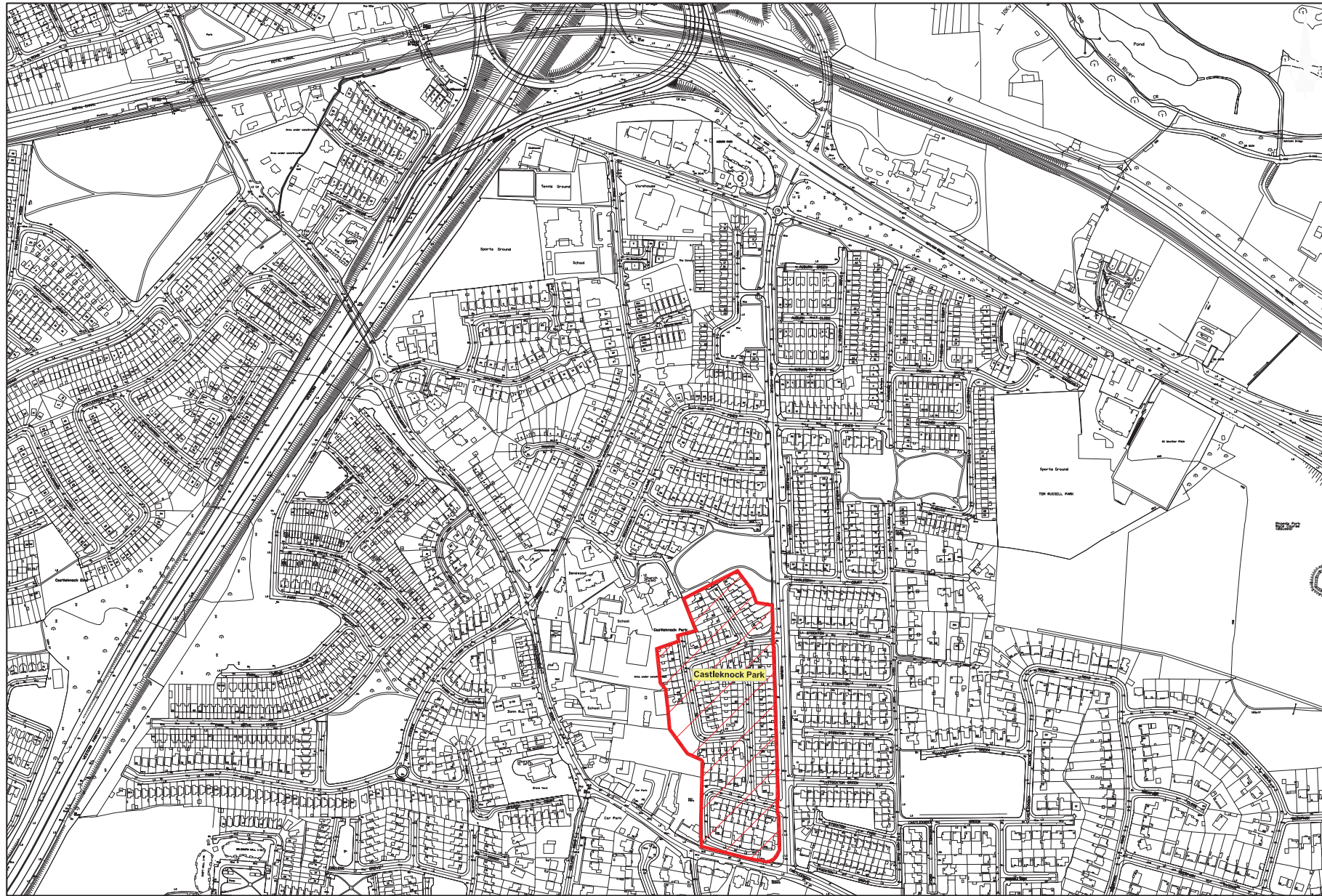




PROPOSED 30km/h SPEED LIMITS - Castleknock Park



TYPICAL SIGNAGE LAYOUT



LEGEND

-  -Proposed Residential and Housing Estate 'Slow Zone' - Speed Limit: 30km/h



No.	DATE	REVISION

SCALE:-	NTS
DATE:-	July 2017
DRAWN:-	COF

PROJECT TITLE:	30km/h SPEED LIMIT
DRAWING TITLE	Castleknock Park
SENIOR ENGINEER:	Colm Keenan

PROJECT ENGINEERS	NaomI Rooney
-------------------	--------------

DRAWING. NO:	30km/h-2017-SPL1-018
--------------	----------------------