

Zoning Objectives

CI - Community Infrastructure	Provide for and protect civic, religious, community, education, health care and social infrastructure
GB - Greenbelt	Protect and provide for a Greenbelt
GE - General Employment	Provide opportunities for general enterprise and employment
HA - High Amenity	Protect and enhance high amenity areas
HT - High Technology	Provide for office, research and development and high technology/high technology manufacturing type employment in a high quality built and landscaped environment
LC - Local Centre	Protect, provide for and/or improve local centre facilities
MC - Major Town Centre	Protect, provide for and/or improve major town centre facilities
OS - Open Space	Preserve and provide for open space and recreational amenities
RA - Residential Area	Provide for new residential communities subject to the provision of the necessary social and physical infrastructure
RB - Rural Business	Provide for and facilitate rural-related business which has a demonstrated need for a rural location
RC - Rural Cluster	Provide for small scale infill development serving local needs while maintaining the rural nature of the cluster
RS - Residential	Provide for residential development and protect and improve residential amenity
RU - Rural	Protect and promote in a balanced way, the development of agriculture and rural-related enterprises, biodiversity, the rural landscape, and the built and cultural heritage
RV - Rural Village	Protect and promote the character of the Rural Village and promote a vibrant community in accordance with an approved Local Area Plan, and the availability of physical and community infrastructure
TC - Town and District Centre	Protect and enhance the special physical and social character of town and district centres and provide and/or improve urban facilities

Specific Objectives

	County Boundary
	Architectural Conservation Area
	Bural Site
	Development Boundary
	Masterplan Area
	Study Area
	Zone of Archaeological Potential
	Indicative Cycle/Pedestrian Route
	Road Proposal
	To Preserve Views
	Local Objective Points
	Protected Structures
	Recorded Monuments
	Coastal Walk
	Provide for residential development at a density per hectare as shown
	Proposed School
	Traveller Accommodation
	Protect & preserve Trees, Woodlands and Hedgerows

Proposed Amendments

PA SH 4.1 Prepare a Masterplan at Mill Pond, Balbriggan MP 4.G and amend Objective BALBRIGGAN 16: Prepare and/or implement the following Masterplans during the lifetime of this Plan:
• Mill Pond, MP 4.G.

PA SH 4.2 Amend zoning from HT - 'High Technology' to GE - 'General Employment' at Harry Reynolds Road, Stephenstown Industrial Estate.

PA SH 4.3 Amend zoning from OS - 'Open Space' to RS - 'Residential' at School Lane, Balrothery.

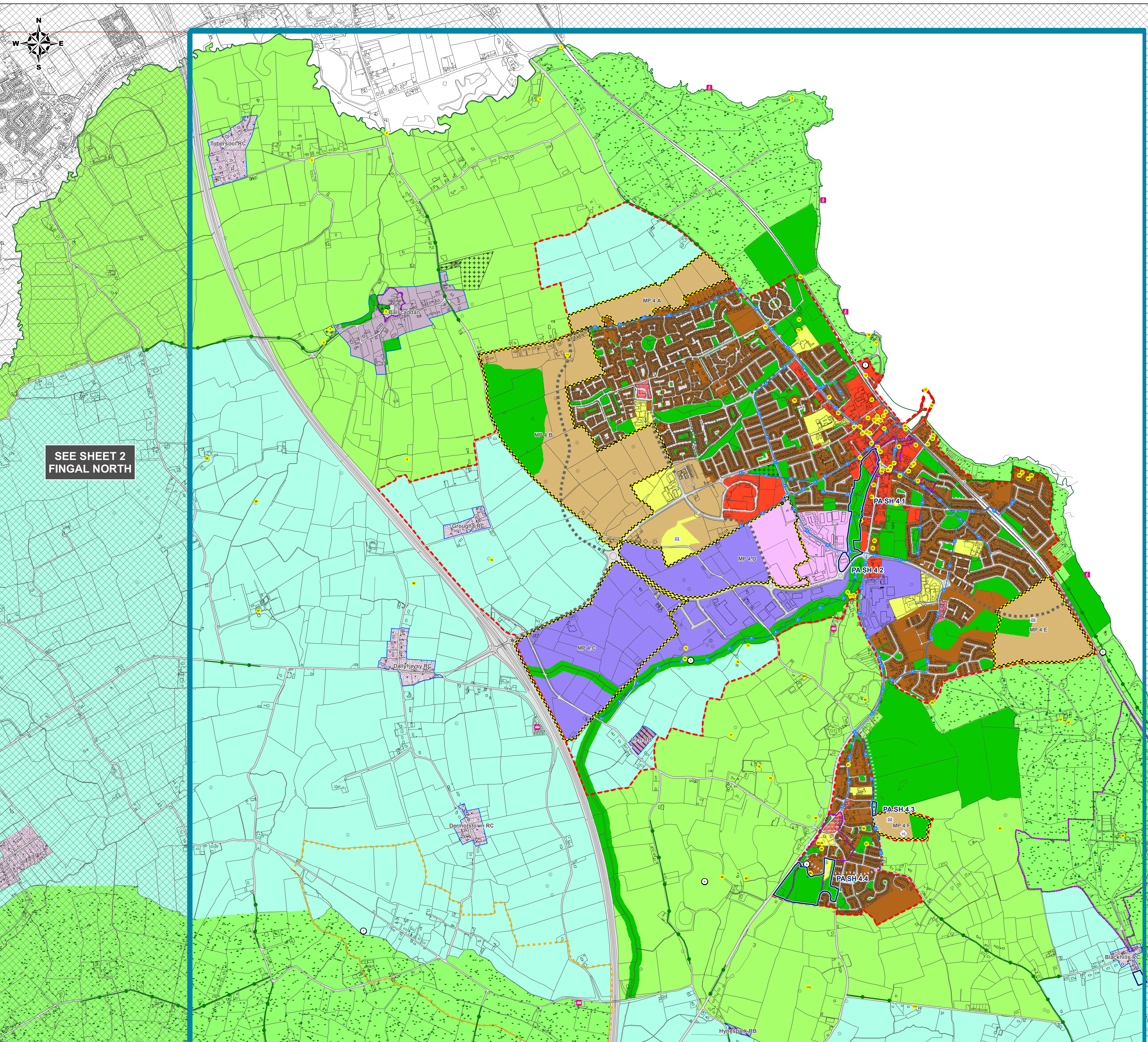
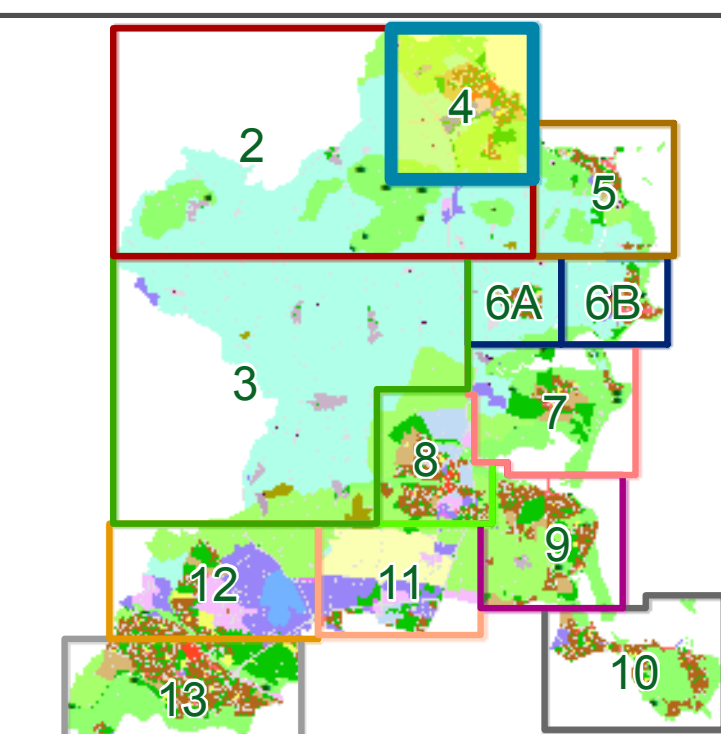
PA SH 4.4 Prepare a Masterplan at Glebe Park, Balrothery MP 4.H and amend Objective BALROTHERY 6: Prepare and implement the following Masterplans during the lifetime of this Plan:
• Glebe Park, Balrothery MP 4.H

PA SH 4.5 Amend zoning from RU - 'Rural' to RC - 'Rural Cluster' at Blackhills RC.

PA SH 4.1 Proposed Amendment

Note:
For further detail please refer to the Draft Written Statement, Draft Written Statement Appendices and the Green Infrastructure Maps
To view details of Recorded Monuments and Places see www.archaeology.ie/publications-forms-legislation/record-of-monuments-and-places

Sheet Index Map



SEE SHEET 2 FINGAL NORTH

SEE SHEET 5 SKERRIES

SEE SHEET 2 FINGAL NORTH

SEE SHEET 2 FINGAL NORTH