

Zoning Objectives

- FP - Food Park Provide for and facilitate the development of a Food Industry Park
- GB - Greenbelt Protect and provide for a Greenbelt
- GE - General Employment Provide opportunities for general enterprise and employment
- HA - High Amenity Protect and enhance high amenity areas
- OS - Open Space Preserve and provide for open space and recreational amenities
- RB - Rural Business Provide for and facilitate rural related business which has a demonstrated need for a rural location
- RC - Rural Cluster Provide for small scale infill development serving local needs while maintaining the rural nature of the cluster
- RU - Rural Protect and promote in a balanced way, the development of agriculture and rural-related enterprise, biodiversity, the rural landscape, and the built and cultural heritage
- RV - Rural Village Protect and promote the character of the Rural Village and promote a vibrant community in accordance with an approved Local Area Plan, and the availability of physical and community infrastructure

Specific Objectives

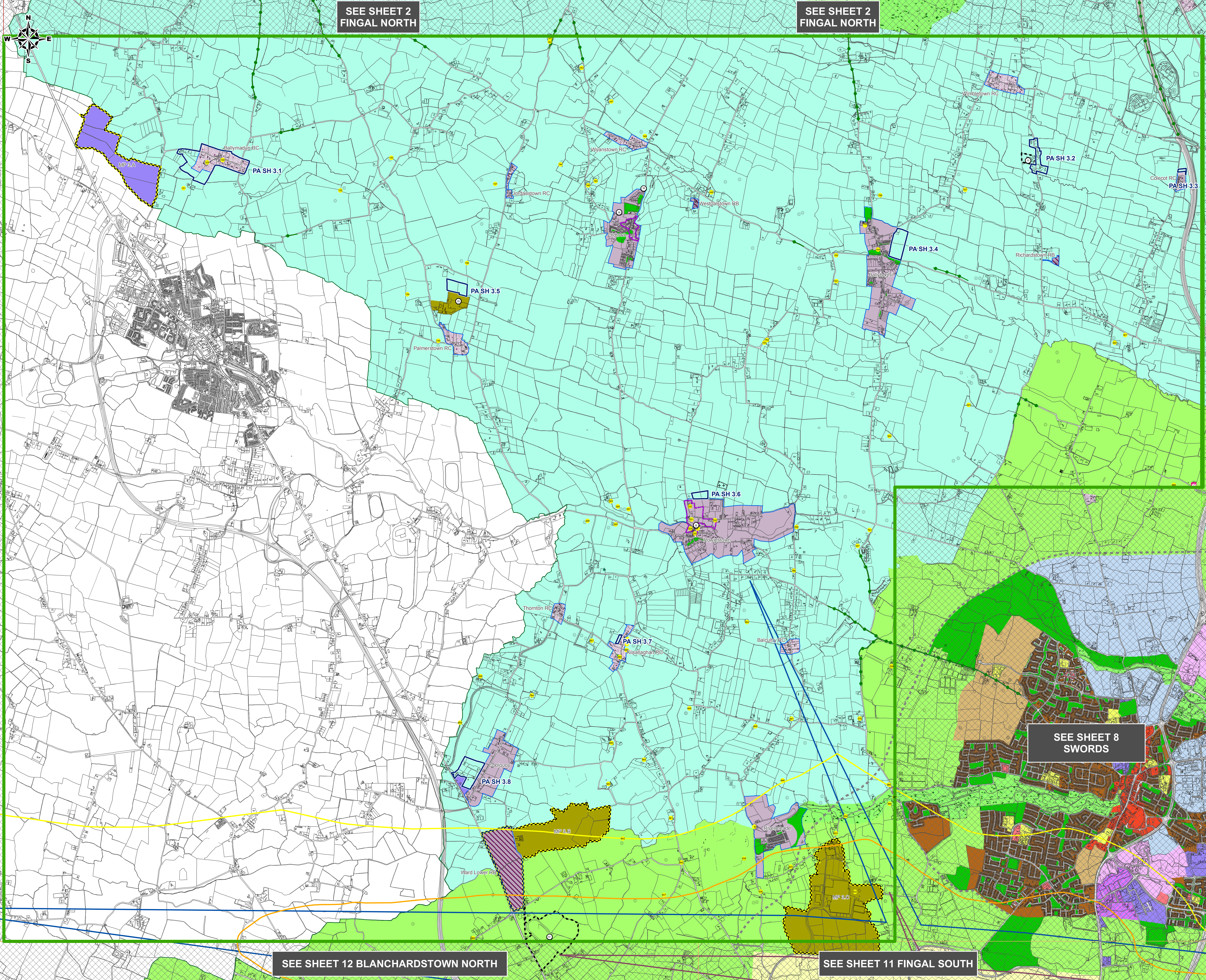
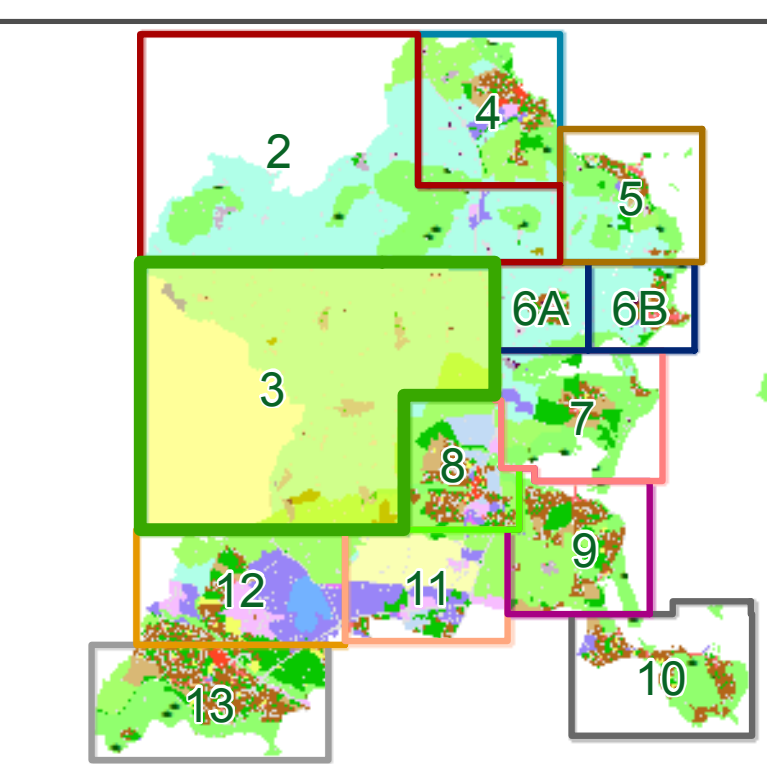
- County Boundary
- Architectural Conservation Area
- Burial Site
- Masterplan Area
- Inner Airport Noise Zone
- Inner Public Safety Zone
- Outer Airport Noise Zone
- Outer Public Safety Zone
- Outer Public Safety Zone
- Site Specific Objective Boundary
- To Preserve Views
- Road Proposal
- Local Objective Points
- Protected Structures
- Recorded Monuments
- Protect & preserve Trees, Woodlands and Hedges
- Traveller Accommodation

Proposed Amendment

- PA SH 3.1** Amend zoning from RC – ‘Rural Cluster’ to RV – ‘Rural Village’ and RU – ‘Rural’ to RV-Rural Village at Ballymadun.
- PA SH 3.2** Amend zoning from RU - ‘Rural’ to RC – ‘Rural Cluster’ at Wimbeltown South.
- PA SH 3.3** Amend zoning from RU - ‘Rural’ to RC – ‘Rural Cluster’ at Colecot RC.
- PA SH 3.4** Amend zoning from RU - ‘Rural’ to RV – ‘Rural Village’ at Ballyboughal.
- PA SH 3.5** Amend zoning from RU - ‘Rural’ to FP – ‘Food Park’ at Sam Dennigan & Co. Palmerstown.
- PA SH 3.6** Amend zoning from RU - ‘Rural’ to RV – ‘Rural Village’ at Rowlestown.
- PA SH 3.7** Amend zoning from RU - ‘Rural’ to RC – ‘Rural Cluster’ at Castlefarm (Kisallaghan) RC.
- PA SH 3.8** Amend zoning from RU - ‘Rural’ to RV – ‘Rural Village’ at Coolquay.

Note:
For further detail please refer to the Draft Written Statement, Draft Written Statement Appendices and the Green Infrastructure Maps
To view details of Recorded Monuments and Places see www.archaeology.ie/publications-forms-legislation/record-of-monuments-and-places

Sheet Index Map



SEE SHEET 2 FINGAL NORTH

SEE SHEET 2 FINGAL NORTH

SEE SHEET 8 SWORDS

SEE SHEET 12 BLANCHARDSTOWN NORTH

SEE SHEET 11 FINGAL SOUTH