

Zoning Objectives

- CI - Community Infrastructure Provide for and protect civic, religious, community, education, health care and social infrastructure
- GB - Greenbelt Protect and provide for a Greenbelt
- GE - General Employment Provide opportunities for general enterprise and employment
- HA - High Amenity Protect and enhance high amenity areas
- HI - Heavy Industry Provide for heavy industry
- HT - High Technology Provide for office, research and development and high technology/high technology manufacturing type employment in a high quality built and landscaped environment
- LC - Local Centre Protect, provide for and/or improve local centre facilities
- OS - Open Space Preserve and provide for open space and recreational amenities
- RA - Residential Area Provide for new residential communities subject to the provision of the necessary social and physical infrastructure
- RS - Residential Provide for residential development and protect and improve residential amenity
- RU - Rural Protect and promote in a balanced way, the development of agriculture and rural-related enterprise, biodiversity, the rural landscape, and the built and cultural heritage
- WD - Warehousing and Distribution Provide for distribution, warehouse, storage and logistics facilities which require good access to a major road network within a good quality environment

Specific Objectives

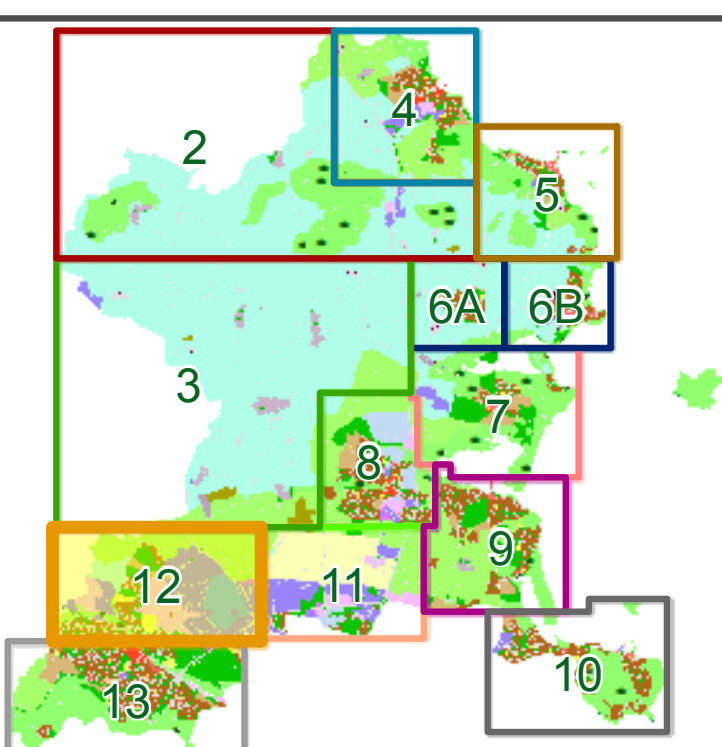
- County Boundary
- Burial Site
- Development Boundary
- Masterplan Area
- Study Area
- Subject to Local Area Plan
- Inner Airport Noise Zone
- Inner Public Safety Zone
- Outer Airport Noise Zone
- Outer Public Safety Zone
- Indicative Cycle/Pedestrian Route
- Quality Bus Corridor
- Road Proposal
- Proposed Indicative Metro Route
- Local Objective Points
- Protected Structures
- Recorded Monuments
- Provide for residential development at a density per hectare as shown
- Metro Stop
- Proposed School
- Sevens Site (Consultation Distances in Metres)
- Traveller Accommodation
- Protect & preserve Trees, Woodlands and Hedgerows

PA SH 12.1 Proposed Amendment

Note:
For further detail please refer to the Draft Written Statement, Draft Written Statement Appendices and the Green Infrastructure Maps

To view details of Recorded Monuments and Places see www.archaeology.ie/publications/forms-legislation/record-of-monuments-and-places

Sheet Index Map

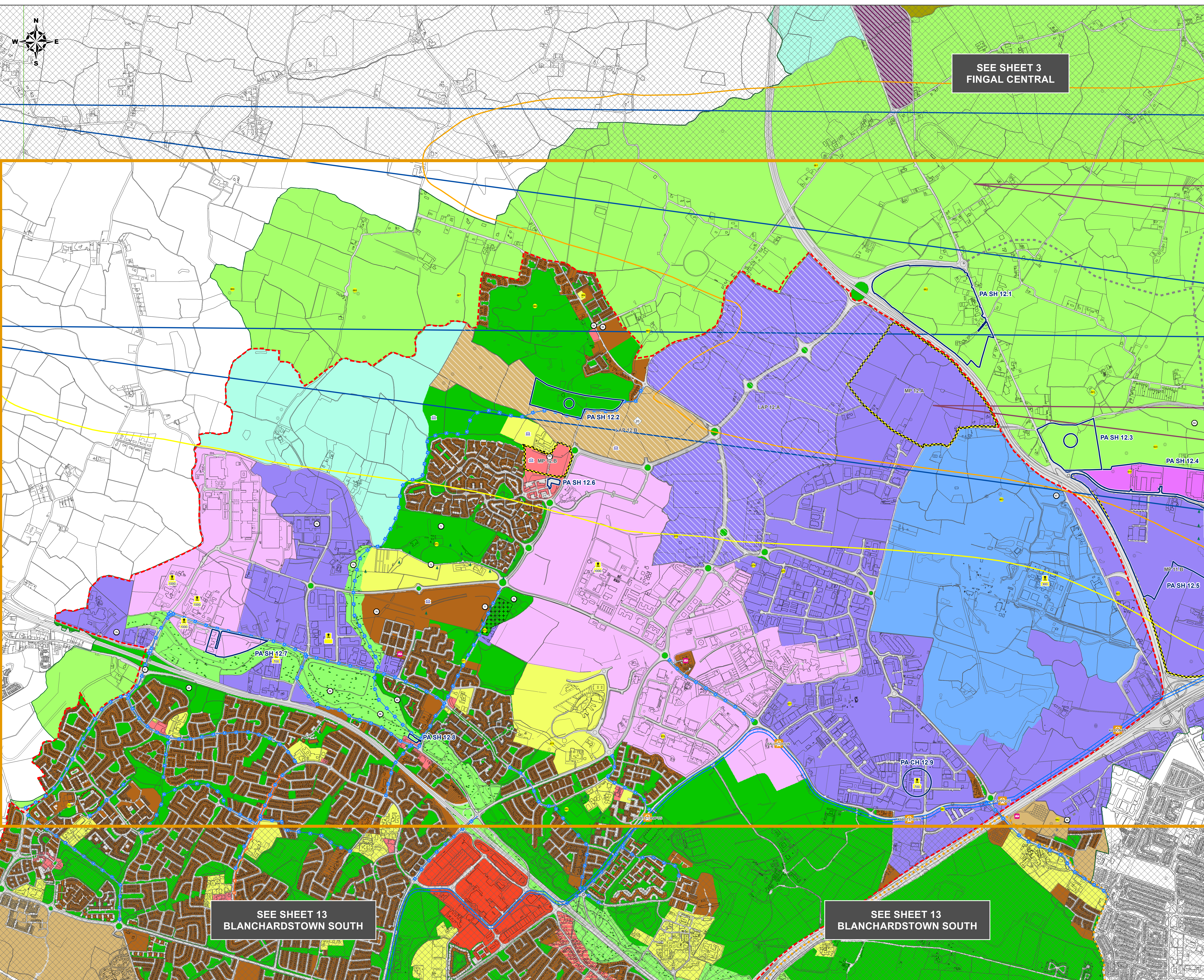


Fingal Development Plan 2017-2023

Be part of it.



Director of Services : Ann Marie Fennelly Date: November 2016
Senior Planner : Matthew McArdle Scale @ A0: 1:9,000
© Ordnance Survey Ireland. All rights reserved.
Licence number 2016/24/CCMA/Fingal/County Council



Proposed Amendments	PA SH 12.3	PA SH 12.7
PA SH 12.1 Amend zoning from GB 'Greenbelt' to GE 'General Employment' at Cherrybowl.	Amend zoning from GB 'Greenbelt' to WD 'Warehousing and Distribution'. Include Local Objective Widen road from St Margarets By Pass at the Klishane junction to provide an extended left turning lane.	Amend zoning from HT 'High Technology' to GE 'General Employment' at Damastown Industrial Park.
PA SH 12.2 Amend zoning from OS 'Open Space' to RA 'Residential' at Hollystown Golf Club. Insert Local Objective: Provide a recreational facility for the Dublin G.A.A. County Board, through the provision by them of a 2.5ha playing pitch and local recreational community facility including a clubhouse, related ancillary facilities and car and cycle parking.	PA SH 12.4 Amend zoning from WD 'Warehousing and Distribution' to GE 'General Employment' at Dublin Airport Logistics Park.	PA SH 12.8 Amend zoning from HA 'High Amenity' to LC 'Local Centre' in Mulhuddart Village.
	PA SH 12.5 Omit Dublin Airport Logistics lands from Masterplan 11.B and revise boundaries.	PA CH 12.9 Remove Chemco Ireland Ballycoolin from Table 12.13 Chapter 12 (from chapter 12 of Material Alterations document)
	PA SH 12.6 Zone lands LC 'Local Centre' at LIDL, Tyrellstown.	