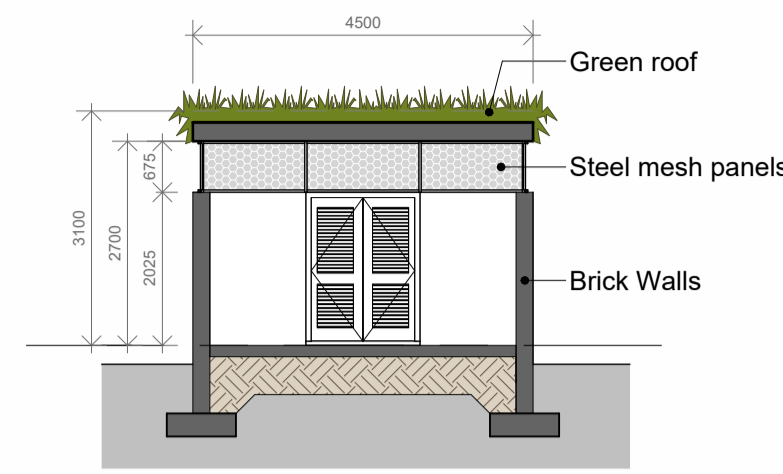
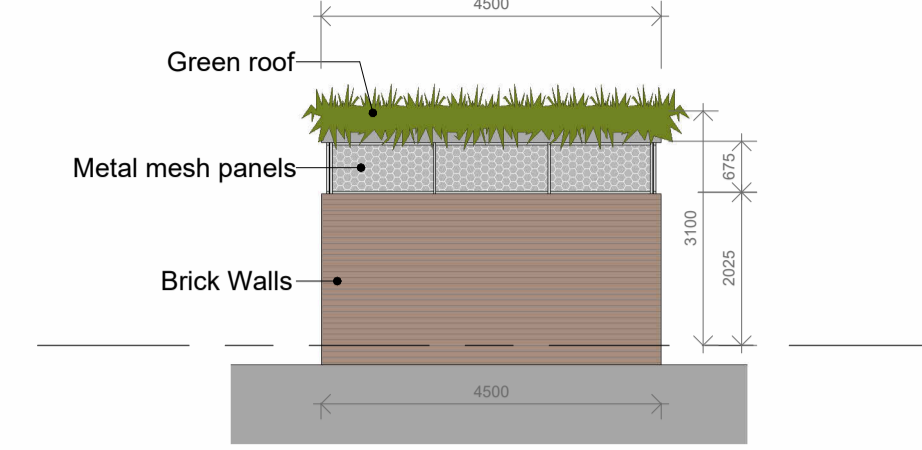


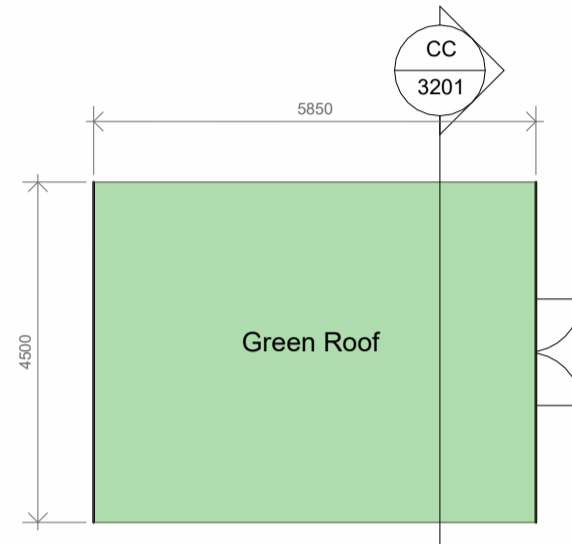
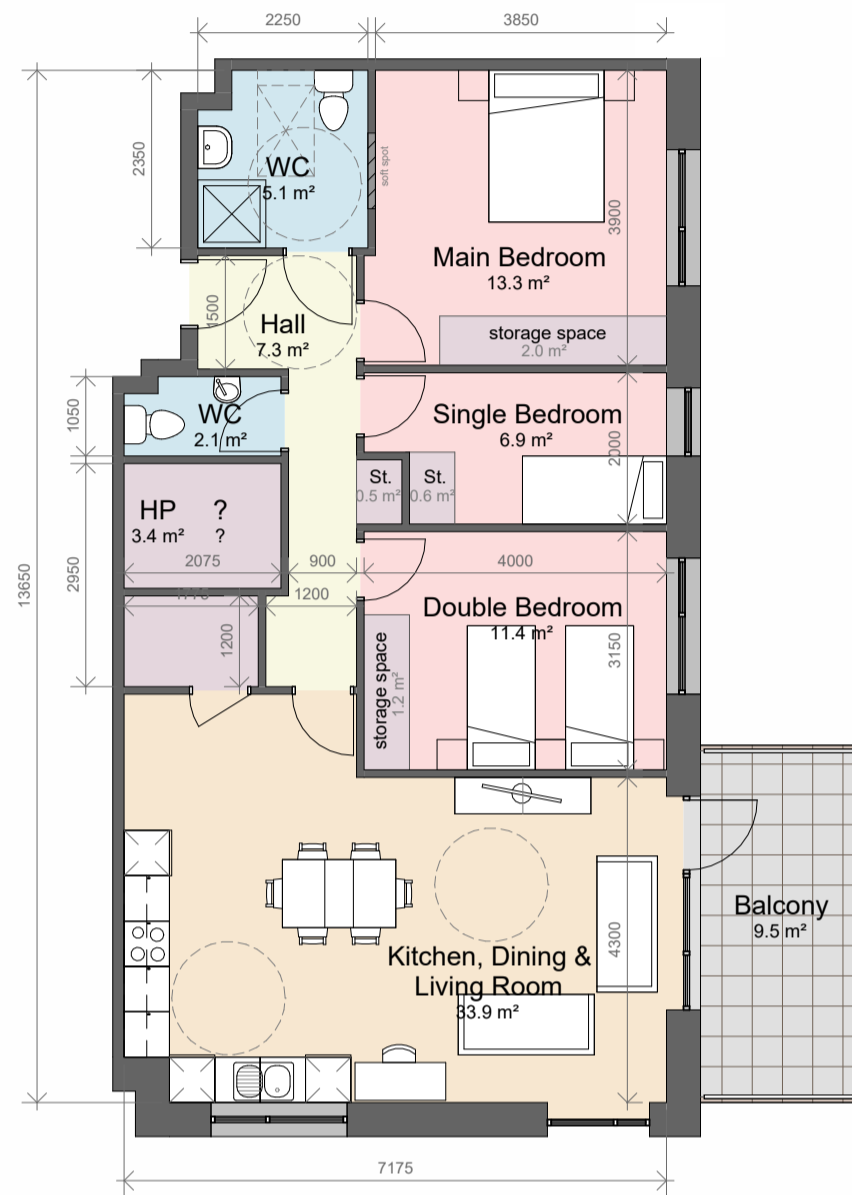
**BIN STORES - TYPICAL FLOOR PLAN**  
1 : 100 @ A1



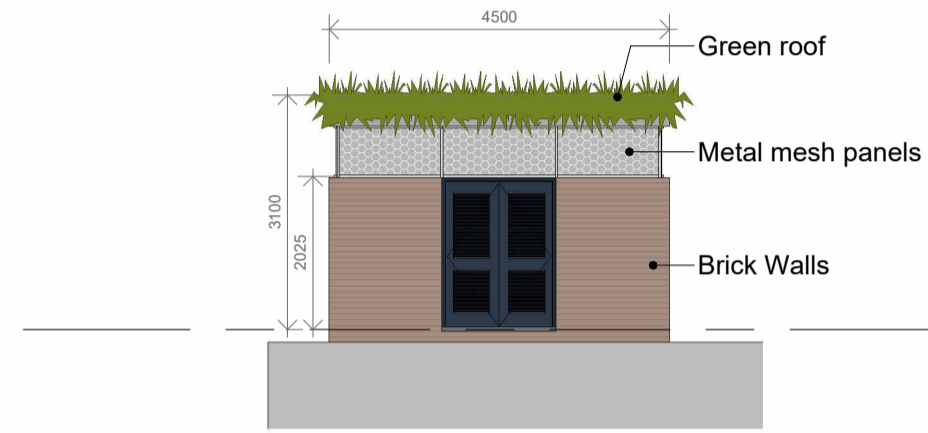
**BIN STORES - TYPICAL SECTION CC**  
1 : 100 @ A1



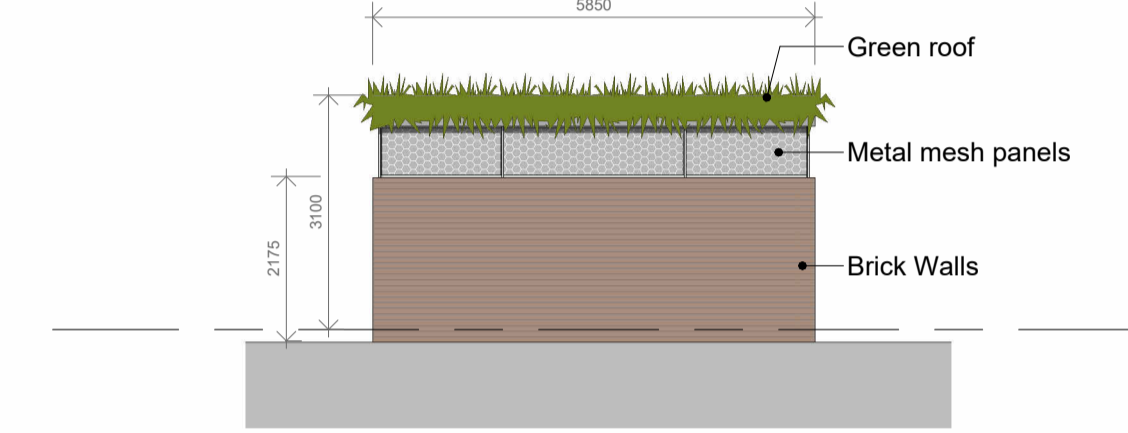
**BIN STORES - TYPICAL BACK ELEVATIONS**  
1 : 100 @ A1



**BIN STORES - TYPICAL ROOF PLAN**  
1 : 100 @ A1



**BIN STORES - TYPICAL FRONT ELEVATIONS**  
1 : 100 @ A1



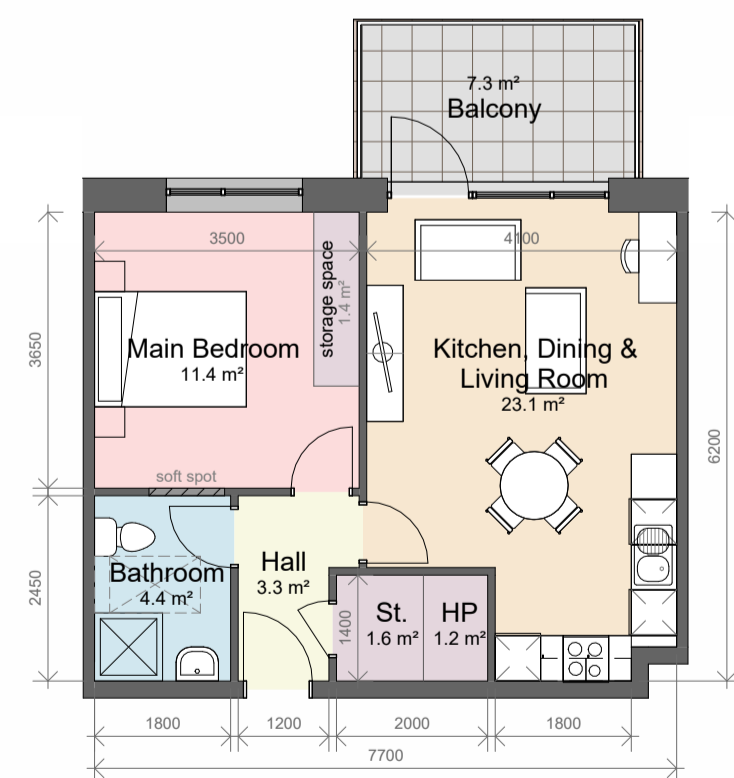
**BIN STORES - TYPICAL SIDE ELEVATIONS**  
1 : 100 @ A1

Relevant Area	Proposed	Target	Comparison
Total Floor Area:	93.3m <sup>2</sup>	90.0m <sup>2</sup>	103.7%
Aggr. Living:	34.0m <sup>2</sup>	34.0m <sup>2</sup>	100.0%
Aggr. Bedrooms:	31.5m <sup>2</sup>	31.5m <sup>2</sup>	100.0%
Storage:	9.0m <sup>2</sup>	9.0m <sup>2</sup>	100.0%
Private Open Space:	9.5m <sup>2</sup>	9.0m <sup>2</sup>	105.6%

- Key:
- Bedrooms
  - Circulation (Private)
  - Living Areas
  - Private Open Space
  - Sanitary Facilities
  - Storage

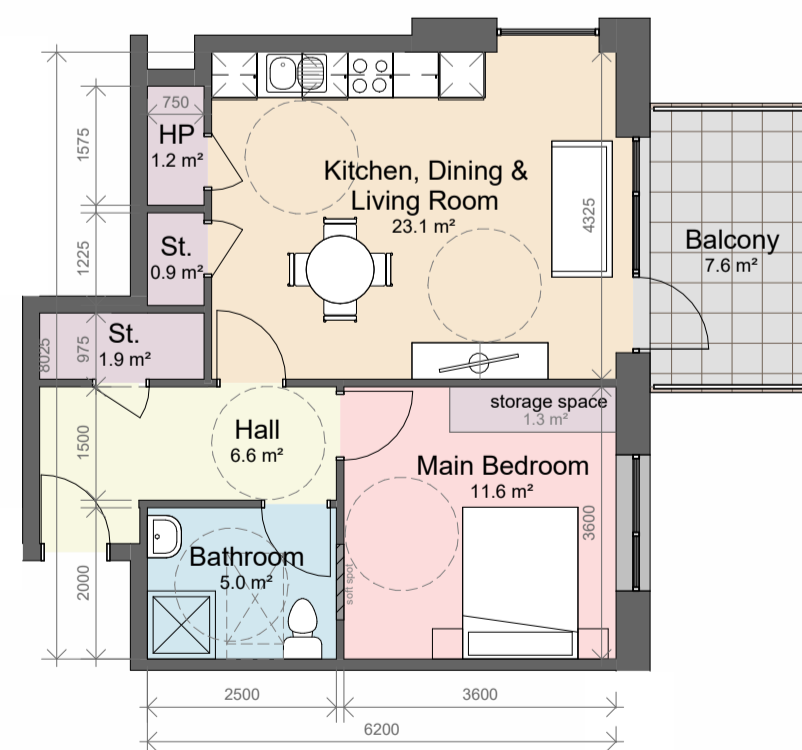
Please refer to drawings no. 22-046-P-3101 to 3105 (Apartment Block Site & Floor Plans) for details of bin store & apartment type locations and orientations.

**APARTMENT TYPE G - 3B5P1S (UD)**  
1 : 100 @ A1



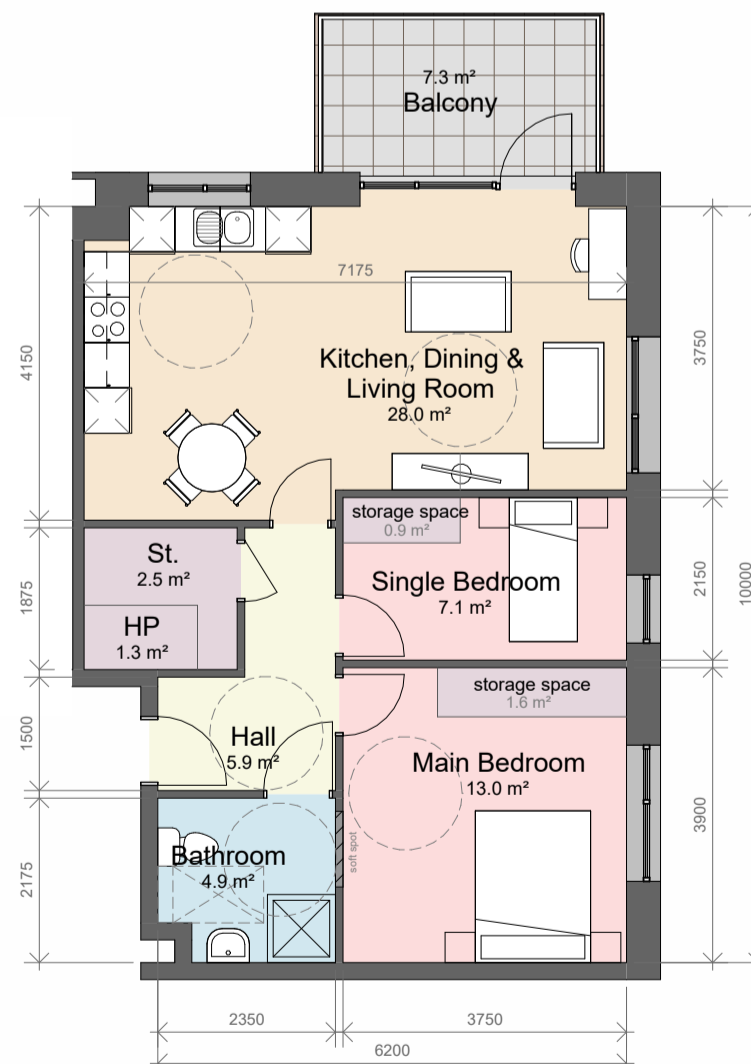
Relevant Area	Proposed	Target	Comparison
Total Floor Area:	47.5m <sup>2</sup>	45.0m <sup>2</sup>	105.6%
Aggr. Living:	23.1m <sup>2</sup>	23.0m <sup>2</sup>	100.4%
Aggr. Bedrooms:	11.4m <sup>2</sup>	11.4m <sup>2</sup>	100.0%
Storage:	3.0m <sup>2</sup>	3.0m <sup>2</sup>	100.0%
Private Open Space:	7.3m <sup>2</sup>	5.0m <sup>2</sup>	146.0%

**APARTMENT TYPE D - 1B2P1S**  
1 : 100 @ A1



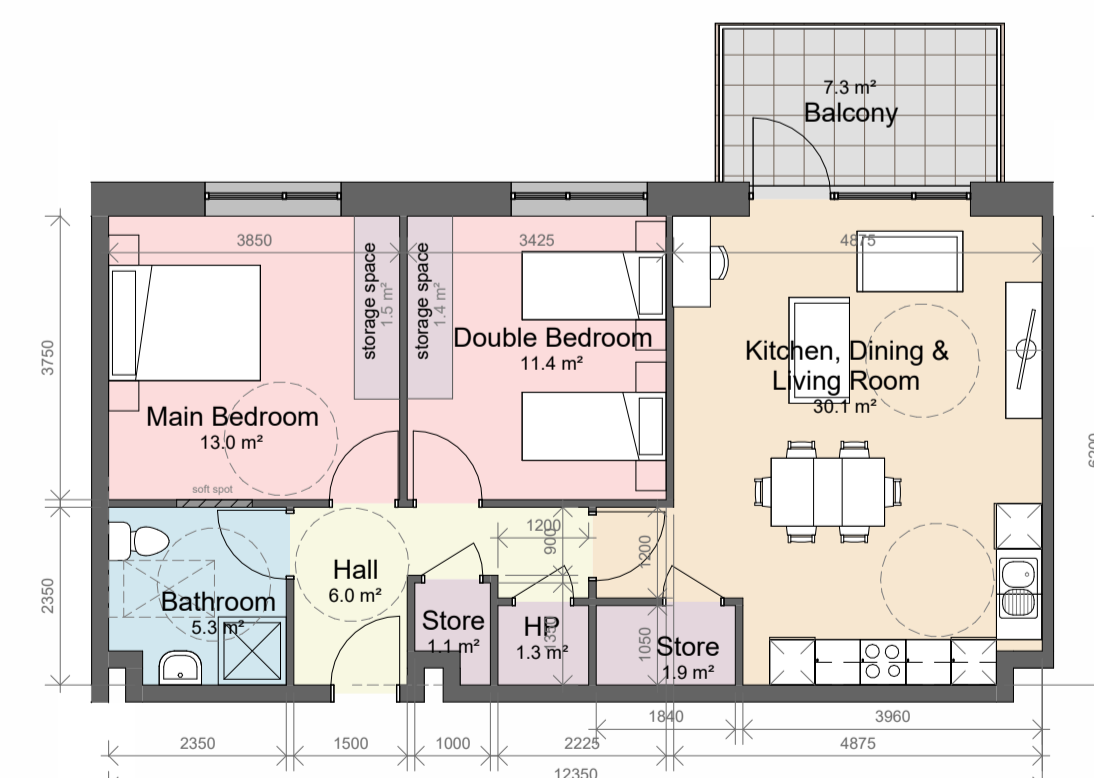
Relevant Area	Proposed	Target	Comparison
Total Floor Area:	53.7m <sup>2</sup>	45.0m <sup>2</sup>	119.3%
Aggr. Living:	23.1m <sup>2</sup>	23.0m <sup>2</sup>	100.4%
Aggr. Bedrooms:	11.6m <sup>2</sup>	11.4m <sup>2</sup>	101.8%
Storage:	4.1m <sup>2</sup>	3.0m <sup>2</sup>	103.7%
Private Open Space:	7.6m <sup>2</sup>	5.0m <sup>2</sup>	152.0%

**APARTMENT TYPE D1 - 1B2P1S (UD)**  
1 : 100 @ A1



Relevant Area	Proposed	Target	Comparison
Total Floor Area:	67.5m <sup>2</sup>	63.0m <sup>2</sup>	107.1%
Aggr. Living:	28.0m <sup>2</sup>	28.0m <sup>2</sup>	100.0%
Aggr. Bedrooms:	20.1m <sup>2</sup>	20.1m <sup>2</sup>	100.0%
Storage:	5.0m <sup>2</sup>	5.0m <sup>2</sup>	100.0%
Private Open Space:	7.3m <sup>2</sup>	6.0m <sup>2</sup>	121.6%

**APARTMENT TYPE E - 2B3P1S (UD)**  
1 : 100 @ A1



Relevant Area	Proposed	Target	Comparison
Total Floor Area:	75.8m <sup>2</sup>	73.0m <sup>2</sup>	103.8%
Aggr. Living:	30.1m <sup>2</sup>	30.0m <sup>2</sup>	100.3%
Aggr. Bedrooms:	24.4m <sup>2</sup>	24.4m <sup>2</sup>	100.0%
Storage:	6.0m <sup>2</sup>	6.0m <sup>2</sup>	100.0%
Private Open Space:	7.3m <sup>2</sup>	7.0m <sup>2</sup>	104.3%

**APARTMENT TYPE F - 2B4P1S (UD)**  
1 : 100 @ A1

**Comhairle Contae**  
**Fhine Gall**  
Fingal County Council  
County Hall, Main Street, Swords, Co Dublin.  
County Architect: Fionnuala May  
Tel: 01 890 5050  
architects@fingal.ie

**Fingal County Council**  
**Housing Department**

**Proposed Housing**  
**Development at New**  
**Road, Donabate**

**APARTMENT TYPES - GA**  
**FLOOR PLANS & BIN**  
**STORES DETAILS**

Project number **22-046**

Project stage **P**

Date **2024-04-04**

Drawn by **AP**

Project Architect **AP**

Scale **1 : 100**

Drawing number **22-046 - P - 3201**

Revision number **V1**