

- General Notes:
1. USE FIGURED DIMENSIONS ONLY - DO NOT SCALE.
 2. ALL DRAWINGS TO BE READ IN CONJUNCTION WITH CIVIL, STRUCTURAL, MECHANICAL & ELECTRICAL, FIRE CONSULTANT ENGINEERS DRAWINGS & SPECIFICATIONS, AS WELL AS DAC DOCUMENTATION.
 3. ANY DISCREPANCIES TO BE BROUGHT TO ARCHITECTS ATTENTION.
 4. INFORMATION EXTRACTED FROM BIM MODELS I.E. PRINTED FORMAT TO TAKE PRECEDENCE OVER BIM MODEL.
 5. GROUND LEVELS VARY THROUGHOUT EACH BLOCK TYPE. REFER TO SITE PLAN 22-046-PP-0003 FOR SPECIFIC DETAILS ON GROUND LEVELS.



Block 1 Type G Front Elevation
1 : 200



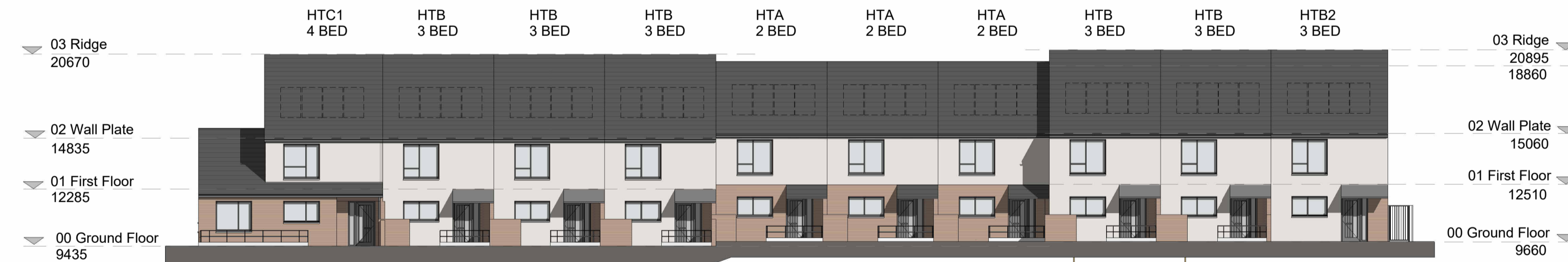
B15 BT E Front Elevation
1 : 200



Block 6 Type E Front Elevation
1 : 200



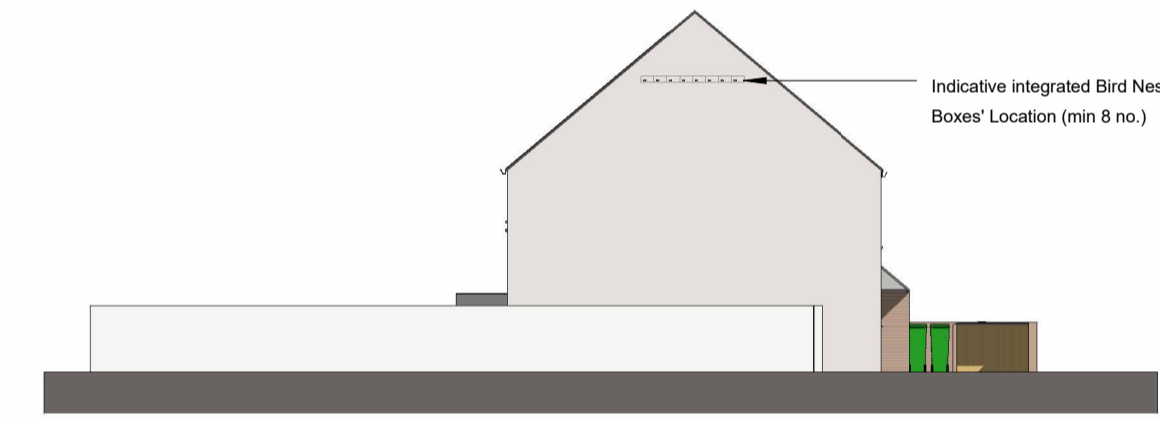
Block 8 Type F Front Elevation
1 : 200



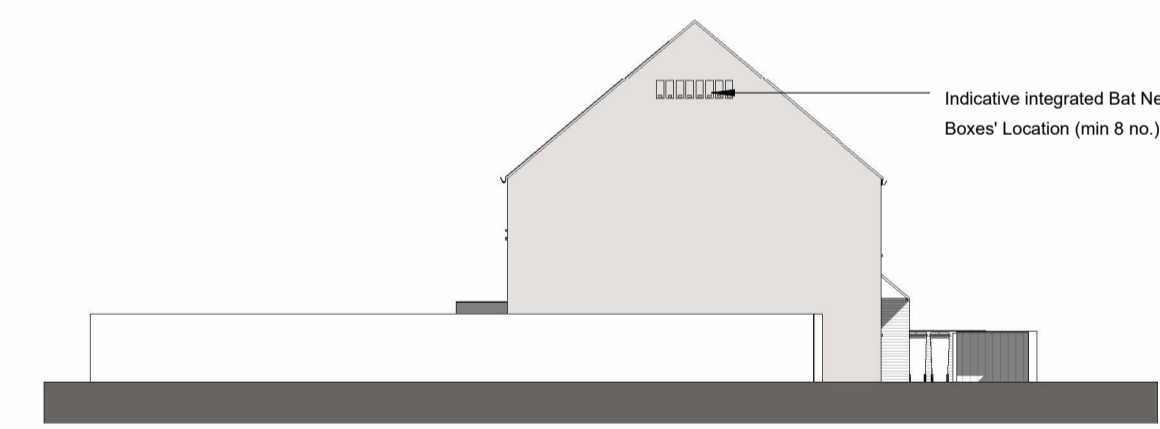
Block 11 Type F Front Elevation
1 : 200



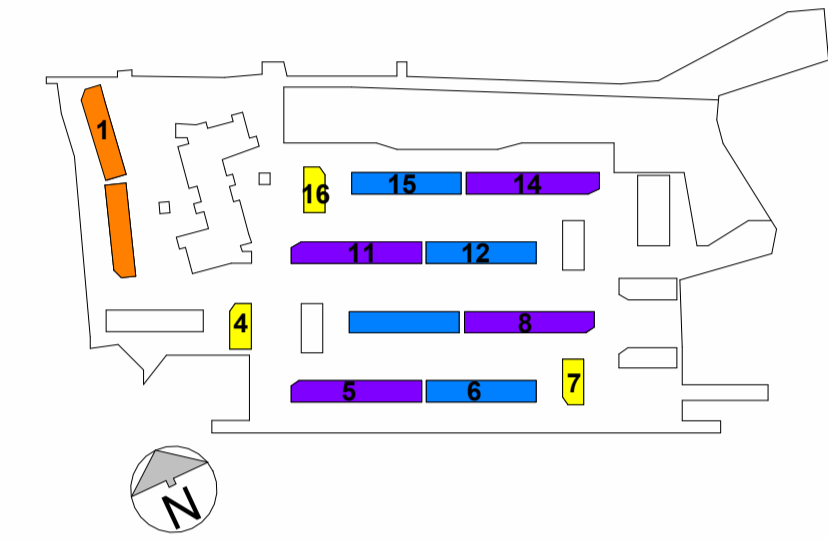
Block 12 Type E Front Elevation
1 : 200



Blocks 5,14,16 - Indicative Bird Nesting Box Locations
1 : 200



Block 7 - Indicative Bat Nesting Box Locations
1 : 200



No.	Revision Description	Date

Comhairle Contae Fine Gall
Fingal County Council

Architects Department
County Hall, Main Street, Swords, Co Dublin.

County Architect: Fionnuala May
Dep. Arch. B. Arch. Sc. MUBC MRIAI

Tel: 01 890 5050
architects@fingal.ie

Client

Fingal County Council Housing Department

Project Title

Proposed New Residential Development at New Road, Donabate

Blocks 1, 6, 8, 11, 12 & 15 - Stepped Elevations & Proposed Bat & Bird Nesting Locations

Project number	22-046
Project stage	P
Date	04-04-2024
Drawn by	SB
Project Architect	AP
Scale @ A1	1 : 200
Drawing number	Revision number

22-046 - P - 2701

NOTE:
THIS DRAWING ONLY REFLECTS BLOCKS THAT INCLUDE STEPS BETWEEN HOUSES. LEVELS VARY THROUGHOUT FOR EACH BLOCK. REFER TO SITE DEVELOPMENT PLAN FOR ALL BLOCK'S LEVELS, SOME OF WHICH DO NOT INCLUDE ANY STEPS BETWEEN HOUSES.

SEE HOUSE BLOCK TYPE TYPICAL ELEVATIONS FOR ALL BLOCK TYPE ELEVATIONS.