

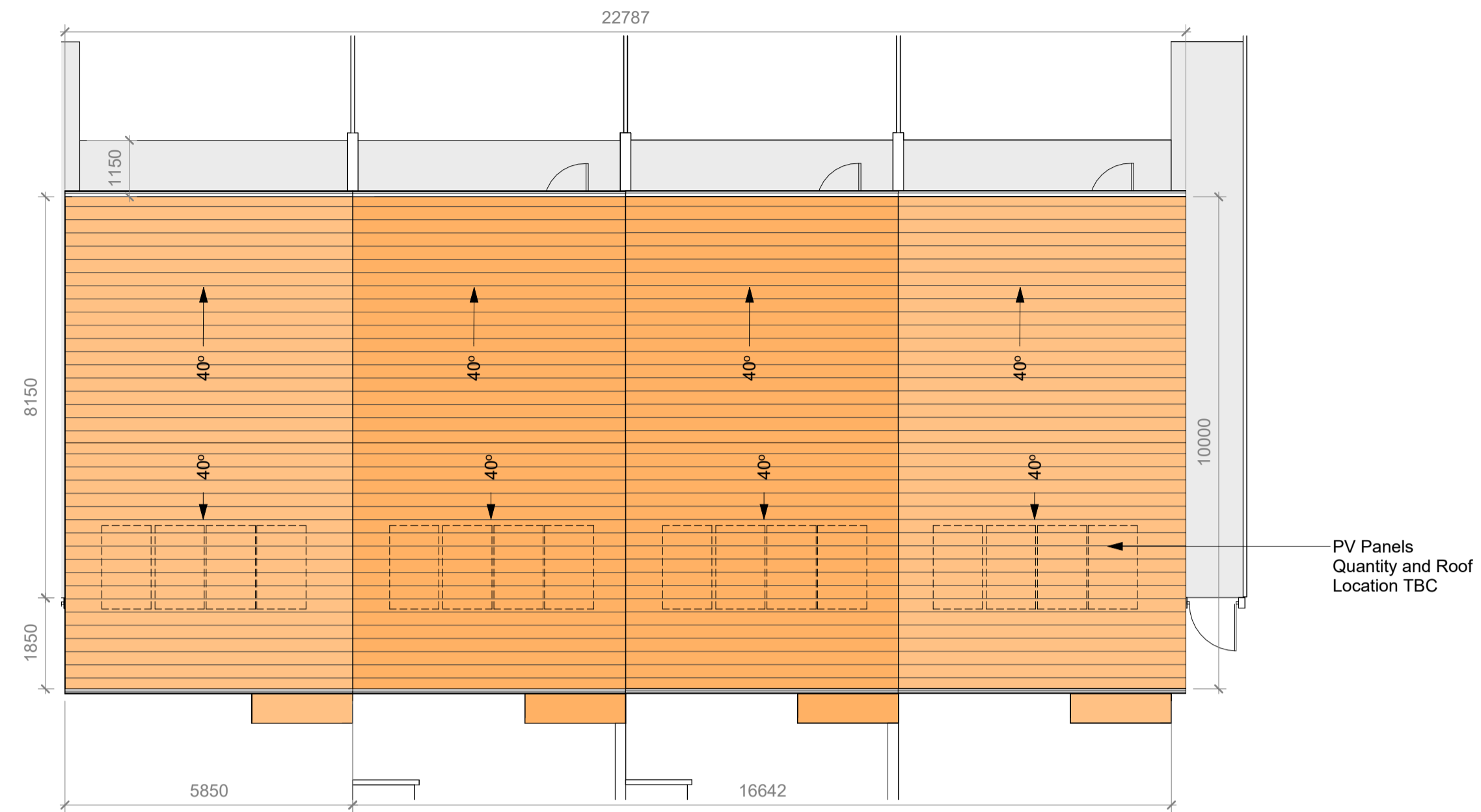
- General Notes:
1. USE FIGURED DIMENSIONS ONLY - DO NOT SCALE.
 2. ALL DRAWINGS TO BE READ IN CONJUNCTION WITH CIVIL, STRUCTURAL, MECHANICAL & ELECTRICAL, FIRE CONSULTANT ENGINEERS DRAWINGS & SPECIFICATIONS, AS WELL AS DAC DOCUMENTATION.
 3. ANY DISCREPANCIES TO BE BROUGHT TO ARCHITECTS ATTENTION.
 4. INFORMATION EXTRACTED FROM BIM MODELS I.E. PRINTED FORMAT TO TAKE PRECEDENCE OVER BIM MODEL.
 5. GROUND LEVELS VARY THROUGHOUT EACH BLOCK TYPE. REFER TO SITE PLAN 22-046-PP-0003 FOR SPECIFIC DETAILS ON GROUND LEVELS.

House Block Unit Type Summary

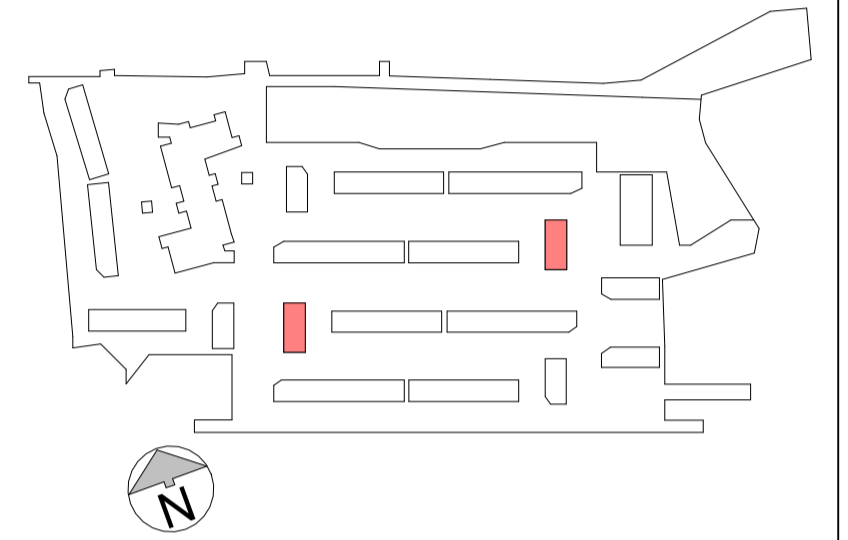
- House Type B:3 Bedroom
4 Person, 2 Storey Terraced House, Mid Unit
- House Type B1: 3 Bedroom
4 Person, 2 Storey Terraced House, End Unit
- House Type B2: 3 Bedroom
5 Person, 2 Storey Terraced House, End Unit

Please refer to drawing House Type GA Floor Plans (Drawing Series 1000) for specific unit details

Total No. of Houses in Block C : 4



Block Type C - Typical Roof Plan
1 : 100



No.	Revision Description	Date

No.	Revision Description	Date

Comhairle Contae Fine Gall
Fingal County Council

Architects Department
County Hall, Main Street, Swords, Co Dublin.

County Architect: Fionnuala May
Dep. Arch. B. Arch. Sc. MUBC MRAI

Tel: 01 890 5050
architects@fingal.ie

Client

Fingal County Council Housing Department

Project Title

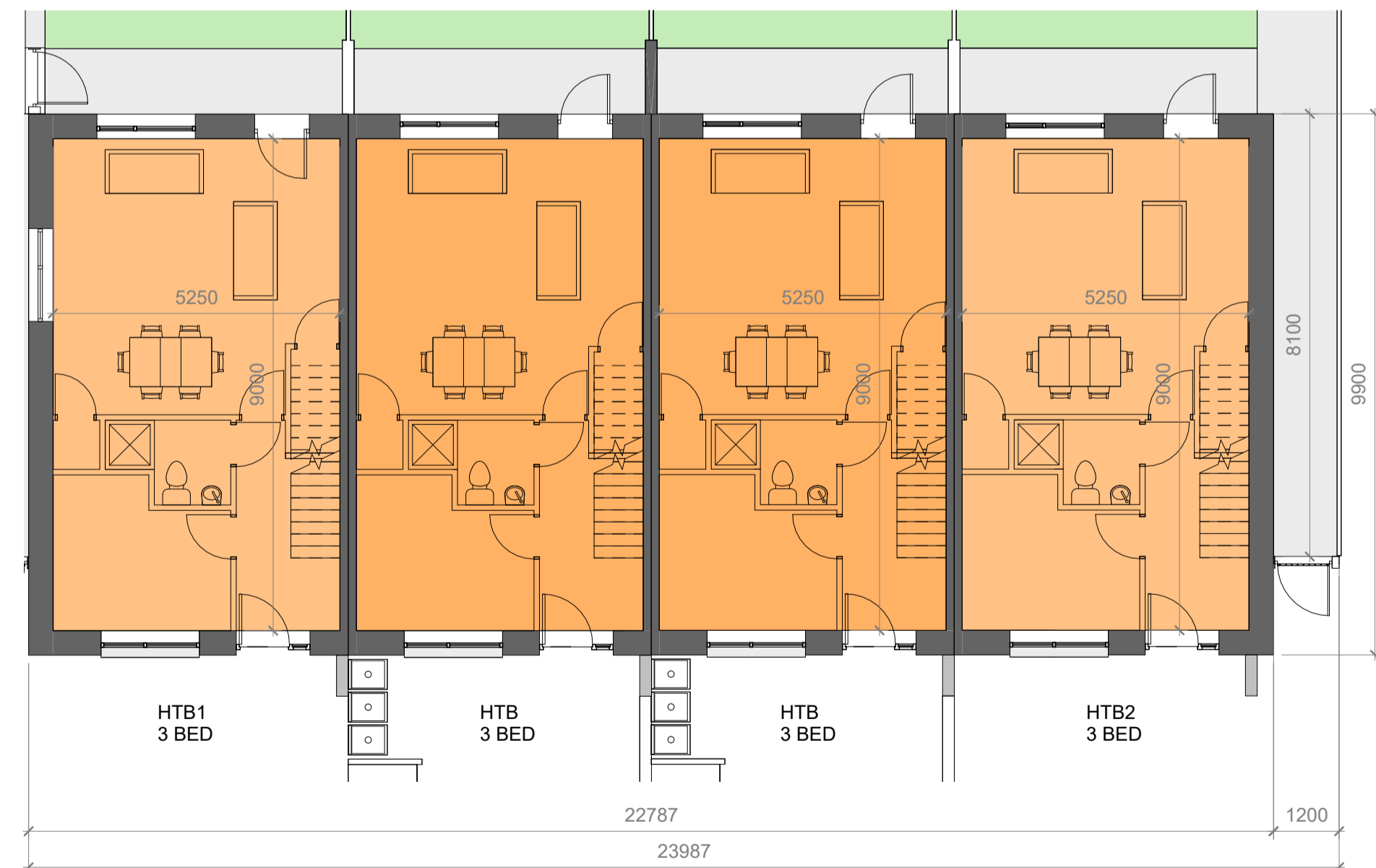
Proposed New Residential Development at New Road, Donabate

Drawing Title

BLOCK TYPE C (10 & 13) - TYPICAL GA FLOOR & ROOF PLANS

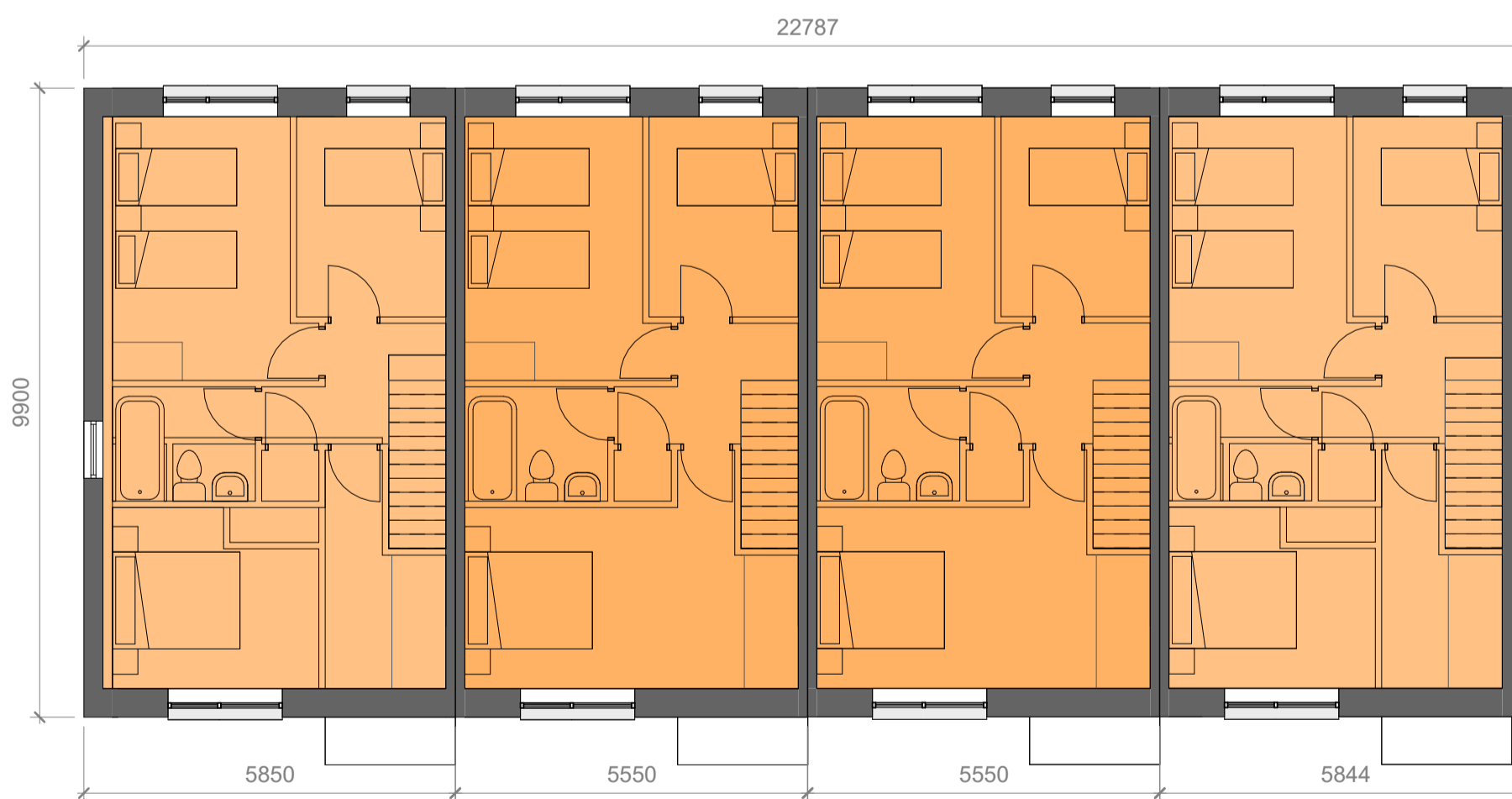
Project number	22-046
Project stage	P
Date	04-04-2024
Drawn by	SB
Project Architect	AP
Scale @ A1	1 : 100
Drawing number	Revision number

22-046 - P - 2201



NOTE: REFER TO HOUSE TYPE DRAWINGS & SITE DEVELOPMENT PLAN FOR DETAILS ON FRONT PRIVACY STRIP AND DRIVEWAY LAYOUTS

Block Type C - Ground Floor Plan
1 : 100



Block Type C - Typical First Floor Plan
1 : 100