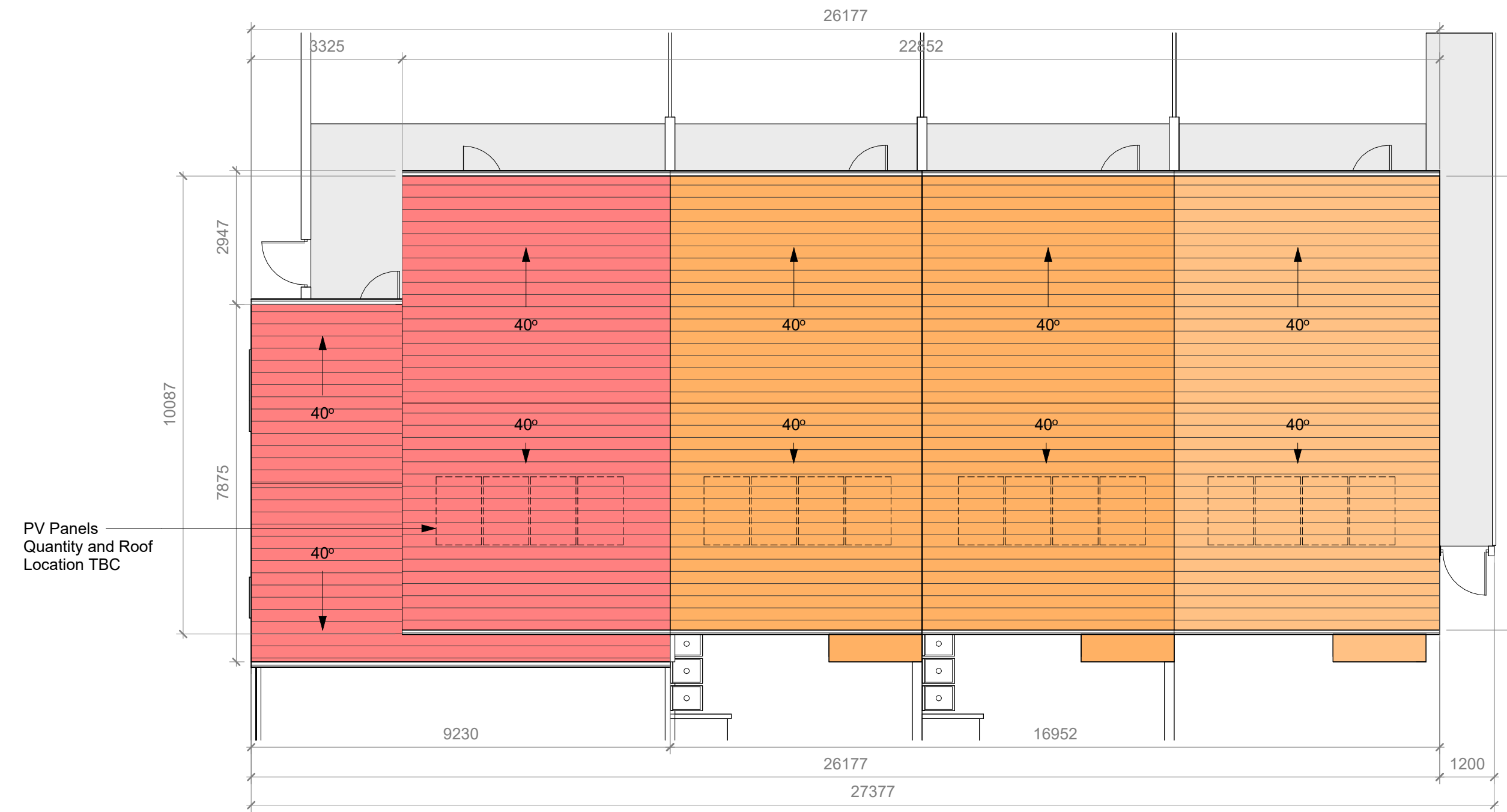


House Block Unit Type Summary

- House Type B:3 Bedroom
5 Person, 2 Storey Terraced House, Mid Unit
- House Type B2: 3 Bedroom
5 Person, 2 Storey Terraced House, End Unit
- House Type C1: 4 Bedroom
7 Person, 2 Storey End of Terraced House

Please refer to drawing House Type GA Floor Plans (Drawing Series 1000) for specific details

Total No. of Houses in Block B : 4



Block Type B - Typical Roof Plan
1 : 100

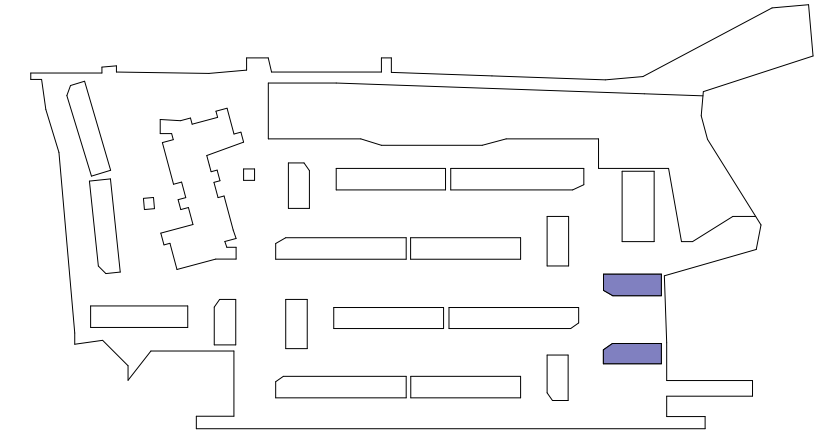


Block Type B - Typical Ground Floor Plan
1 : 100



Block Type B - Typical First Floor Plan
1 : 100

- General Notes:
1. USE FIGURED DIMENSIONS ONLY - DO NOT SCALE.
 2. ALL DRAWINGS TO BE READ IN CONJUNCTION WITH CIVIL, STRUCTURAL, MECHANICAL & ELECTRICAL, FIRE CONSULTANT ENGINEERS DRAWINGS & SPECIFICATIONS. AS WELL AS DAC DOCUMENTATION.
 3. ANY DISCREPANCIES TO BE BROUGHT TO ARCHITECTS ATTENTION.
 4. INFORMATION EXTRACTED FROM BIM MODELS I.E. PRINTED FORMAT TO TAKE PRECEDENCE OVER BIM MODEL.
 5. GROUND LEVELS VARY THROUGHOUT EACH BLOCK TYPE, REFER TO SITE PLAN 22-046-PP-0003 FOR SPECIFIC DETAILS ON GROUND LEVELS.



No.	Revision Description	Date

No.	Revision Description	Date

Comhairle Contae Fhine Gall
Fingal County Council

Architects Department
County Hall, Main Street, Swords, Co Dublin.

County Architect: Fionnuala May
Dip. Arch. B. Arch. Sc. MUBC MRIAI

Tel: 01 890 5050
architects@fingal.ie

Client

Fingal County Council Housing Department

Project Title

Proposed New Residential Development at New Road, Donabate

Drawing Title

BLOCK TYPE B (17 & 18) - TYPICAL GA FLOOR & ROOF PLANS

Project number	22-046
Project stage	P
Date	04-04-2024
Drawn by	SB
Project Architect	AP
Scale @ A1	1 : 100
Drawing number	Revision number

22-046 - P - 2101