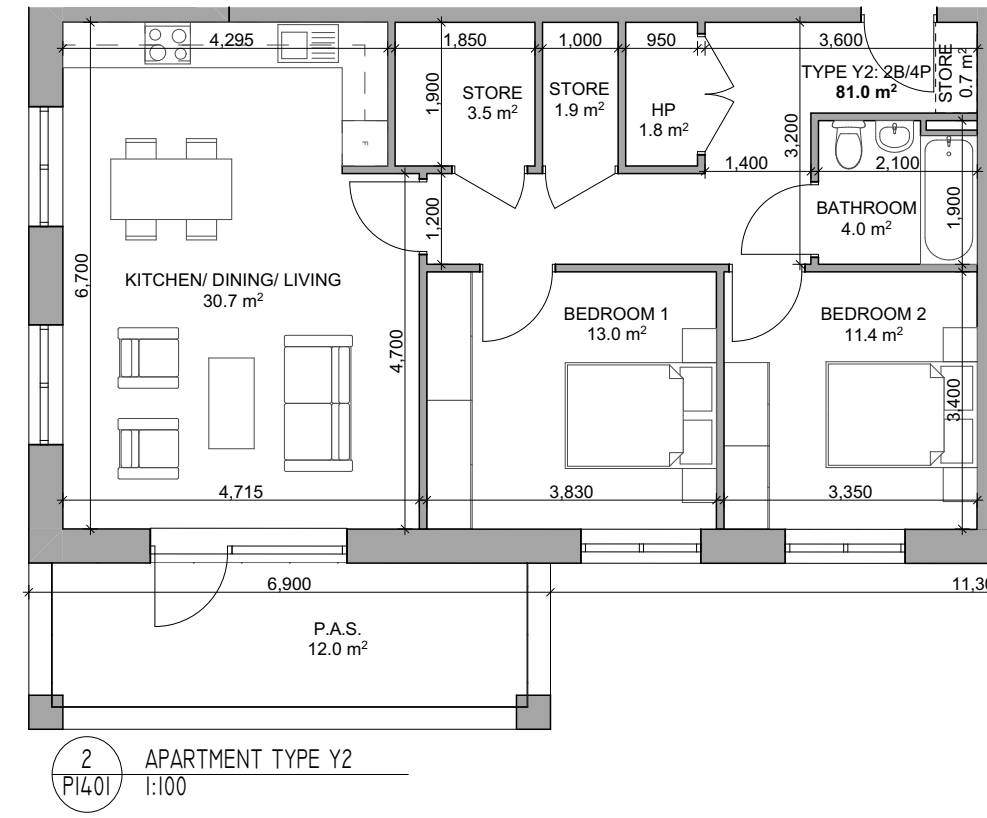


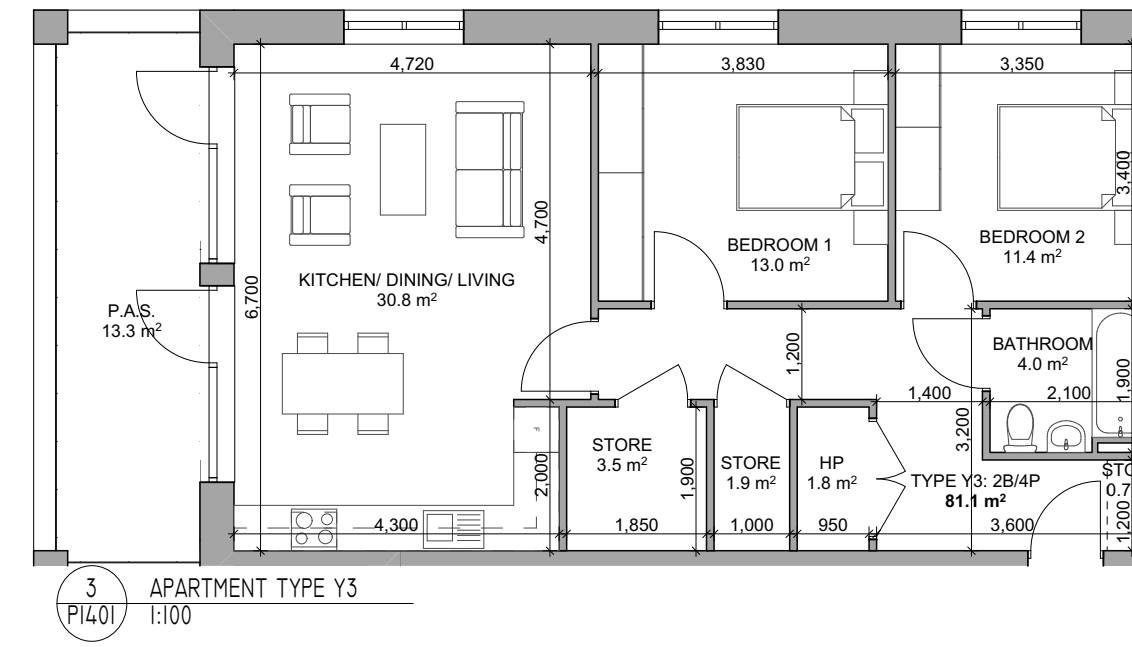
Y1: 2 BED 3 PERSON UD/AF APARTMENT

MTN APARTMENT TYPE Y1			
ZONE NAME	ACTUAL AREA (SqM)	EQUIVALENT FCC GUIDELINES (SqM)	COMPARISON OF FLOOR AREA (%)
TOTAL STORAGE AREA			
STORE	5.5	5	109.0
TOTAL LIVING/KITCHEN/DINING AREA			
K/L/D	28.5	28	101.7
TOTAL BEDROOM AREA			
AGG BEDROOM	24.3	20.1	121.1
BEDROOM 1	13.7	11.4	120.0
BEDROOM 2	10.6	7.1	149.8
P.A.S.			
P.A.S.	10.5	6	175.8
GROSS INTERNAL AREA			
GROSS AREA	76.3	63	121.1



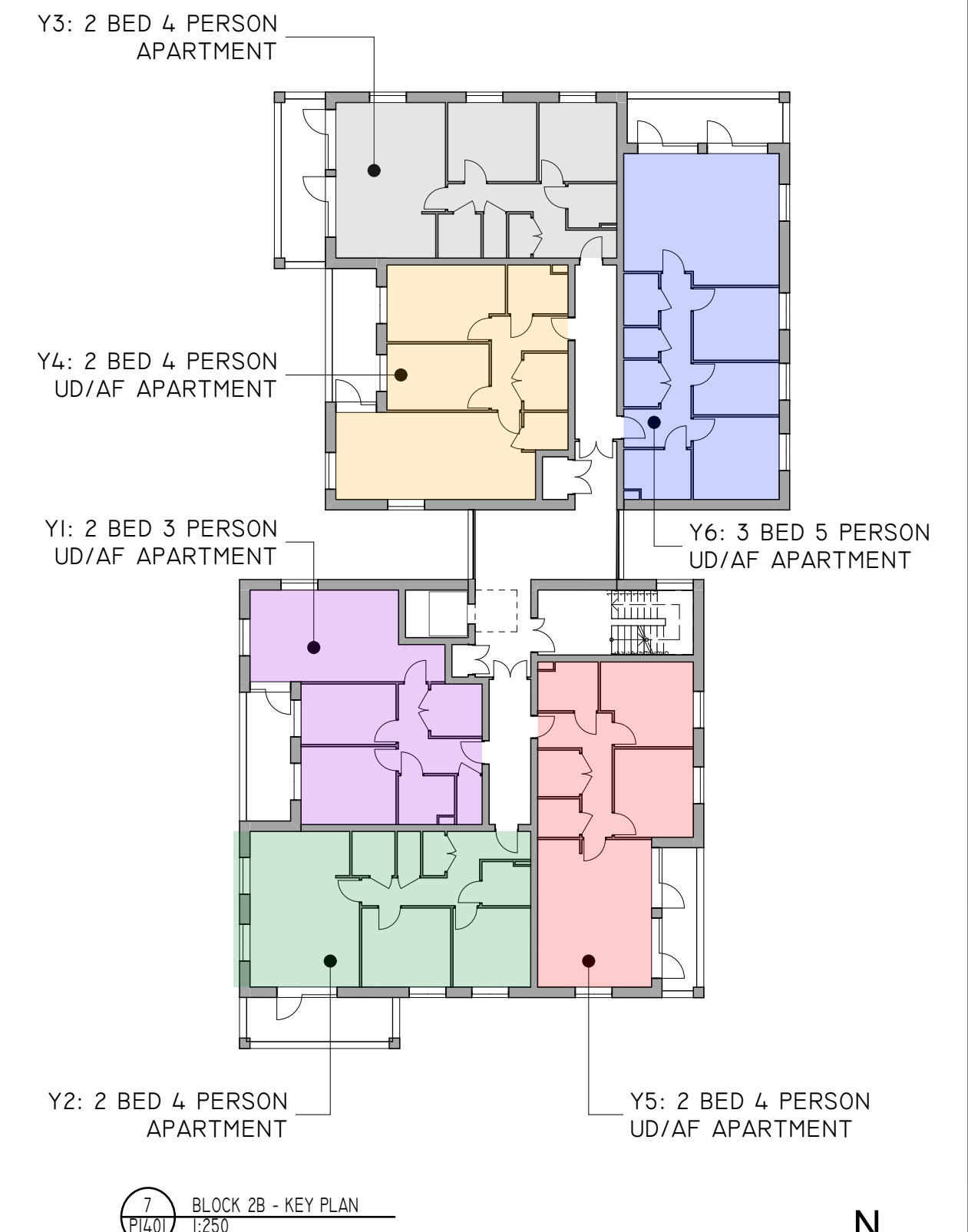
Y2: 2 BED 4 PERSON APARTMENT

MTN APARTMENT TYPE Y2			
ZONE NAME	ACTUAL AREA (SqM)	EQUIVALENT FCC GUIDELINES (SqM)	COMPARISON OF FLOOR AREA (%)
TOTAL STORAGE AREA			
STORE	6.1	6	101.1
TOTAL LIVING/KITCHEN/DINING AREA			
K/L/D	30.8	30	102.5
TOTAL BEDROOM AREA			
AGG BEDROOM	24.4	24.4	100.1
BEDROOM 1	13.0	13	100.2
BEDROOM 2	11.4	11.4	100.0
P.A.S.			
P.A.S.	11.9	7	170.2
GROSS INTERNAL AREA			
GROSS AREA	81.1	73	111.0

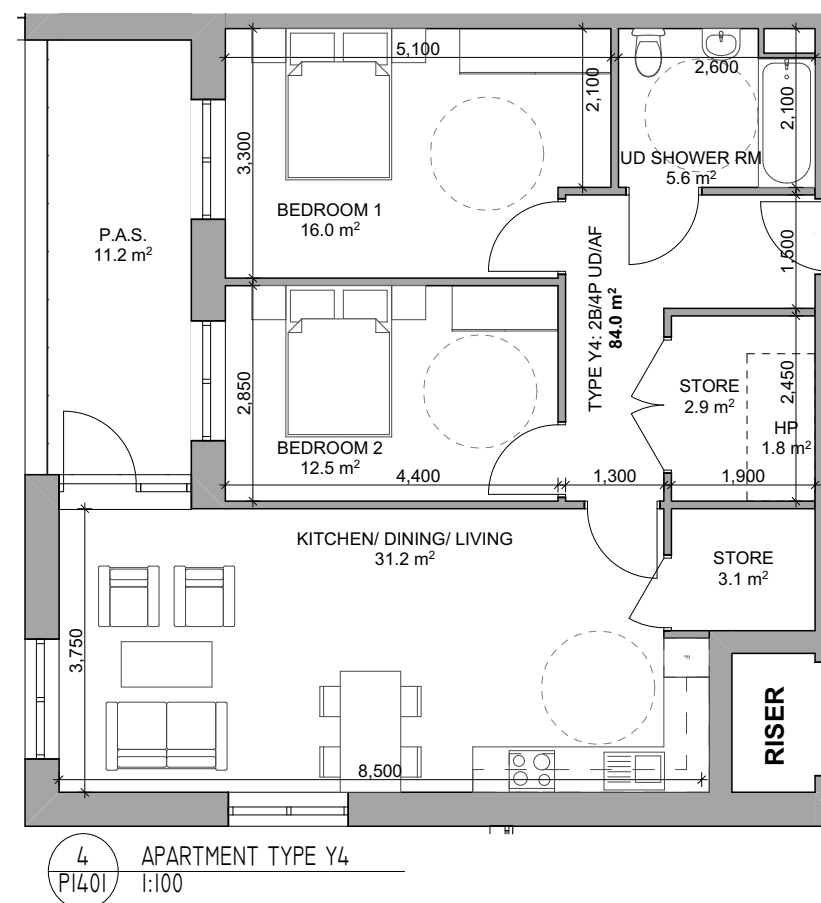
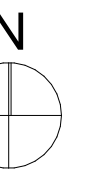


Y3: 2 BED 4 PERSON APARTMENT

MTN APARTMENT TYPE Y3			
ZONE NAME	ACTUAL AREA (SqM)	EQUIVALENT FCC GUIDELINES (SqM)	COMPARISON OF FLOOR AREA (%)
TOTAL STORAGE AREA			
STORE	6.1	6	101.1
TOTAL LIVING/KITCHEN/DINING AREA			
K/L/D	30.8	30	102.6
TOTAL BEDROOM AREA			
AGG BEDROOM	24.4	24.4	100.0
BEDROOM 1	13.0	13	100.1
BEDROOM 2	11.4	11.4	100.0
P.A.S.			
P.A.S.	13.0	7	186.0
GROSS INTERNAL AREA			
GROSS AREA	81.1	73	111.0

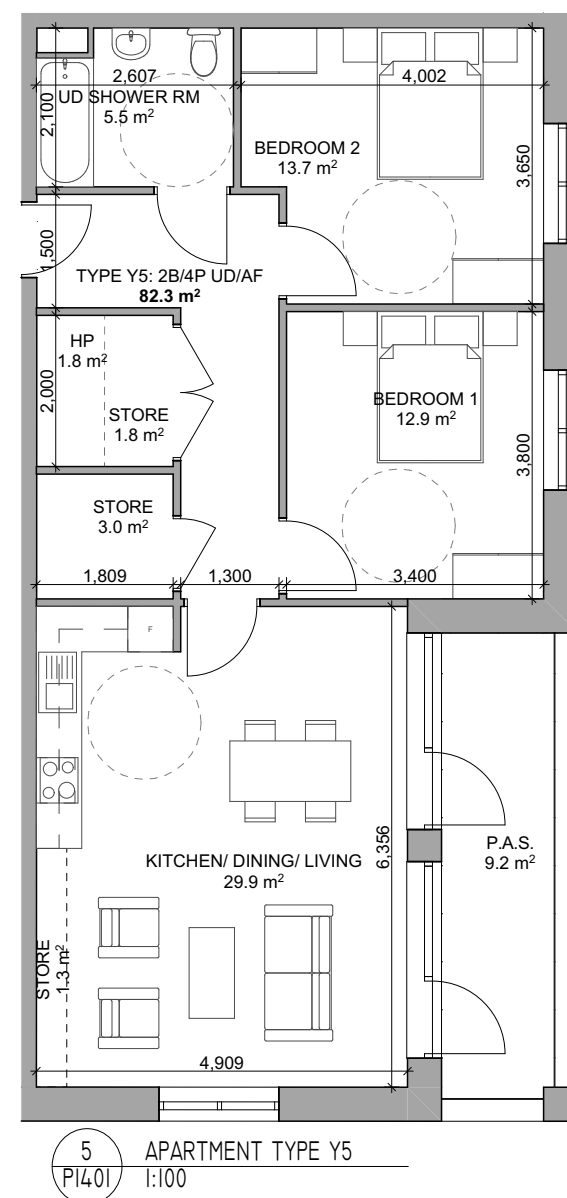


7 BLOCK 2B - KEY PLAN



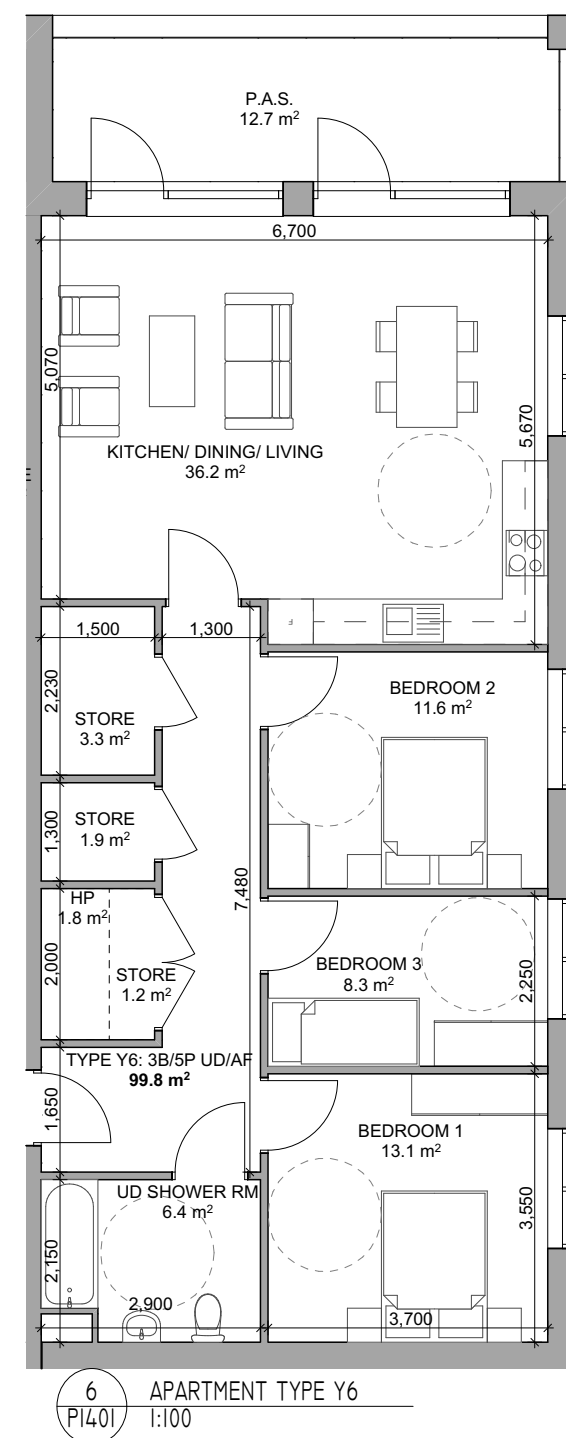
Y4: 2 BED 4 PERSON UD/AF APARTMENT

MTN APARTMENT TYPE Y4			
ZONE NAME	ACTUAL AREA (SqM)	EQUIVALENT FCC GUIDELINES (SqM)	COMPARISON OF FLOOR AREA (%)
TOTAL STORAGE AREA			
STORE	7.6	6	127.0
TOTAL LIVING/KITCHEN/DINING AREA			
K/L/D	31.9	30	106.2
TOTAL BEDROOM AREA			
AGG BEDROOM	25.7	24.4	105.2
BEDROOM 1	13.5	13	103.7
BEDROOM 2	12.2	11.4	107.1
P.A.S.			
P.A.S.	11.2	7	160.1
GROSS INTERNAL AREA			
GROSS AREA	83.8	73	114.7



Y5: 2 BED 4 PERSON UD/AF APARTMENT

MTN APARTMENT TYPE Y5			
ZONE NAME	ACTUAL AREA (SqM)	EQUIVALENT FCC GUIDELINES (SqM)	COMPARISON OF FLOOR AREA (%)
TOTAL STORAGE AREA			
STORE	6.1	6	100.8
TOTAL LIVING/KITCHEN/DINING AREA			
K/L/D	31.2	30	104.0
TOTAL BEDROOM AREA			
AGG BEDROOM	26.6	24.4	108.9
BEDROOM 1	13.7	13	105.1
BEDROOM 2	12.9	11.4	113.5
P.A.S.			
P.A.S.	9.2	7	131.1
GROSS INTERNAL AREA			
GROSS AREA	82.3	73	112.7



Y6: 3 BED 5 PERSON UD/AF APARTMENT

MTN APARTMENT TYPE Y6			
ZONE NAME	ACTUAL AREA (SqM)	EQUIVALENT FCC GUIDELINES (SqM)	COMPARISON OF FLOOR AREA (%)
TOTAL STORAGE AREA			
STORE	6.5	6	108.3
TOTAL LIVING/KITCHEN/DINING AREA			
K/L/D	36.2	34	106.4
TOTAL BEDROOM AREA			
AGG BEDROOM	33.0	31.5	104.9
BEDROOM 1	13.1	13	101.0
BEDROOM 2	11.6	11.4	101.5
BEDROOM 3	8.3	7.1	117.3
P.A.S.			
P.A.S.	12.7	9	141.4
GROSS INTERNAL AREA			
GROSS AREA	99.8	90	110.9

REVISION	NOTE	DATE
CLIENT:	FINGAL COUNTY COUNCIL	
PROJECT:	MOORETOWN HOUSING	
DRAWING:	UNIT TYPES BLOCK B SECTION 179A - PROPOSAL	
DATE:	27/05/2024	
SCALE:	A1 @ 1:100, I-1, I:250	
JOB NO.:	23.13.MTN	
DRAWING NO.:	PI401	
REV:		

obrain:beary  
O'Brain Beary Architects  
C1 The Steelworks Foley Street Dublin 1  
t+353 1 855 9040  
info@obrainbeary.ie www.obrainbeary.ie