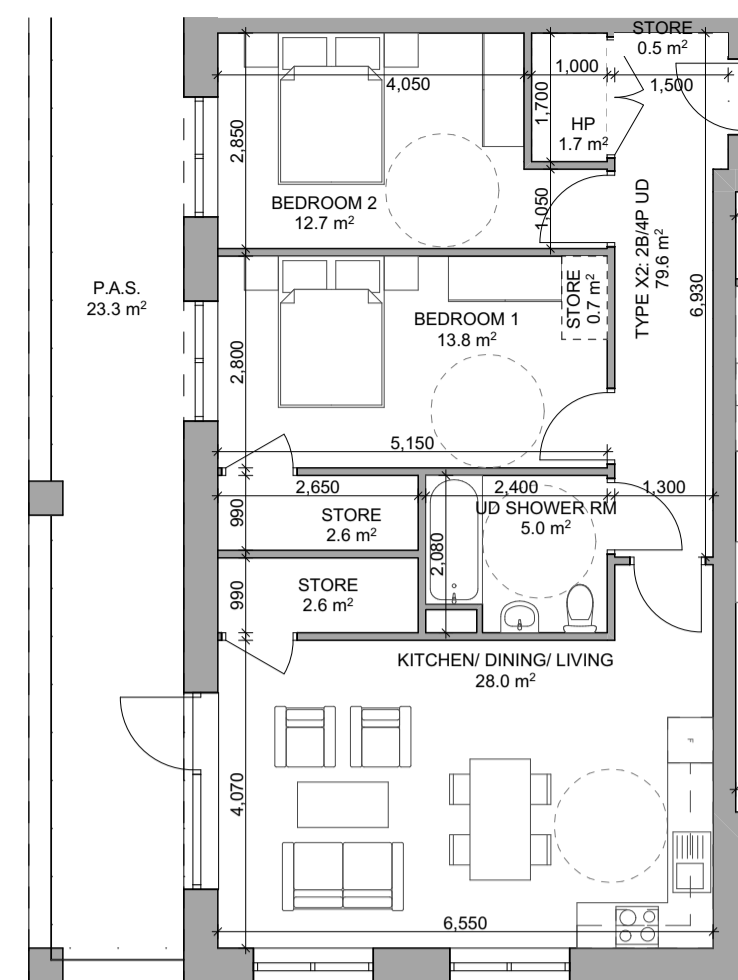
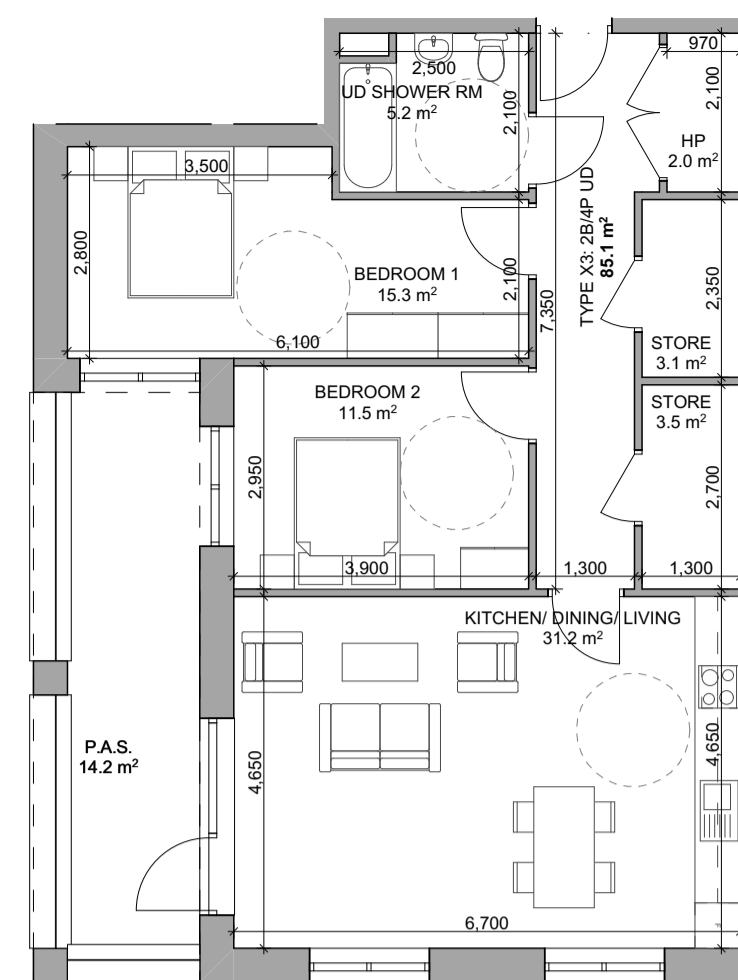


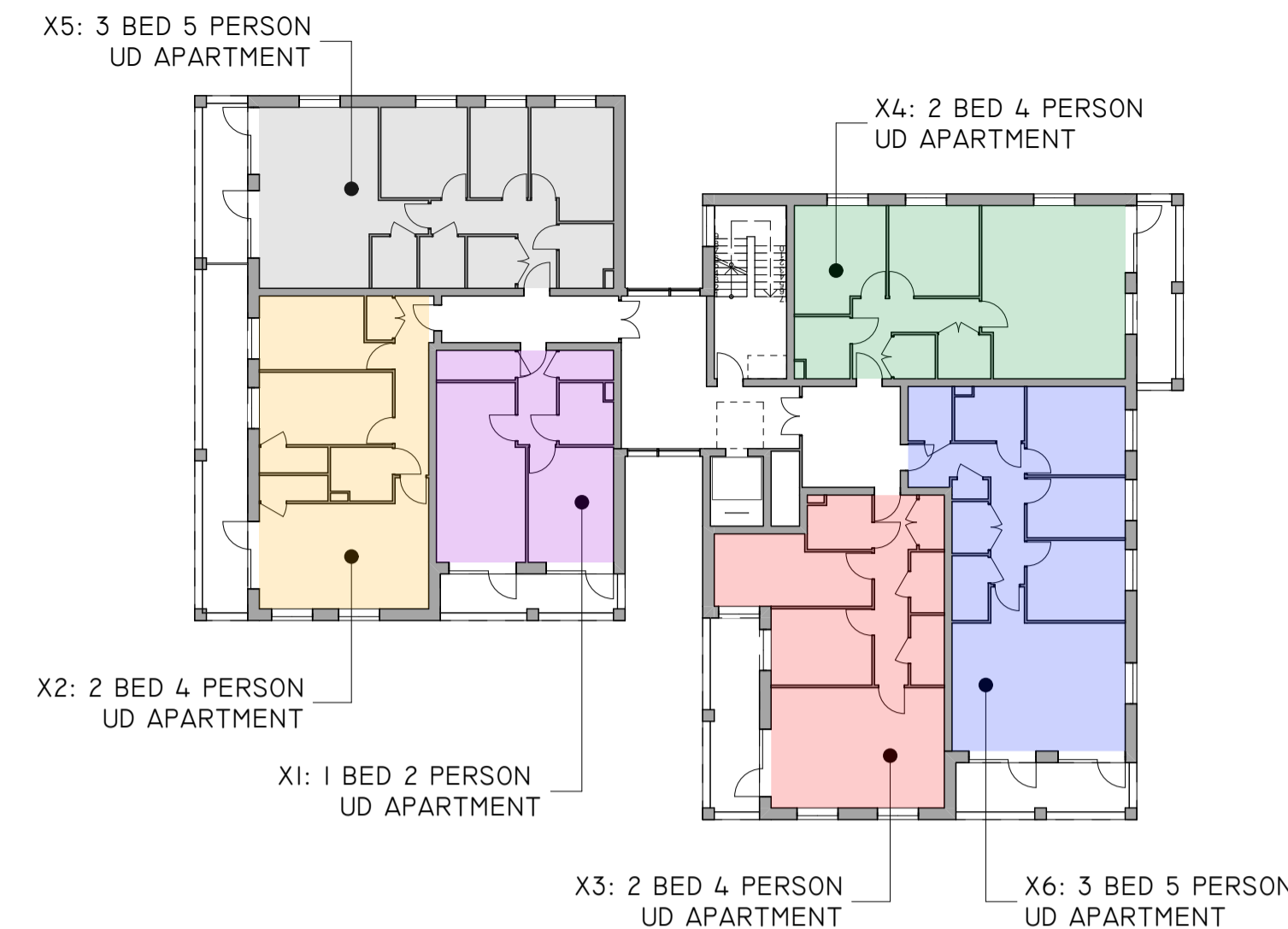
1 APARTMENT TYPE X1
1:100



2 APARTMENT TYPE X2
1:100



3 APARTMENT TYPE X3
1:100



7 BLOCK 2A - KEY PLAN
1:250

X1: 1 BED UD 2 PERSON APARTMENT

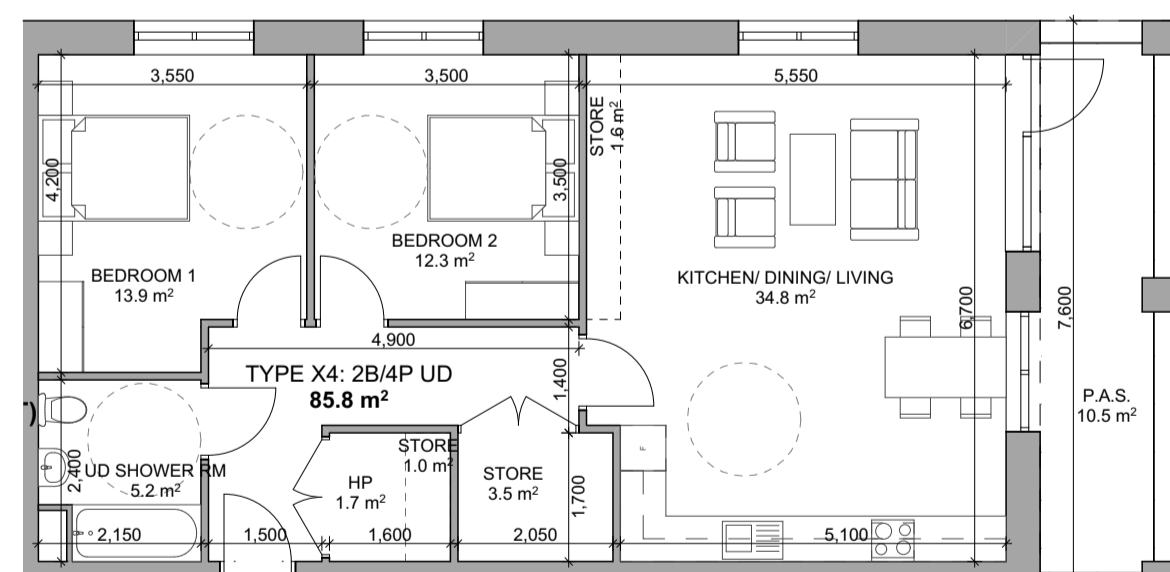
| MTN APARTMENT TYPE X1 | | | |
|----------------------------------|-------------------|---------------------------------|------------------------------|
| ZONE NAME | ACTUAL AREA (SqM) | EQUIVALENT FCC GUIDELINES (SqM) | COMPARISON OF FLOOR AREA (%) |
| TOTAL STORAGE AREA | | | |
| STORE | 3.9 | 3 | 131.0 |
| TOTAL LIVING/KITCHEN/DINING AREA | | | |
| K/L/D | 23.0 | 23 | 100.0 |
| TOTAL BEDROOM AREA | | | |
| BEDROOM 1 | 14.7 | 11.4 | 128.8 |
| P.A.S. | | | |
| P.A.S. | 10.3 | 5 | 205.6 |
| GROSS INTERNAL AREA | | | |
| GROSS AREA | 56.2 | 45 | 124.8 |

X2: 2 BED 4 PERSON UD APARTMENT

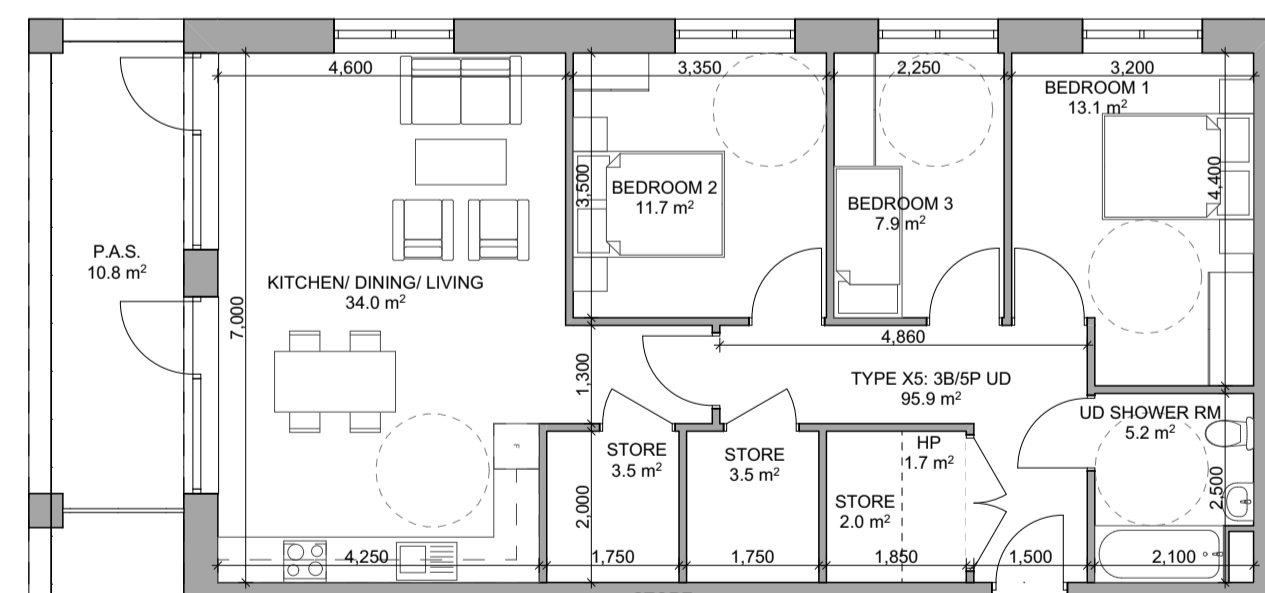
| MTN APARTMENT TYPE X2 | | | |
|----------------------------------|-------------------|---------------------------------|------------------------------|
| ZONE NAME | ACTUAL AREA (SqM) | EQUIVALENT FCC GUIDELINES (SqM) | COMPARISON OF FLOOR AREA (%) |
| TOTAL STORAGE AREA | | | |
| STORE | 6.4 | 6 | 105.8 |
| TOTAL LIVING/KITCHEN/DINING AREA | | | |
| K/L/D | 28.1 | 30 | 93.7 |
| TOTAL BEDROOM AREA | | | |
| AGG BEDROOM | 27.1 | 24.4 | 111.1 |
| BEDROOM 1 | 14.4 | 13 | 110.7 |
| BEDROOM 2 | 12.7 | 11.4 | 111.4 |
| P.A.S. | | | |
| P.A.S. | 23.3 | 7 | 332.8 |
| GROSS INTERNAL AREA | | | |
| GROSS AREA | 79.6 | 73 | 109.0 |

X3: 2 BED 4 PERSON UD APARTMENT

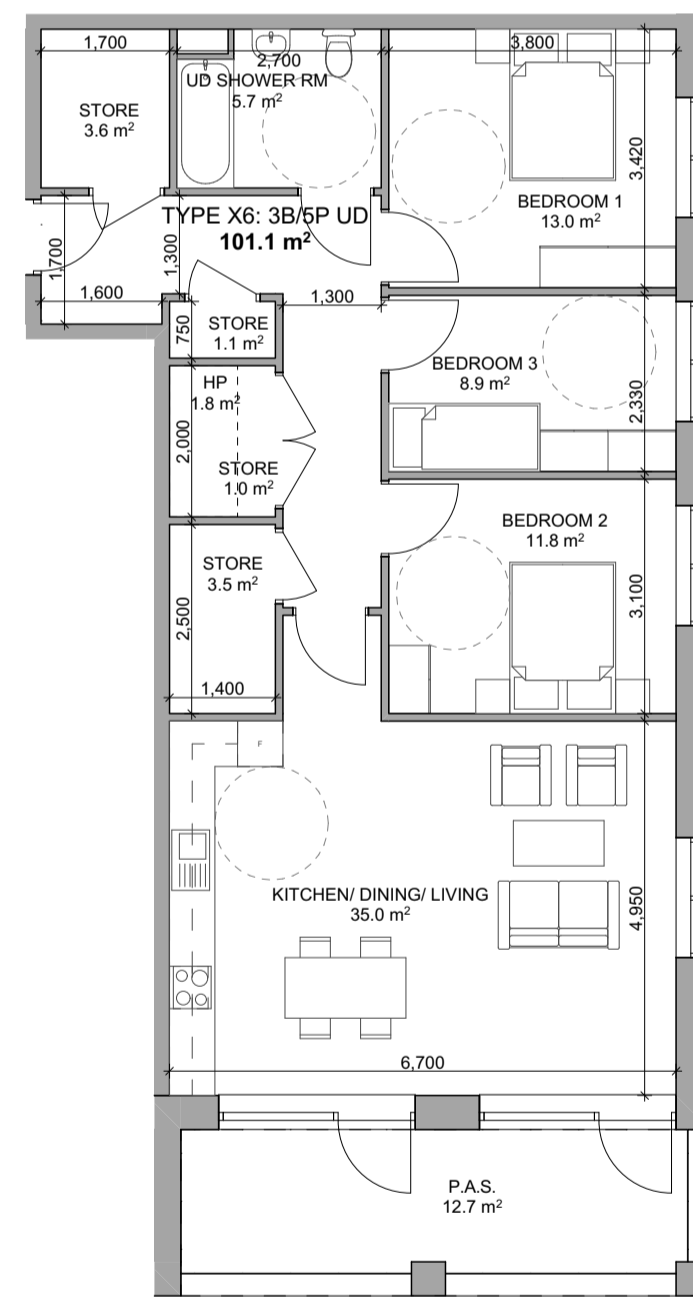
| MTN APARTMENT TYPE X3 | | | |
|----------------------------------|-------------------|---------------------------------|------------------------------|
| ZONE NAME | ACTUAL AREA (SqM) | EQUIVALENT FCC GUIDELINES (SqM) | COMPARISON OF FLOOR AREA (%) |
| TOTAL STORAGE AREA | | | |
| STORE | 7.7 | 6 | 128.5 |
| TOTAL LIVING/KITCHEN/DINING AREA | | | |
| K/L/D | 30.0 | 30 | 100.0 |
| TOTAL BEDROOM AREA | | | |
| AGG BEDROOM | 26.8 | 24.4 | 109.7 |
| BEDROOM 1 | 15.3 | 13 | 117.3 |
| BEDROOM 2 | 11.5 | 11.4 | 100.9 |
| P.A.S. | | | |
| P.A.S. | 14.2 | 7 | 203.5 |
| GROSS INTERNAL AREA | | | |
| GROSS AREA | 85.1 | 73 | 116.6 |



4 APARTMENT TYPE X4
1:100



5 APARTMENT TYPE X5
1:100



6 APARTMENT TYPE X6
1:100

X4: 2 BED 4 PERSON UD APARTMENT

| MTN APARTMENT TYPE X4 | | | |
|----------------------------------|-------------------|---------------------------------|------------------------------|
| ZONE NAME | ACTUAL AREA (SqM) | EQUIVALENT FCC GUIDELINES (SqM) | COMPARISON OF FLOOR AREA (%) |
| TOTAL STORAGE AREA | | | |
| STORE | 6.1 | 6 | 101.3 |
| TOTAL LIVING/KITCHEN/DINING AREA | | | |
| K/L/D | 34.8 | 30 | 116.0 |
| TOTAL BEDROOM AREA | | | |
| AGG BEDROOM | 26.2 | 24.4 | 107.3 |
| BEDROOM 1 | 13.9 | 13 | 107.1 |
| BEDROOM 2 | 12.3 | 11.4 | 107.4 |
| P.A.S. | | | |
| P.A.S. | 10.5 | 7 | 150.0 |
| GROSS INTERNAL AREA | | | |
| GROSS AREA | 85.8 | 73 | 117.4 |

X5: 3 BED 5 PERSON UD APARTMENT

| MTN APARTMENT TYPE X5 | | | |
|----------------------------------|-------------------|---------------------------------|------------------------------|
| ZONE NAME | ACTUAL AREA (SqM) | EQUIVALENT FCC GUIDELINES (SqM) | COMPARISON OF FLOOR AREA (%) |
| TOTAL STORAGE AREA | | | |
| STORE | 9.0 | 9 | 100.0 |
| TOTAL LIVING/KITCHEN/DINING AREA | | | |
| K/L/D | 34.0 | 34 | 100.0 |
| TOTAL BEDROOM AREA | | | |
| AGG BEDROOM | 32.7 | 31.5 | 103.8 |
| BEDROOM 1 | 15.1 | 13 | 100.7 |
| BEDROOM 2 | 11.7 | 11.4 | 102.9 |
| BEDROOM 3 | 7.9 | 7.1 | 110.8 |
| P.A.S. | | | |
| P.A.S. | 10.8 | 9 | 120.0 |
| GROSS INTERNAL AREA | | | |
| GROSS AREA | 95.9 | 90 | 106.5 |

X6: 3 BED 5 PERSON UD APARTMENT

| MTN APARTMENT TYPE X6 | | | |
|----------------------------------|-------------------|---------------------------------|------------------------------|
| ZONE NAME | ACTUAL AREA (SqM) | EQUIVALENT FCC GUIDELINES (SqM) | COMPARISON OF FLOOR AREA (%) |
| TOTAL STORAGE AREA | | | |
| STORE | 9.2 | 9 | 101.3 |
| TOTAL LIVING/KITCHEN/DINING AREA | | | |
| K/L/D | 35.0 | 34 | 102.8 |
| TOTAL BEDROOM AREA | | | |
| AGG BEDROOM | 33.7 | 31.5 | 106.7 |
| BEDROOM 1 | 13.0 | 13 | 100.0 |
| BEDROOM 2 | 11.8 | 11.4 | 103.3 |
| BEDROOM 3 | 8.9 | 7.1 | 124.6 |
| P.A.S. | | | |
| P.A.S. | 12.7 | 9 | 141.4 |
| GROSS INTERNAL AREA | | | |
| GROSS AREA | 101.1 | 90 | 112.3 |

| REVISION | NOTE | DATE |
|--------------|---|------|
| CLIENT: | FINGAL COUNTY COUNCIL | |
| PROJECT: | MOORETOWN HOUSING | |
| DRAWING: | UNIT TYPES BLOCK A SECTION 179A - PROPOSAL | |
| DATE: | 27/05/2024 | |
| SCALE: | A1 @ 1:100, I, II, 1:250 | |
| JOB NO.: | 23.13.MTN | |
| DRAWING NO.: | PI400 | |
| REV: | | |

obrain:beary

O'Brian Beary Architects
C1 The Steelworks Foley Street Dublin 1
t: 353 1 855 9040
info@obrainbeary.ie www.obrainbeary.ie