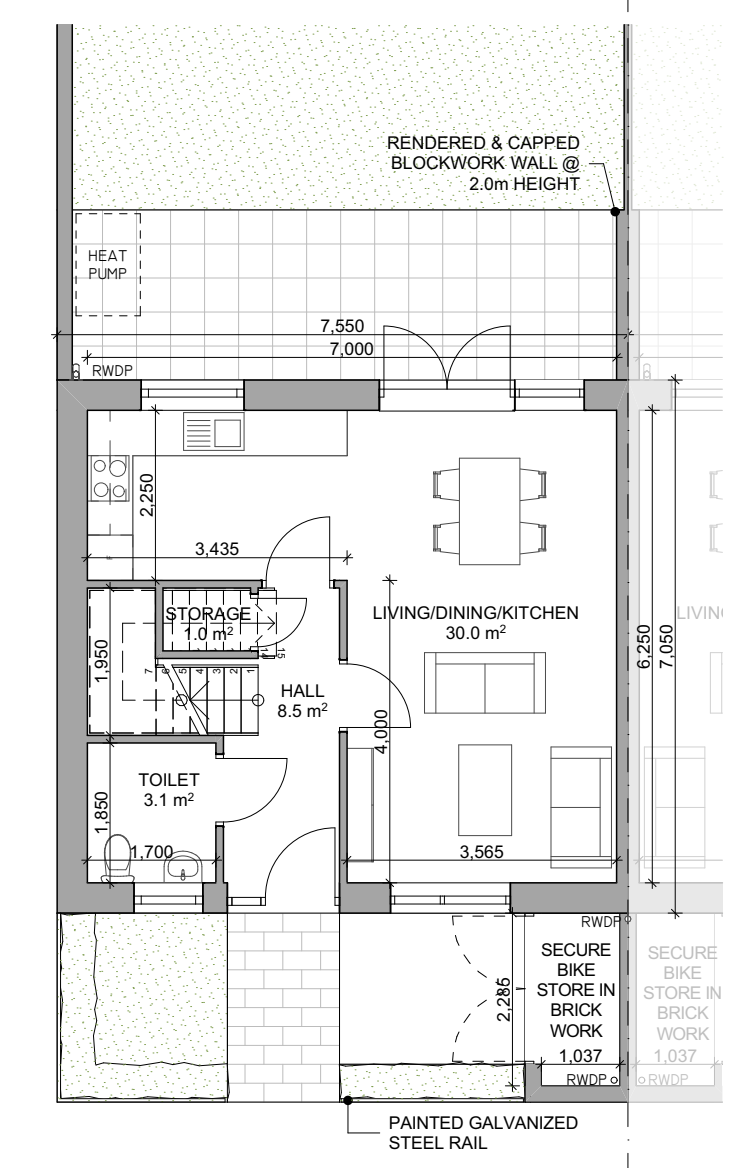
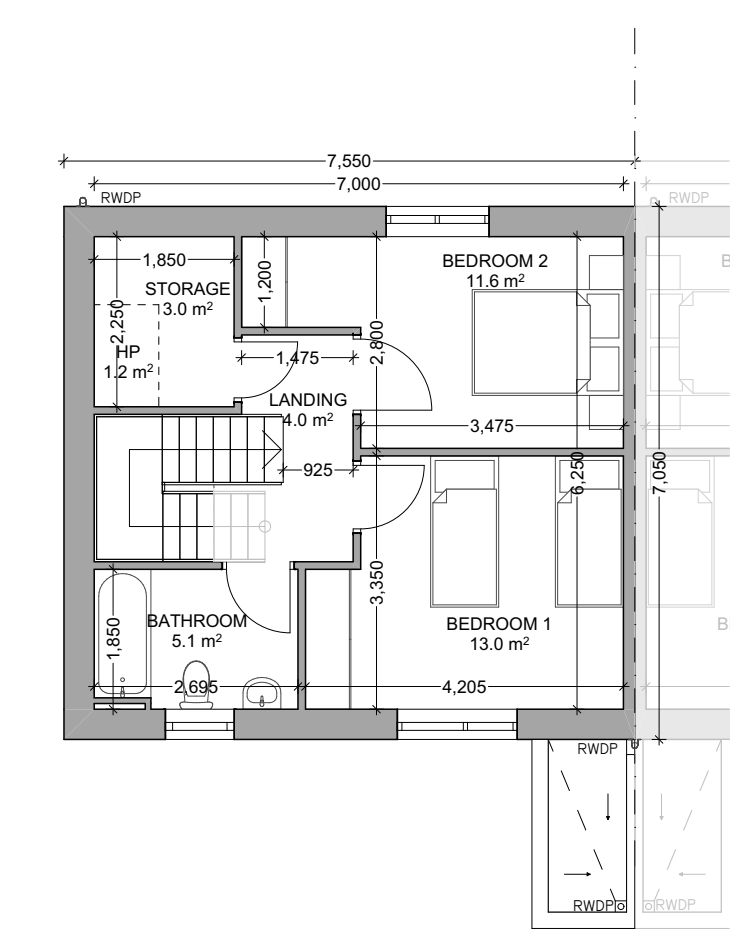


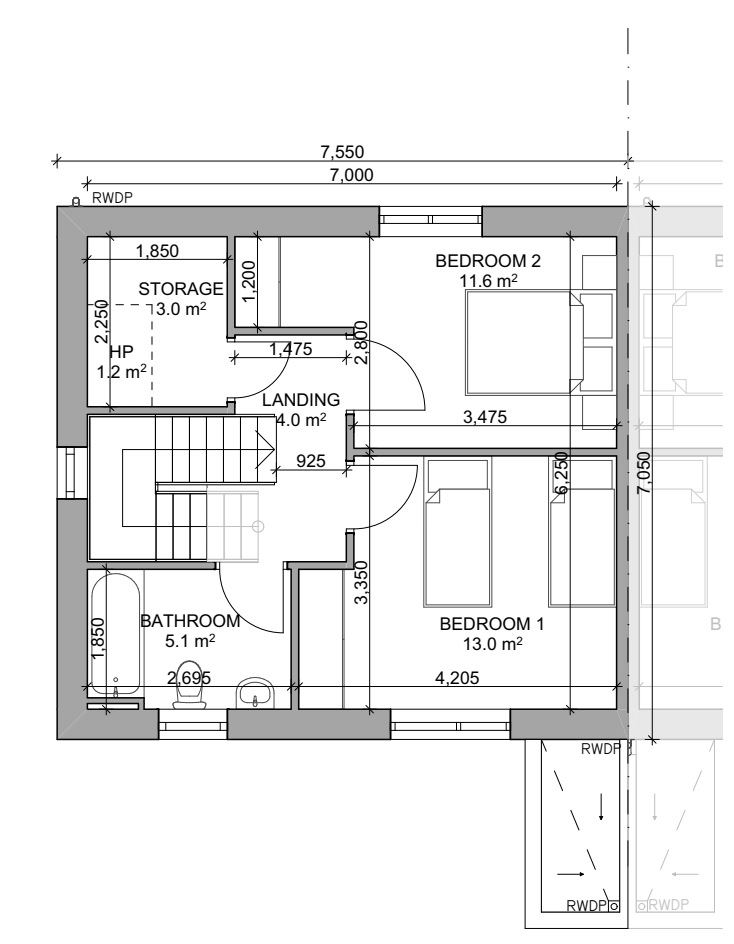
1 GROUND FLOOR
1:100
TYPE A - END TERRACE, LEFT GABLE NO OPE



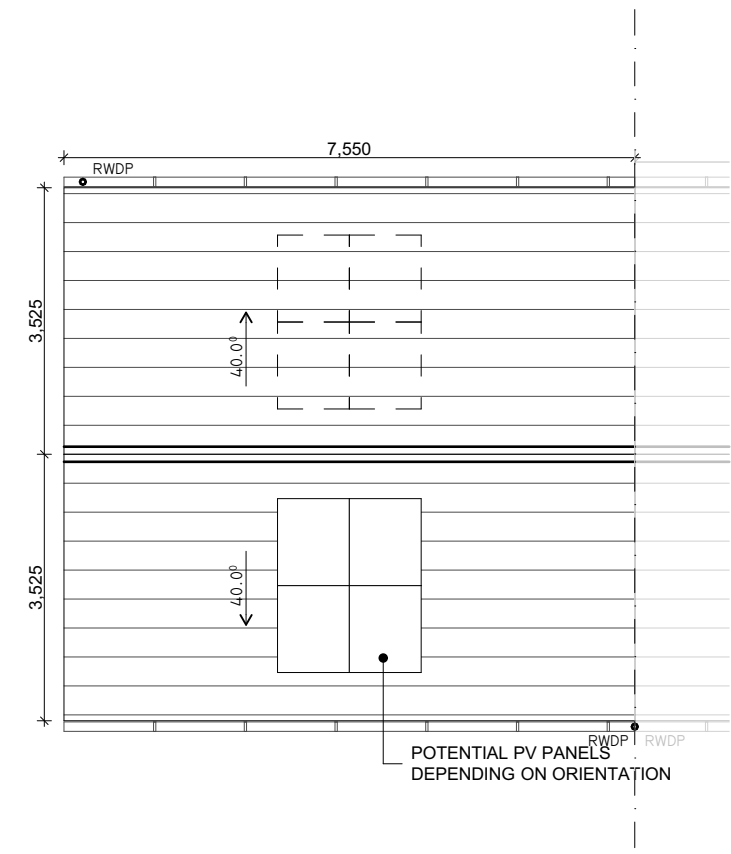
2 GROUND FLOOR
1:100
TYPE A - END TERRACE, LEFT GABLE WITH OPE



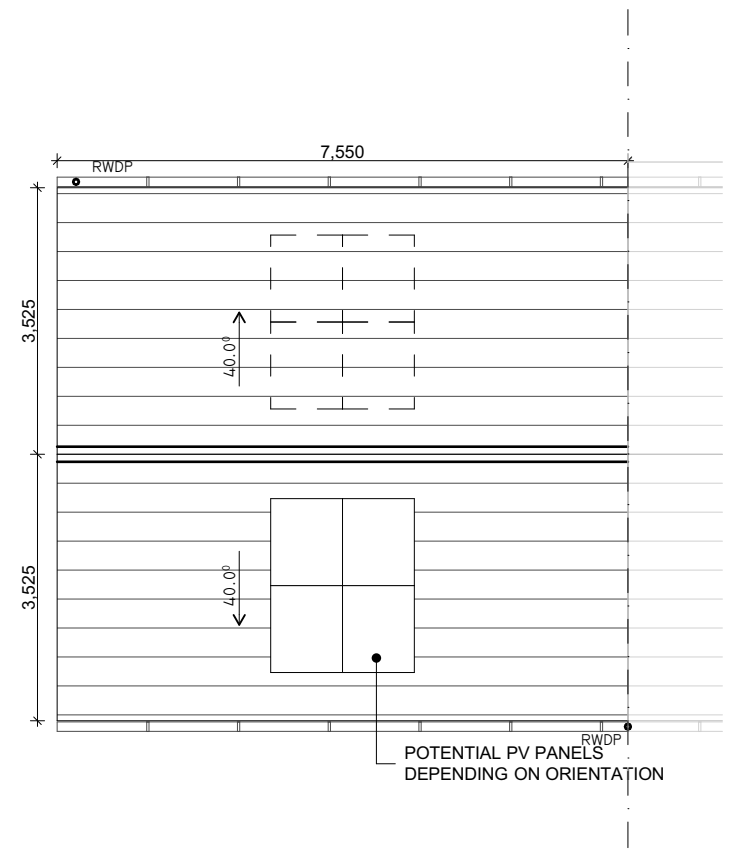
3 FIRST FLOOR
1:100
TYPE A - END TERRACE, LEFT GABLE NO OPE



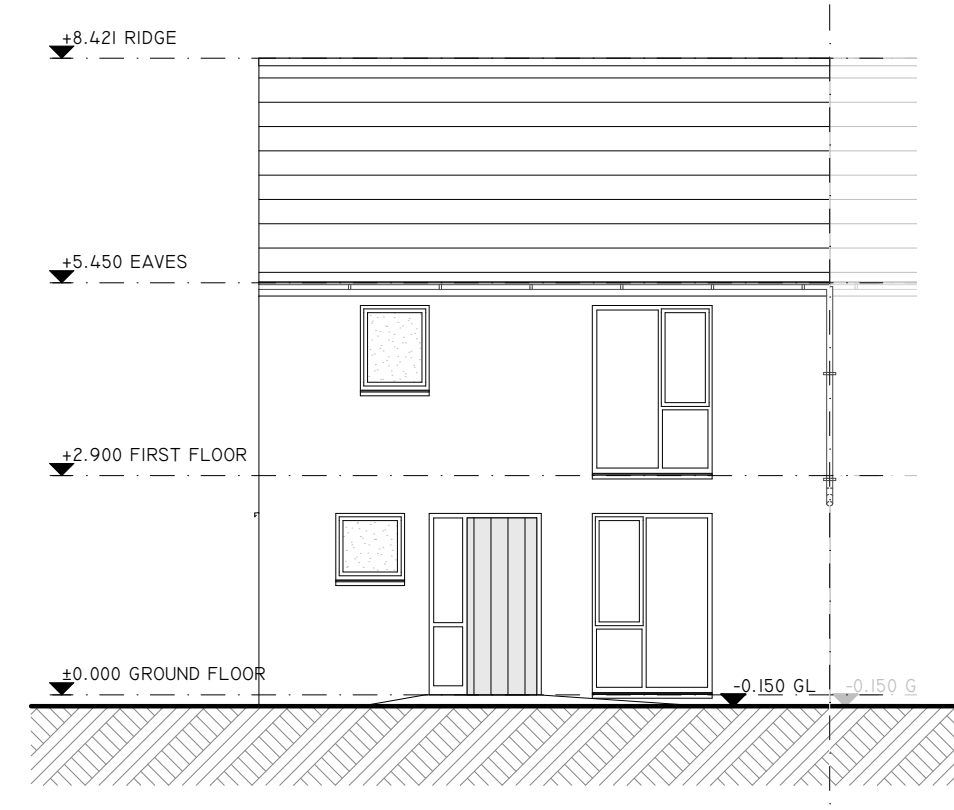
4 FIRST FLOOR
1:100
TYPE A - END TERRACE, LEFT GABLE WITH OPE



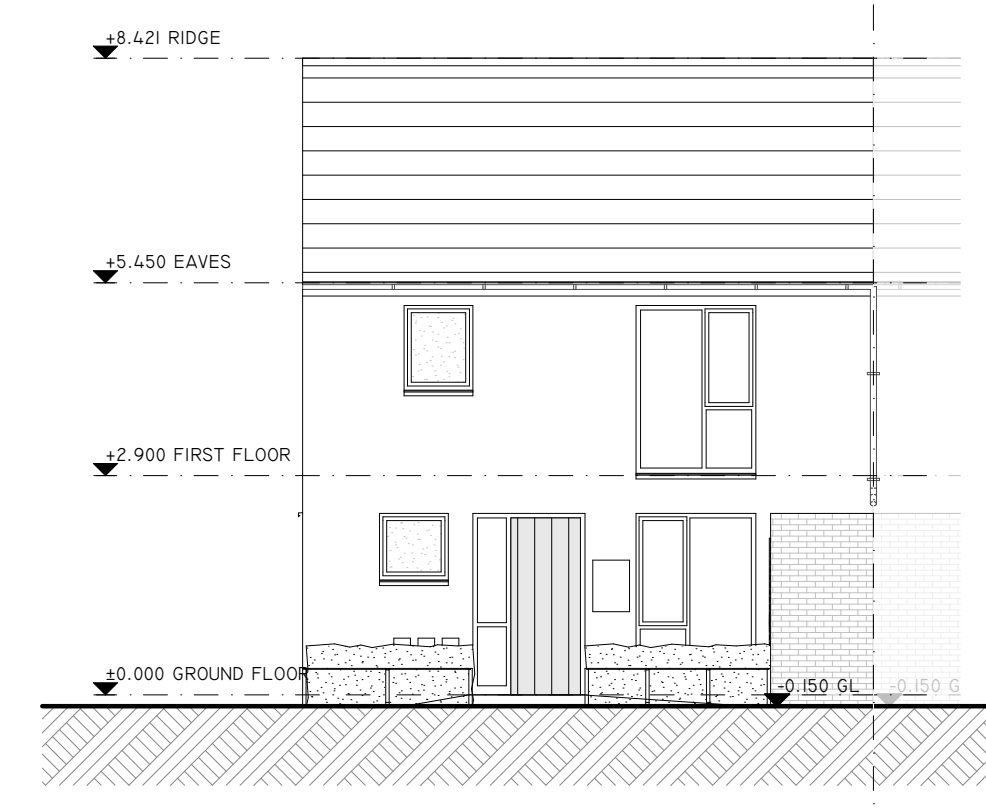
5 ROOF LEVEL
1:100
TYPE A - END TERRACE, LEFT GABLE NO OPE



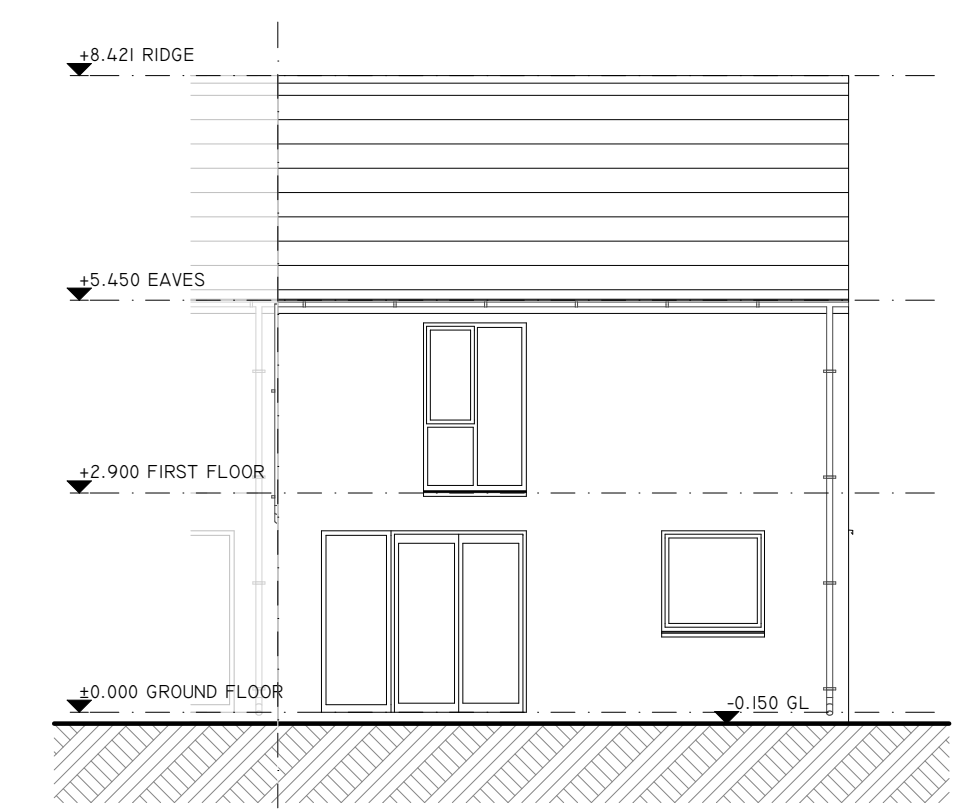
6 ROOF LEVEL
1:100
TYPE A - END TERRACE, LEFT GABLE WITH OPE



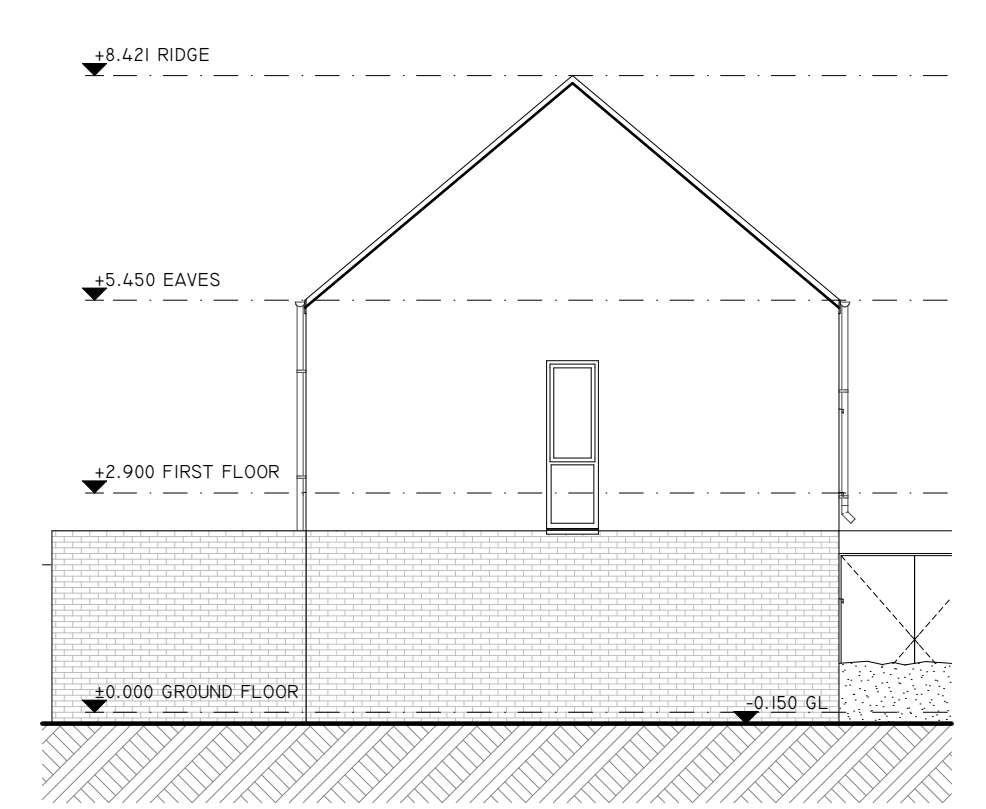
7 FRONT ELEVATION
1:100
TYPE A - END TERRACE, LEFT GABLE



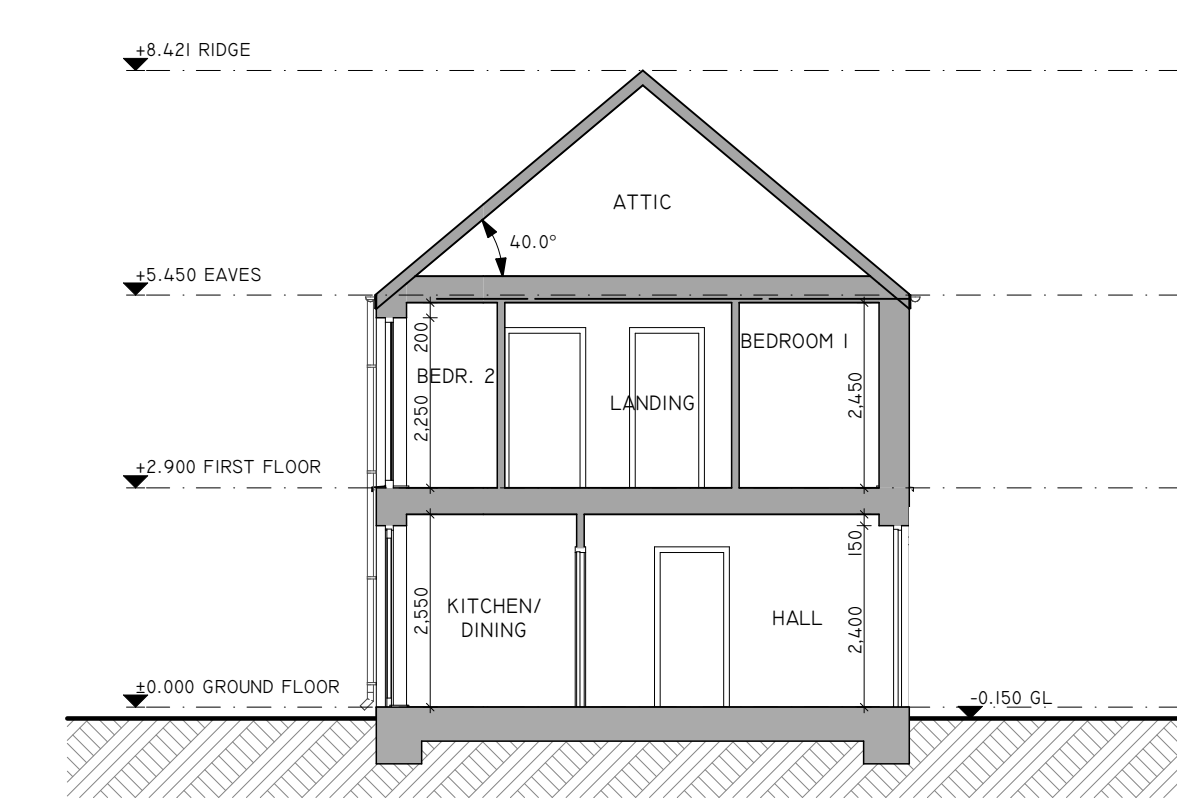
10 FRONT ELEVATION - GARDEN
1:100
TYPE A - END TERRACE, LEFT GABLE - FRONT GARDEN



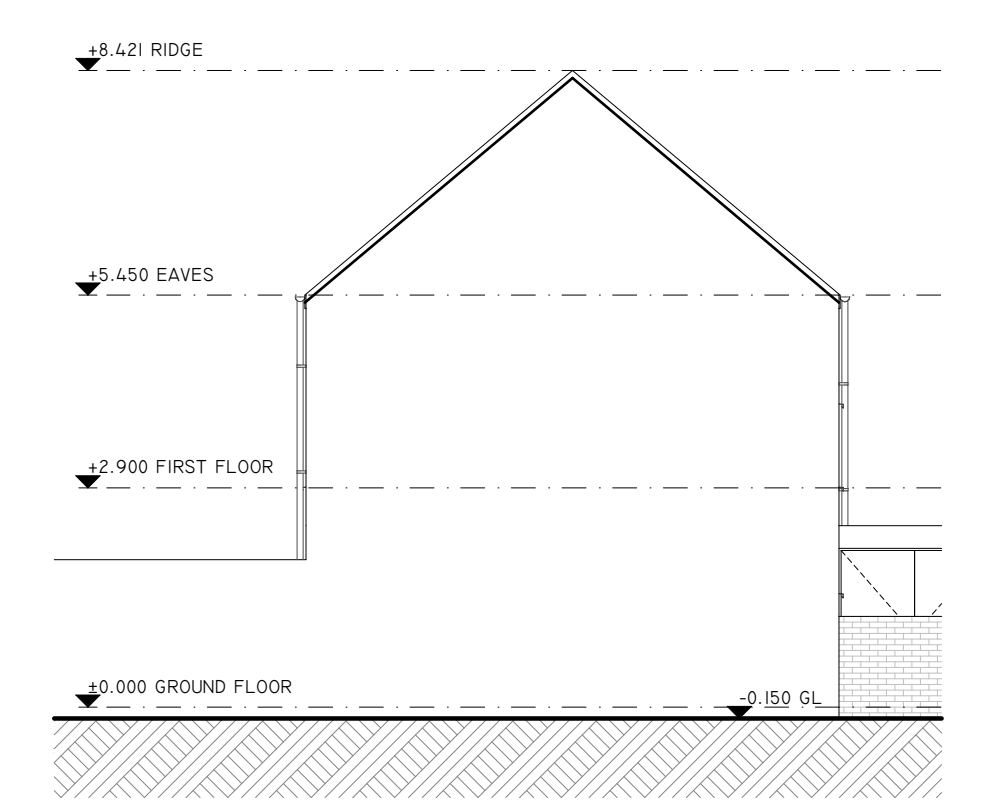
8 REAR ELEVATION
1:100
TYPE A - END TERRACE, LEFT GABLE



11 SIDE ELEVATION 2
1:100
TYPE A - END TERRACE, LEFT GABLE WITH OPE



9 SECTION
1:100
TYPE A - CROSS SECTION



12 SIDE ELEVATION 1
1:100
TYPE A - END TERRACE, LEFT GABLE NO OPE

- SCHEDULE OF EXTERNAL FINISHES**
- BLUE-BLACK FIBRE CEMENT SLATES
 - SMOOTH RENDER - PAINTED FINISH OR PROPRIETARY RENDER SYSTEM
 - SELECTED BRICK FINISH TO BIKE STORE, BIN STORE AND WHERE INDICATED ON DRAWINGS
 - WINDOWS TO BE ALUCLAD OR UPVC
 - CILLS TO BE PRECAST CONCRETE OR POWDER COATED ALUMINIUM
 - RAINWATER GOODS TO BE PVC OR ALUMINIUM, COLOUR MATCHED TO WINDOWS

- SERVICES INTEGRATION**
- ALL DRAINAGE TO FRONT BATHROOM/WCS INTERNAL - NO EXTERNAL STACKS
 - ALL VENTING TO FRONT ROOMS AS TRICKLE VENT IN WINDOWS
 - NO WALL VENTS IN FRONT FACADE

- PV PANELS**
- PV PANELS WILL BE FITTED TO REAR OR FRONT ROOF SLOPE, DEPENDING ON HOUSE ORIENTATION

- FOR PROVISION + LOCATION OF BIKE STORES & BINS STORES REFER TO SITE PLAN & STREET ELEVATIONS
- SEE ARCHITECTS DESIGN STATEMENT 1:200 STREET ELEVATIONS FOR SAMPLES OF PROPOSED MATERIALS & COLOURS

REVISION	NOTE	DATE
CLIENT:	FINGAL COUNTY COUNCIL	
PROJECT:	MOORETOWN HOUSING	
DRAWING:	HOUSE TYPE A (2 OF 2) SECTION 179A - PROPOSAL	
DATE:	27/05/2024	
SCALE:	AI @ 1:100	
JOB NO.:	23.13.MTN	
DRAWING NO.:	PI001	
REV:		

obrain:beary

O'Brain Beary Architects
C1 The Steelworks Foley Street Dublin 1
t+353 1 855 9040
info@obrainbeary.ie www.obrainbeary.ie