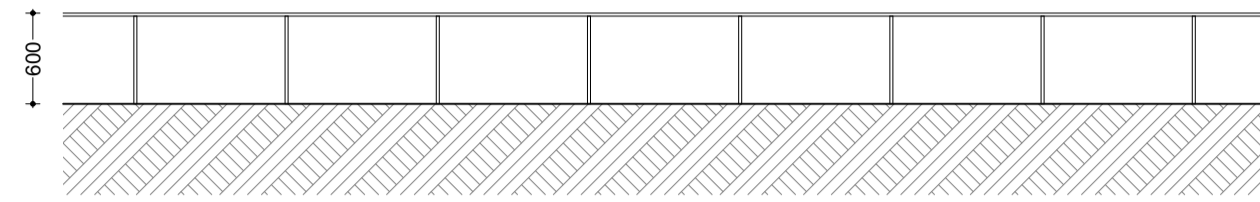
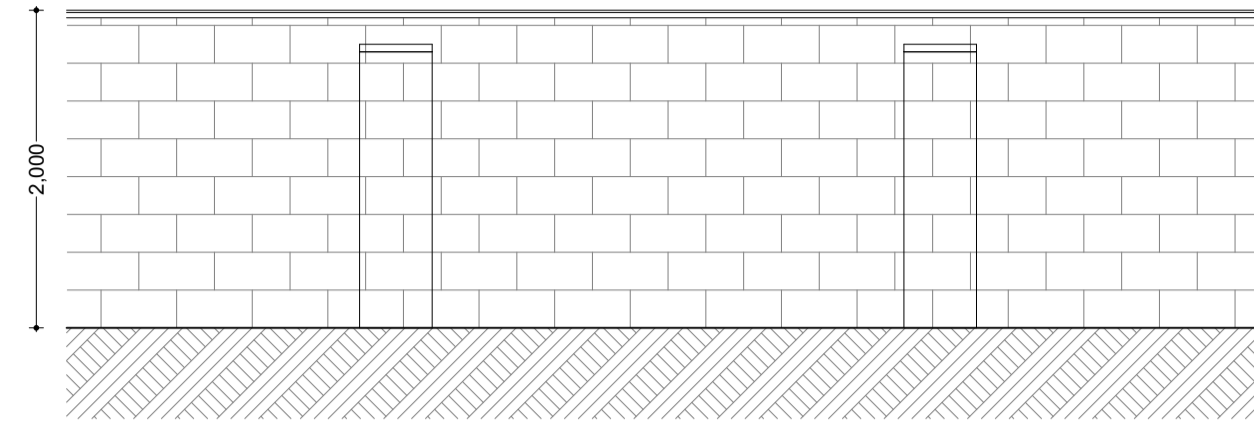


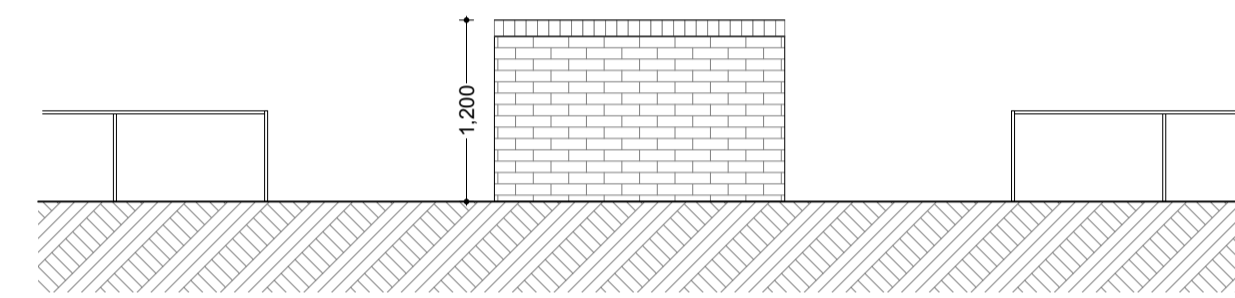
**BOUNDARY TREATMENT AT 1:50**



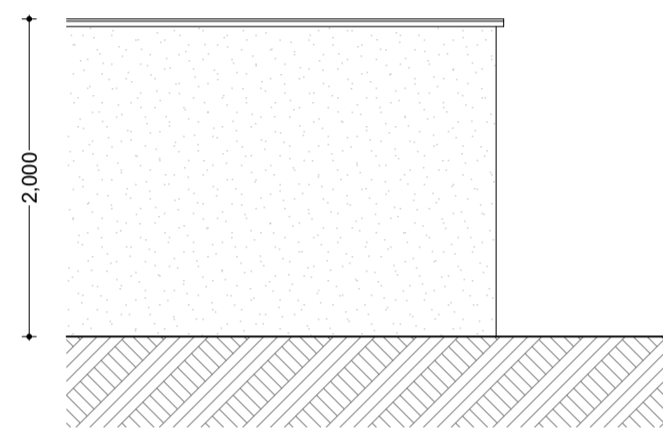
**FRONT GARDEN BOUNDARY WALLS**  
600MM HIGH POWDER COATED GALVANISED STEEL RAILING  
WITH 50MM X 10MM FLAT TOP AND RAIL SUPPORTS



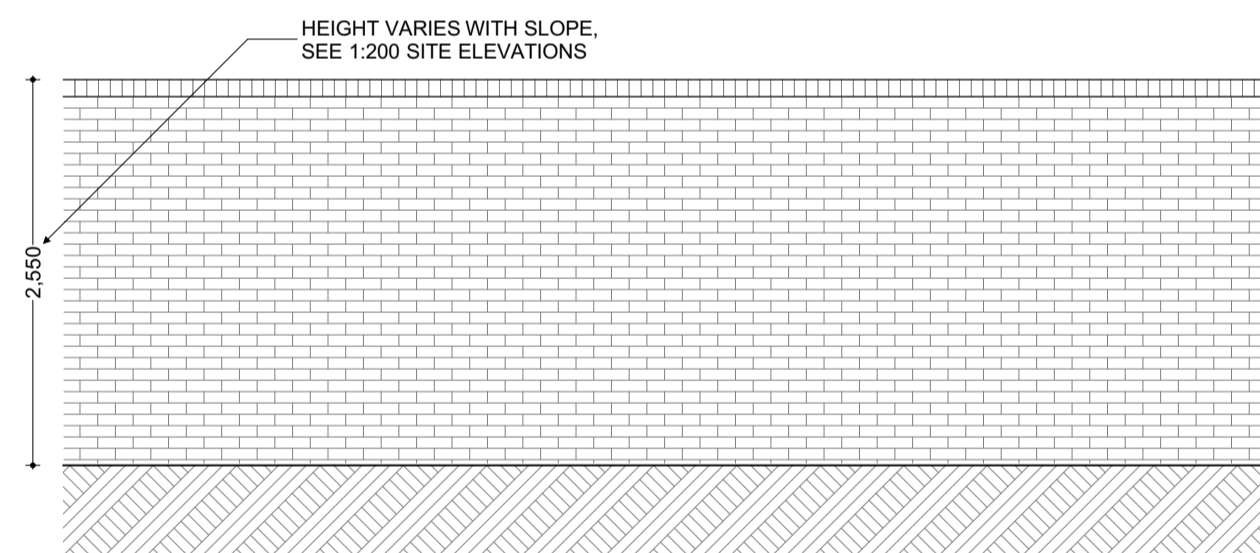
**REAR GARDEN REAR BOUNDARY WALLS**  
2000MM HIGH BLOCKWORK WALL AND PIERS  
WITH PRECAST CONCRETE COPING



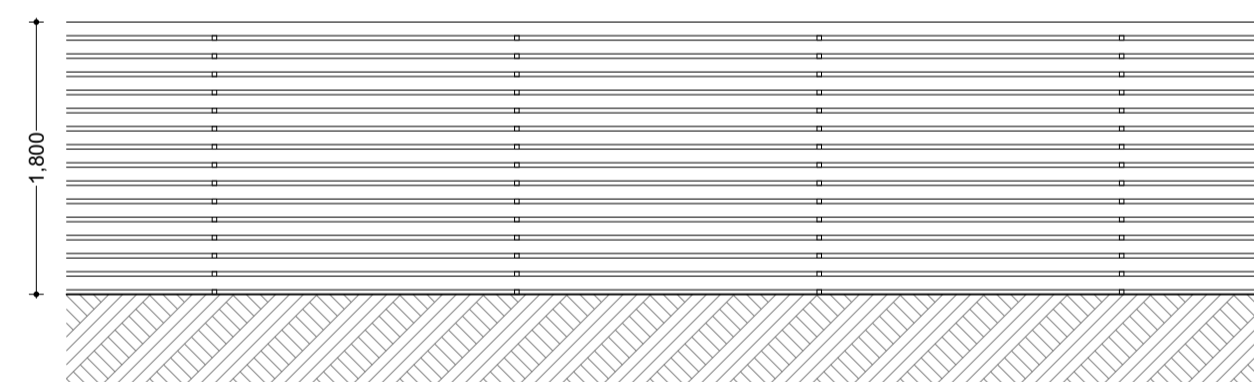
**FRONT GARDEN BOUNDARY WALLS & BINS ENCLOSURE**  
1200mm HIGH BRICK WALL WITH COLOUR MATCHED  
ENGINEERING BRICK CAPPING



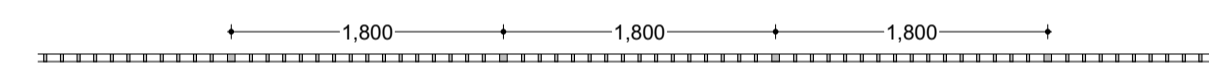
**REAR GARDEN GOSSIP WALLS**  
2000MM HIGH BLOCKWORK GOSSIP WALL WITH PRECAST  
CONCRETE COPING, RENDERED BOTH SIDES



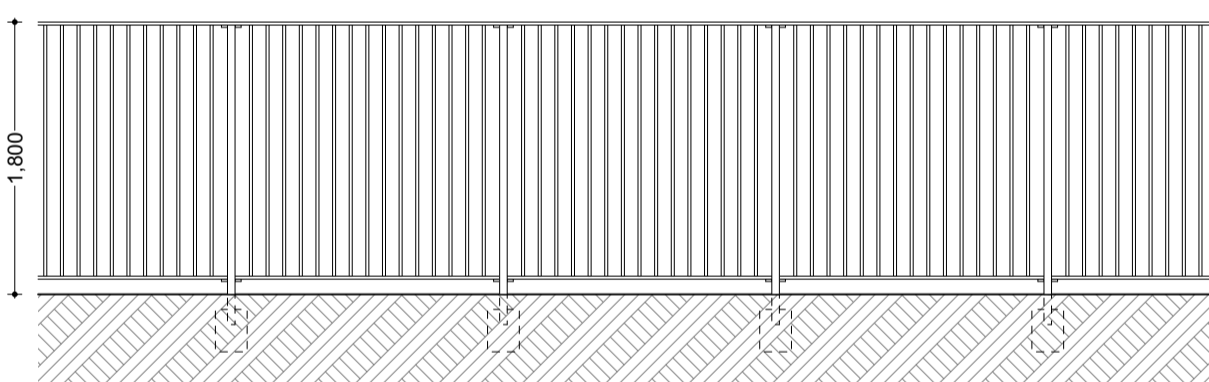
**REAR GARDEN SIDE BOUNDARY WALLS**  
2550MM HIGH BRICK FACED WALL WITH COLOUR  
MATCHED ENGINEERING BRICK CAPPING



**REAR GARDEN REAR BOUNDARY WALLS**  
1800MM HIGH HIT & MISS TIMBER FENCING



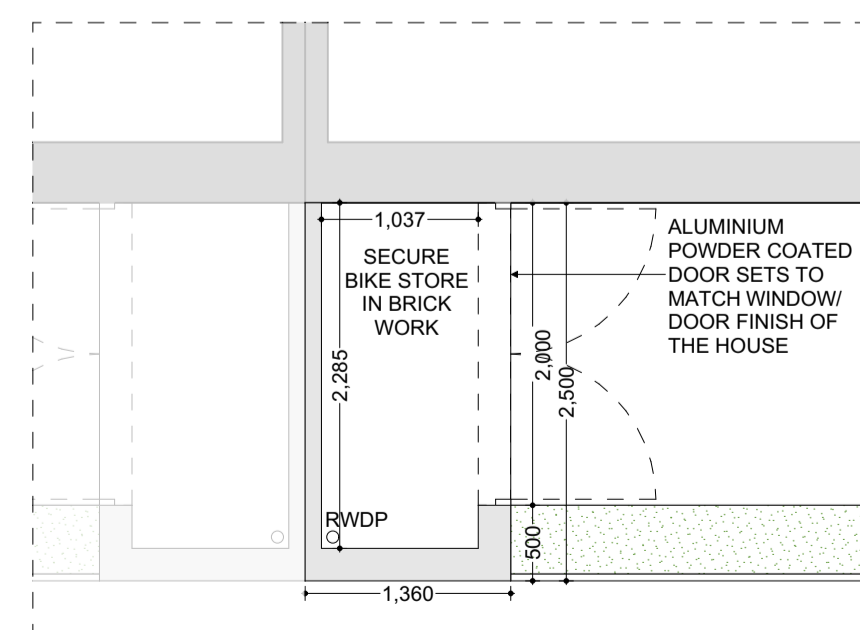
**APARTMENT BLOCKS BOUNDARY RAILING - PLAN VIEW**



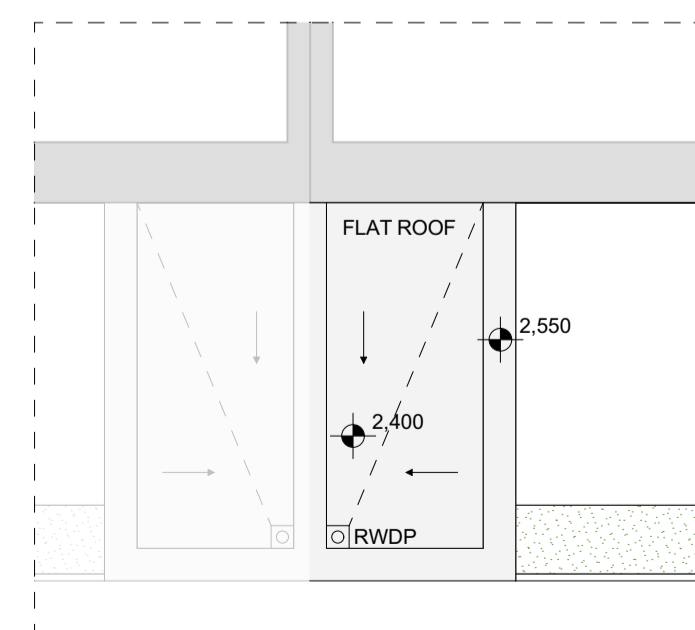
**APARTMENT BLOCKS BOUNDARY RAILING - FRONT VIEW**  
1800MM HIGH POWDER COATED GALVANISED STEEL RAILING  
WITH FLATS AT TOP AND BOTTOM RAIL AND VERTICALS;  
& RECTANGULAR HOLLOW SECTIONS AT 1800MM CENTRES

**BOUNDARY TYPES LEGEND:**

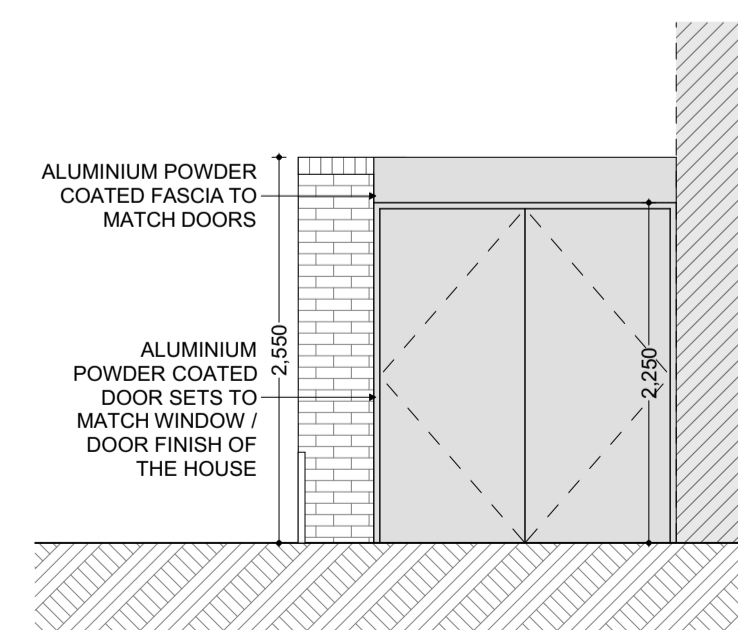
- 600MM HIGH POWDER COATED GALVANISED STEEL RAILING
- 1200MM HIGH BRICK WALL WITH BRICK COPING
- 2550MM HIGH BRICK WALL WITH BRICK COPING
- 2000MM HIGH BLOCKWORK WALL AND PIERS WITH PRECAST CONCRETE COPING
- 2000MM HIGH BLOCKWORK WALL AND PIERS WITH PRECAST CONCRETE COPING, RENDERED BOTH SIDES
- 1800MM HIGH HIT & MISS TIMBER FENCING
- 1800MM HIGH POWDER COATED GALVANISED STEEL RAILING WITH FLATS AT TOP AND BOTTOM RAIL AND VERTICALS; & RECTANGULAR HOLLOW SECTIONS AT 1800MM CENTRES



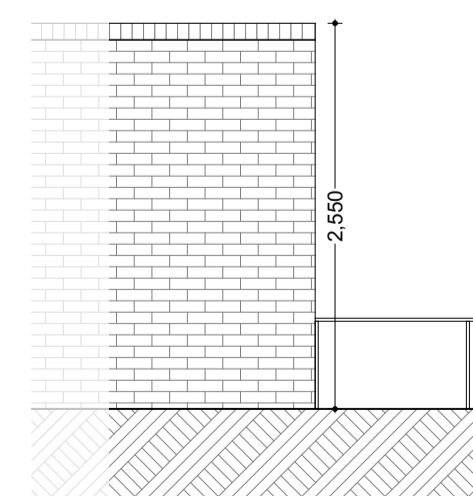
**1 BIKE STORE FLOOR PLAN**  
1:50



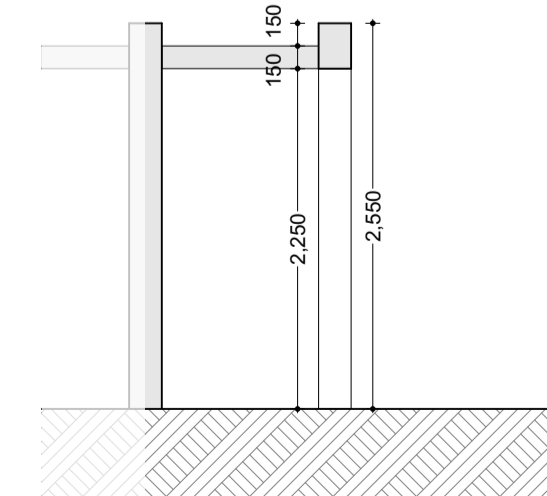
**2 BIKE STORE ROOF PLAN**  
1:50



**3 BIKE STORE FRONT ELEVATION**  
1:50



**4 BIKE STORE SIDE ELEVATION**  
1:50



**5 BIKE STORE SECTION**  
1:50

REVISION	NOTE	DATE
<p>CLIENT: FINGAL COUNTY COUNCIL <span style="float: right;">obrain:beary</span></p> <p>PROJECT: MOORETOWN HOUSING</p> <p>DRAWING: SITE &amp; BOUNDARY DETAILS <span style="float: right;">O'Brien Beary Architects C1 The Steelworks Foley Street Dublin 1 14-353 1 855 9040 info@obrainbeary.ie www.obrainbeary.ie</span></p> <p style="text-align: center;"><b>SECTION 179A - PROPOSAL</b></p> <p>DATE: 27/05/2024 SCALE: A1 @ 1:50 JOB NO: 23.13.MTN DRAWING NO: P0009 REV: P0009</p>		