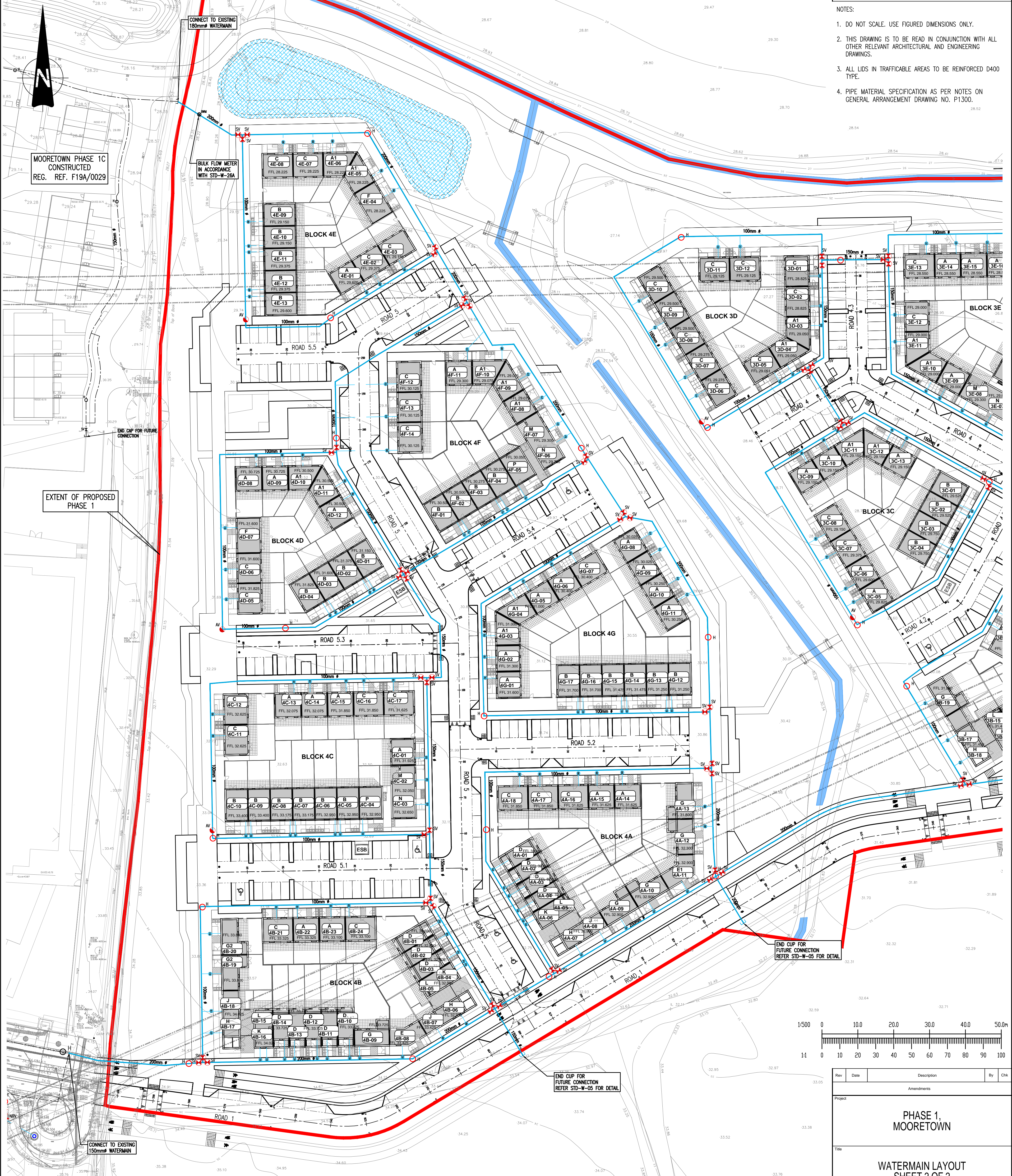


- NOTES:
- DO NOT SCALE. USE FIGURED DIMENSIONS ONLY.
  - THIS DRAWING IS TO BE READ IN CONJUNCTION WITH ALL OTHER RELEVANT ARCHITECTURAL AND ENGINEERING DRAWINGS.
  - ALL LIDS IN TRAFFICABLE AREAS TO BE REINFORCED D400 TYPE.
  - PIPE MATERIAL SPECIFICATION AS PER NOTES ON GENERAL ARRANGEMENT DRAWING NO. P1300.



MOORETOWN PHASE 1C  
CONSTRUCTED  
REG. REF. F19A/0029

EXTENT OF PROPOSED  
PHASE 1

CONNECT TO EXISTING  
180mm WATERMAIN

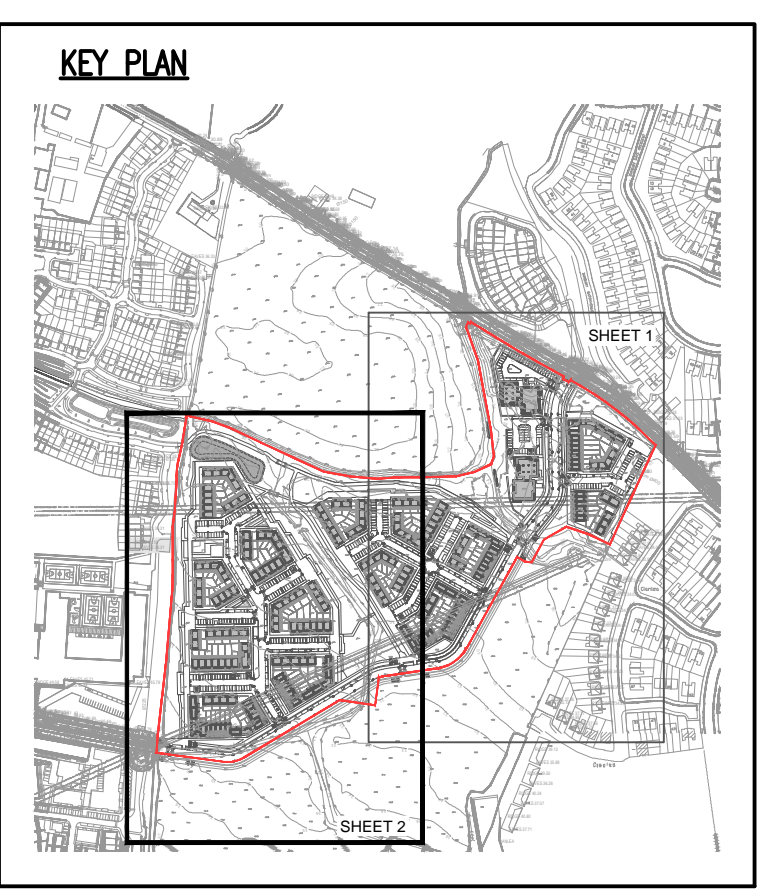
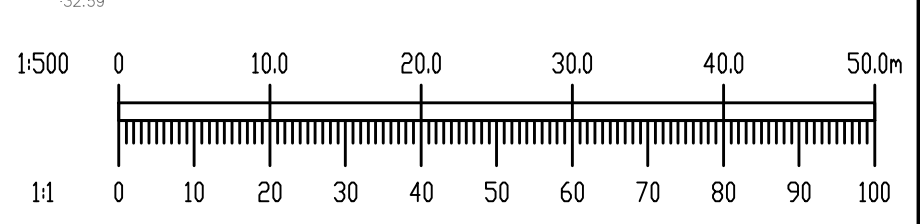
BULK FLOW METER  
IN ACCORDANCE  
WITH STD-W-26A

END CUP FOR FUTURE  
CONNECTION

END CUP FOR  
FUTURE CONNECTION  
REFER STD-W-05 FOR DETAIL

END CUP FOR  
FUTURE CONNECTION  
REFER STD-W-05 FOR DETAIL

CONNECT TO EXISTING  
150mm WATERMAIN



**LEGEND**

- XXXmm # PROPOSED HOPE WATERMAIN WITH PIPE SIZE
- SV PROPOSED SLUCE VALVE
- H PROPOSED HYDRANT
- AV PROPOSED AIRVALVE
- ScV PROPOSED SOURCE VALVE
- PROPOSED BOUNDARY BOX AND CONNECTION
- XXXmm # EXISTING WATERMAIN WITH PIPE SIZE

Rev	Date	Description	By	Chk
Amendments				
Project				
<b>PHASE 1, MOORETOWN</b>				
Title				
<b>WATERMAIN LAYOUT SHEET 2 OF 2</b>				
Client				
FINGAL COUNTY COUNCIL				
Status				
<b>PUBLIC DISPLAY</b>				
Designed By	RM	Approved	MD	Waterman Ref
				23-102
Drawn By	MS	Date	MARCH 2024	
			Scale @ A1 1:500	
Project - Originator - Volume - Level - Type - Role - Number				
Revision				
MTN - WMC - PH1 - GF - DR - C - P1302				