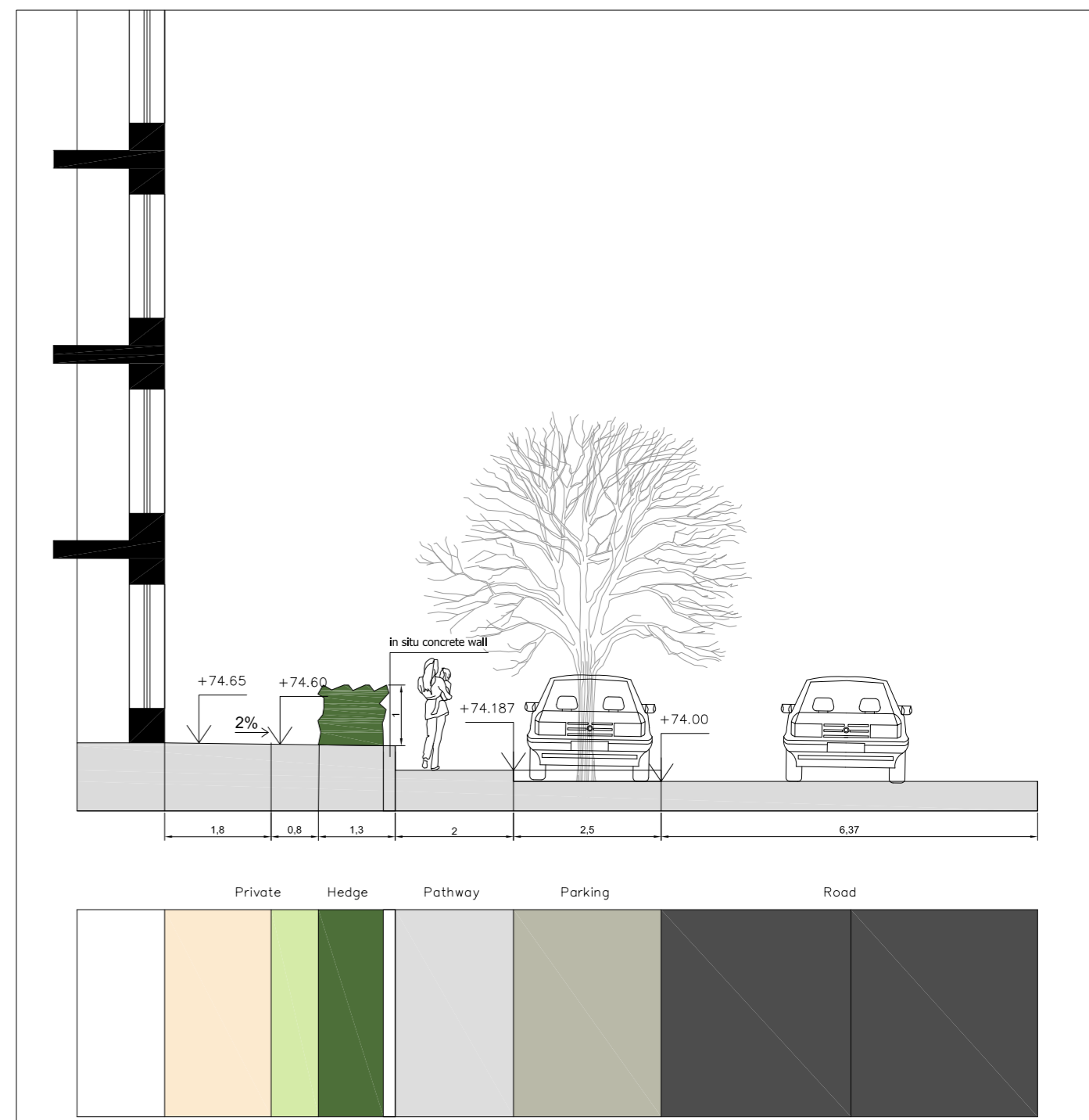
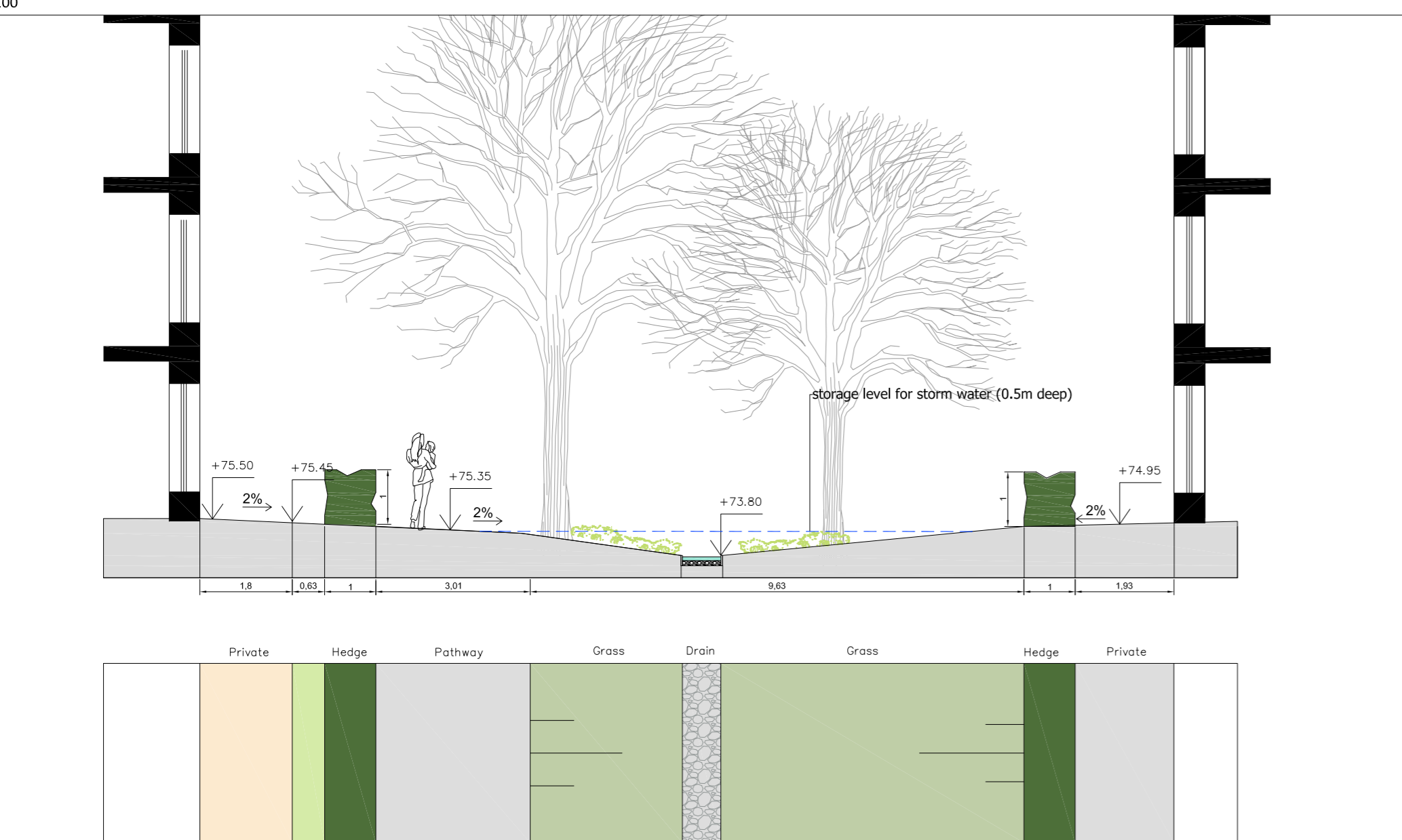


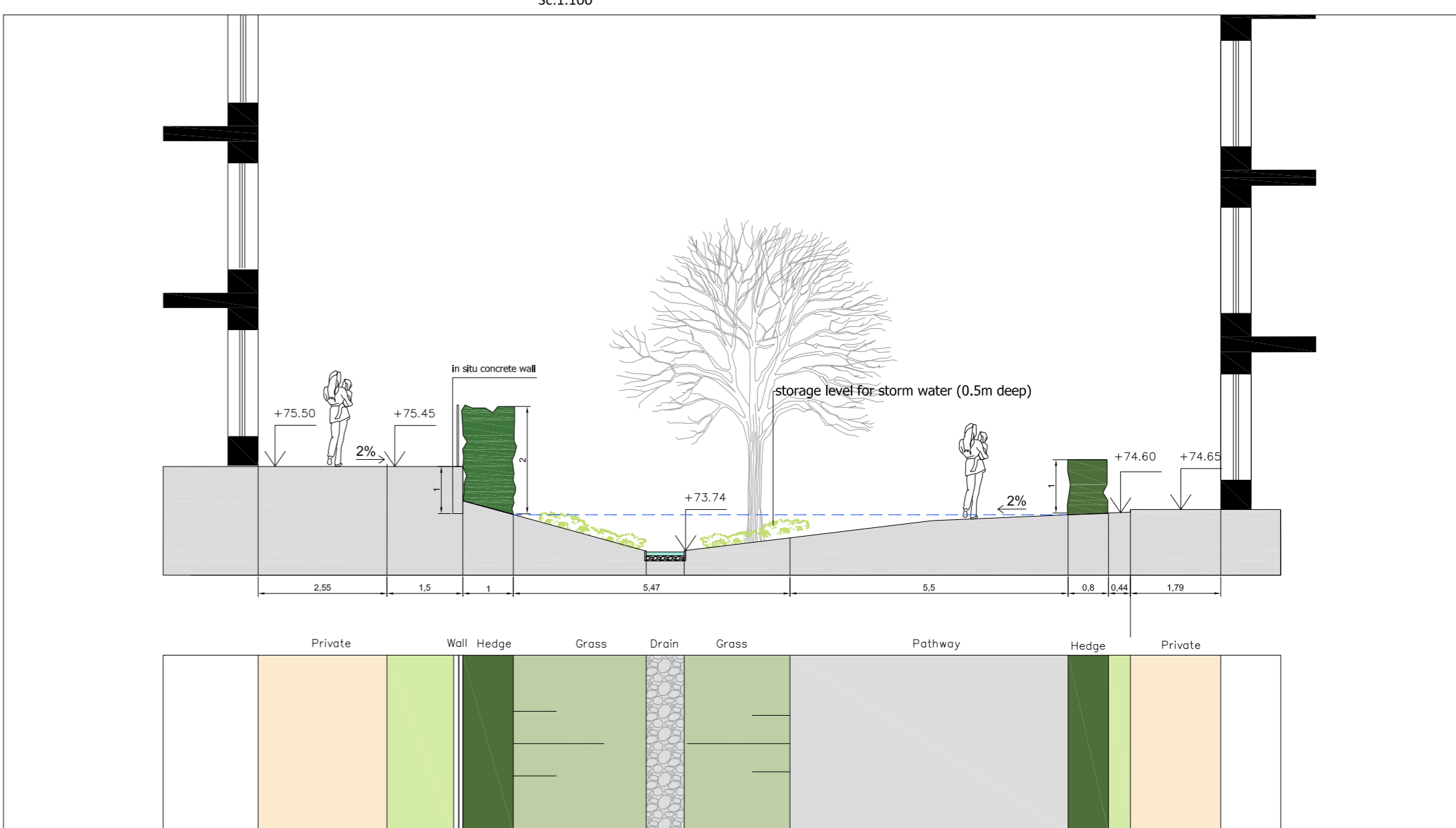
Section A  
Sc:1.100



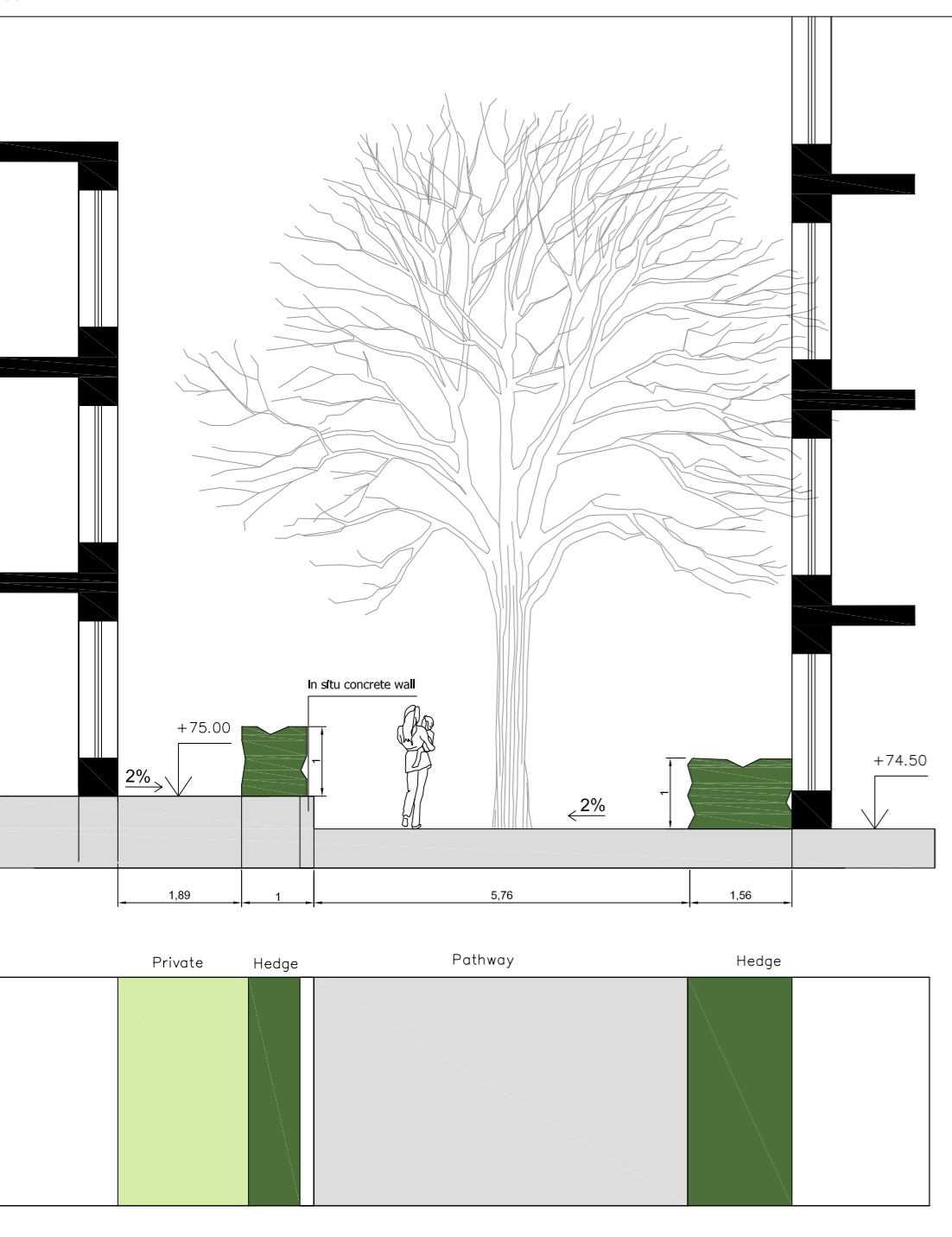
Section B  
Sc:1.100



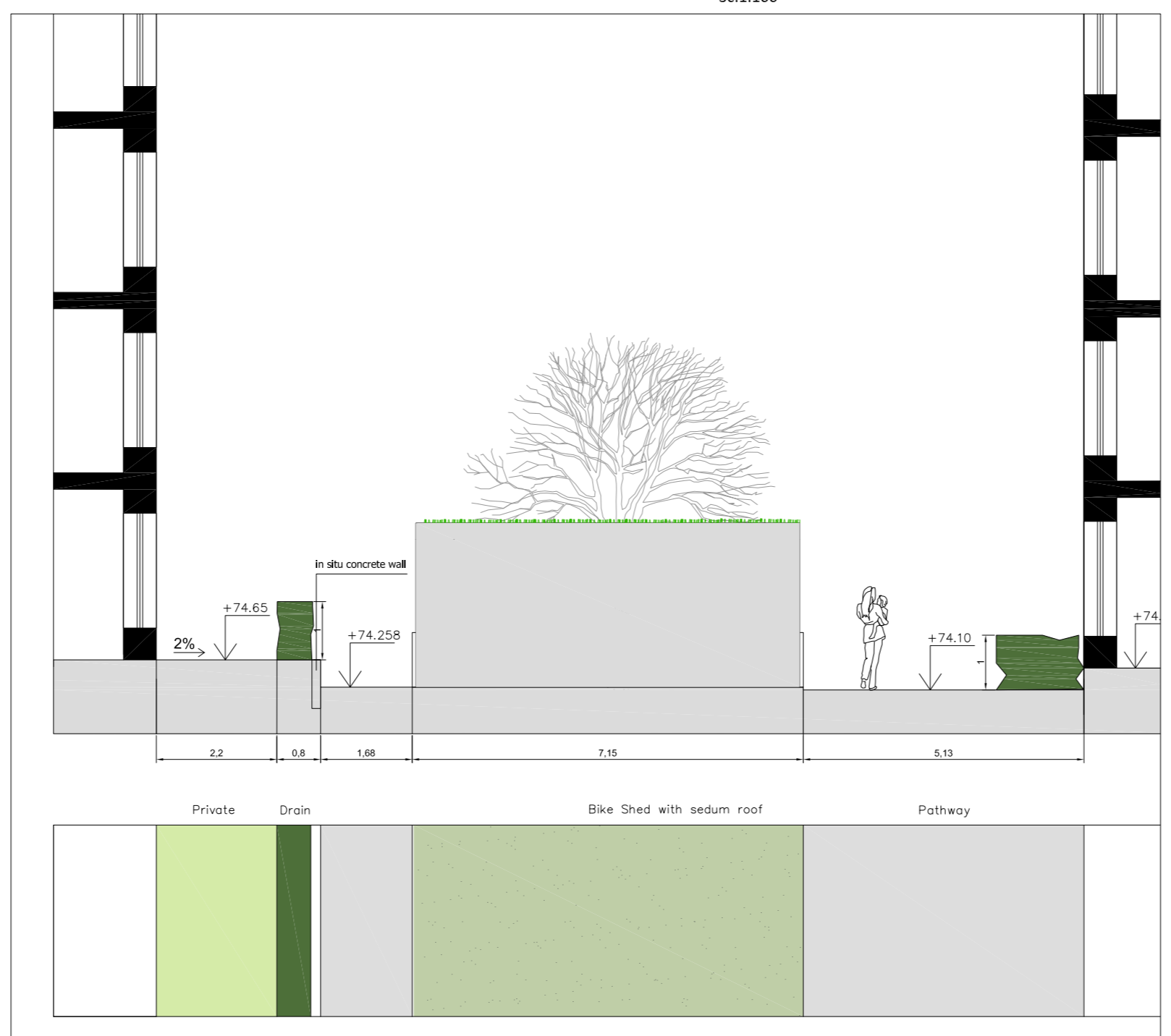
Section C  
Sc:1.100



Section D  
Sc:1.100



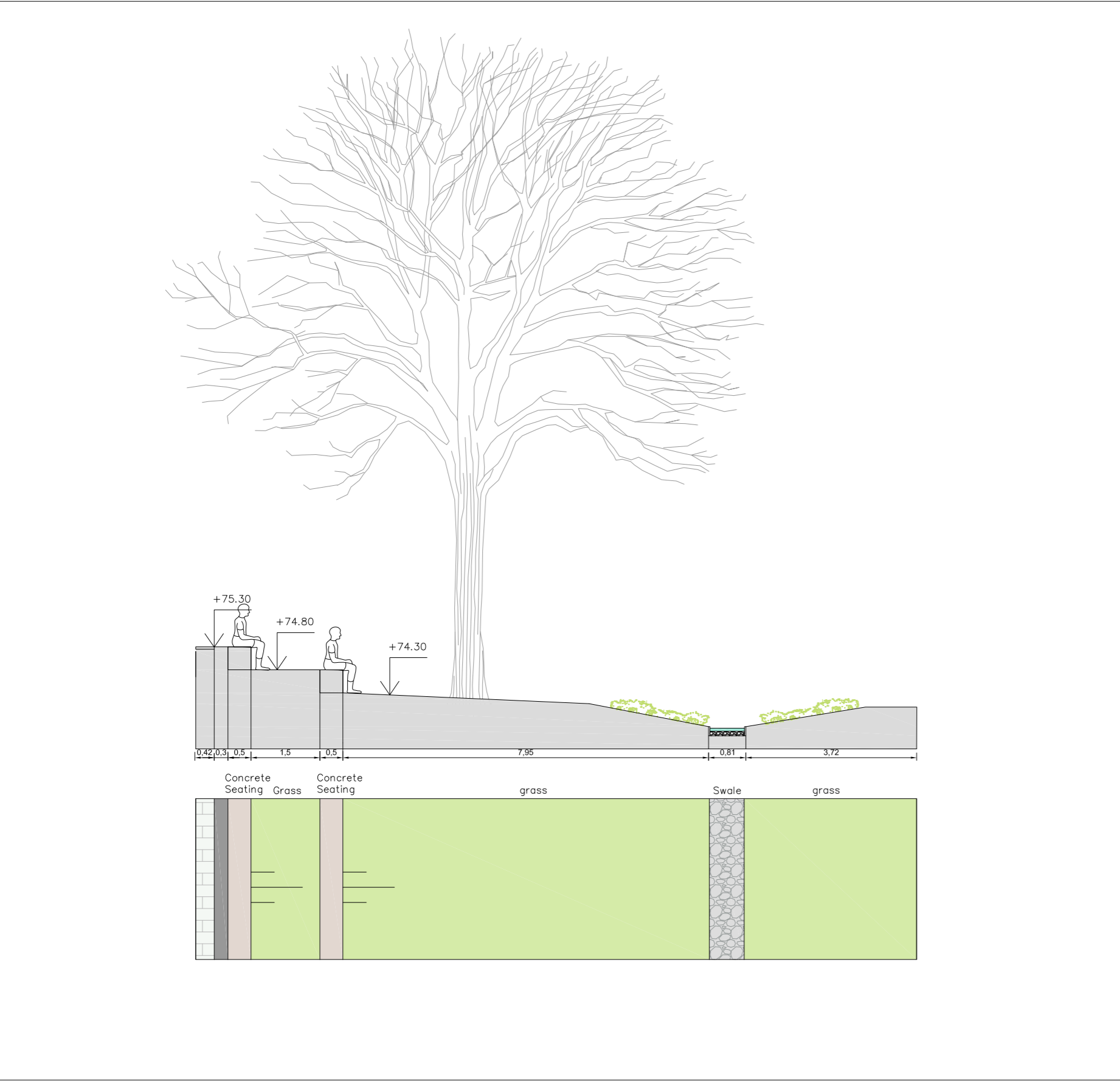
Section E  
Sc:1.100



Section F  
Sc:1.100



Section G  
Sc:1.100



Section H  
Sc:1.100

code	Specification
<b>PAVEMENT AND SURFACE</b>	
S1	Permeable street paving, concrete, dark grey, dim: 300x150x10mm
S2	Concrete footpath paving, type 1, dim: 300x150x10mm, colour silver, mixed evenly with 30% concrete footpath paving type 2, dim: 200x100x10mm
S3	Porous Tarmacadam Asphalt
S4	Grass concrete tiles, dim: (88H) 600x400x100mm, diamond perforations, 40% growing surface.
S5	Blister tactile paving unit profile, buff coloured, dim: 400x80x50mm
S6	Compacted hardcore, with concrete kerbs. Detail pending.
S7	Wood chip or sand surface. Detail pending.
<b>EDGING</b>	
E1	Traffic kerb, Concrete kerb, colour silver, dim: 125x195x155mm
E2	Pedestrian kerb, Concrete kerb, colour silver, dim: 75x90x150mm
E3	Park kerb, Concrete kerb, colour silver dim: (88H) 300x280x100mm
<b>DRAINAGE</b>	
D1	Open gully with castor steel edges, Dim: (88L) 500mm x 400mm, with stainless joints. To be sealed to current level if required, dim: (88H) 700x100x100mm, 8mm thick, every 2m or more to retain drain permanently in place. Detail pending.
D2	Self binding gravel, dim: 100mm down, colour grey. Layer depth 150mm, compacted.
<b>FURNITURE</b>	
F1	Wooden Bench, Birch, Curvira wood, dim: (88H) 300x850x600mm, with backrest. Dim: h: 400mm. Stainless steel legs and arm rest, dim: 50mm thick, 120mm wide, lengths variable. Roof fixed. Detail pending.
F1.1	Plastic table and benches. Detail pending.
F2	Bike stands, Bike stands, stainless steel 316 with a brushed polish finish, roof fixed. Dim: (88H) 850x800mm. Outside diameter 40mm, wall thickness 2.7mm.
F3.1	Concrete seating, dim: 2000x500x100mm. Detail pending.
F3.2	Concrete with integrated wooden seating, dim: 2000x500x100mm. Detail pending.
F3.3	Integrated step Seating, dim: 1000x500x100mm. Detail pending.
<b>PLAY &amp; FITNESS</b>	
P1	Play tree. Detail pending.
P2	Concrete stepping stone. Detail to be provided in next stage.
P3	Play equipment, wood, parours (approx 2m high). Detail pending.
P4	Play equipment, wood, platforms with slide (approx 3m high). Detail pending.
P5	Play equipment, wood, tree hut with rope bridge (approx 4m high). Detail pending.
<b>HEDGES</b>	
H1	Mix (of 60% Crataegus, 20% Prunus spinosa and 20% Acer campestre). See hedge and planting detail.
H2	Fagus sylvatica. See hedge and planting detail.
<b>GRASSES AND PERENNIALS INCLUDING GROUND COVER</b>	
G1	Grass
G2	Edenwide vegetation
G2.1	Pollinator vegetation
G3	Proposed collective foot garden
<b>STRUCTURAL TREES MEDIUM</b>	
T1	Acer campestre 'Eryik'
T2	Liquidambar styraciflua Walpole
T3	Quercus petraea
T4	Quercus robur
<b>STRUCTURAL TREES MEDIUM FOR COURTYARDS</b>	
T5	Prunus ser: 'Shirofugen'
T6	Pyrus catteriana 'Charicleer'
T7	Malus baccata 'Street Parade'



**REDscape Landscape & Urbanism**  
26 Upper Pembroke Street, Dublin 2, Ireland

t: +353 1 6401940  
e: info@redscape.ie

scale 1.100	project MAYESTON_S179A	2214	
format A1	client FINGAL_COUNTY_COUNCIL		
date 220620	subject SECTIONS		
changed 231026	drawing number RED2214.02.S01		