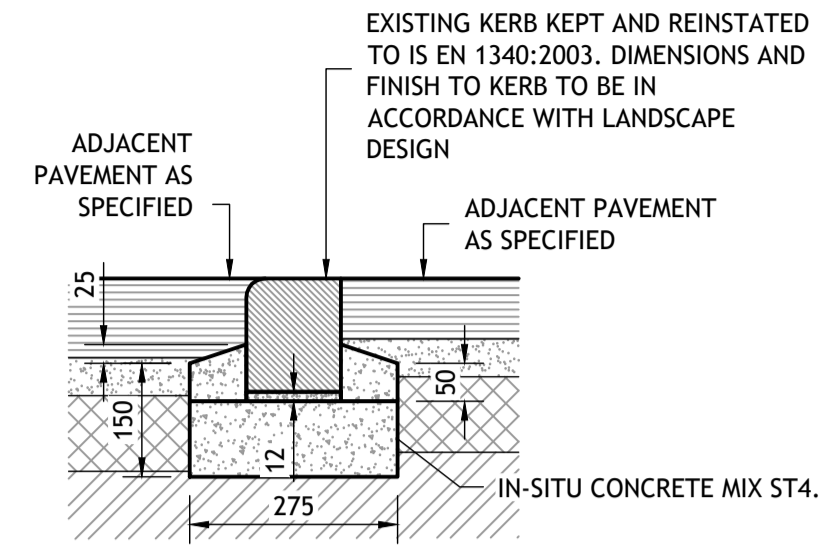
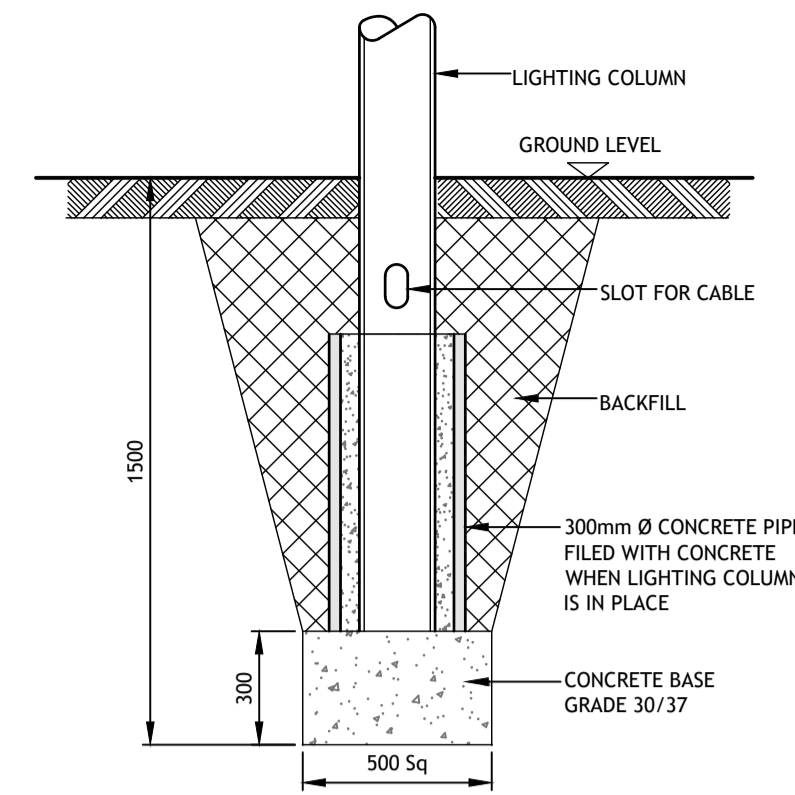


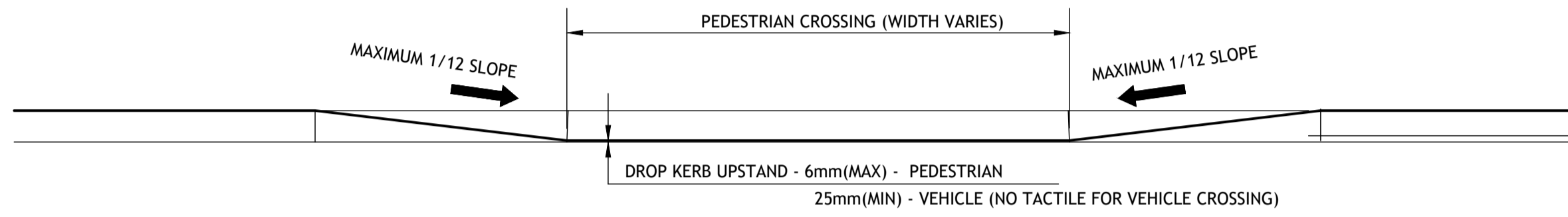
**1. TYPICAL NATURAL STONE KERB/UPSTAND DETAIL**  
NOT TO SCALE



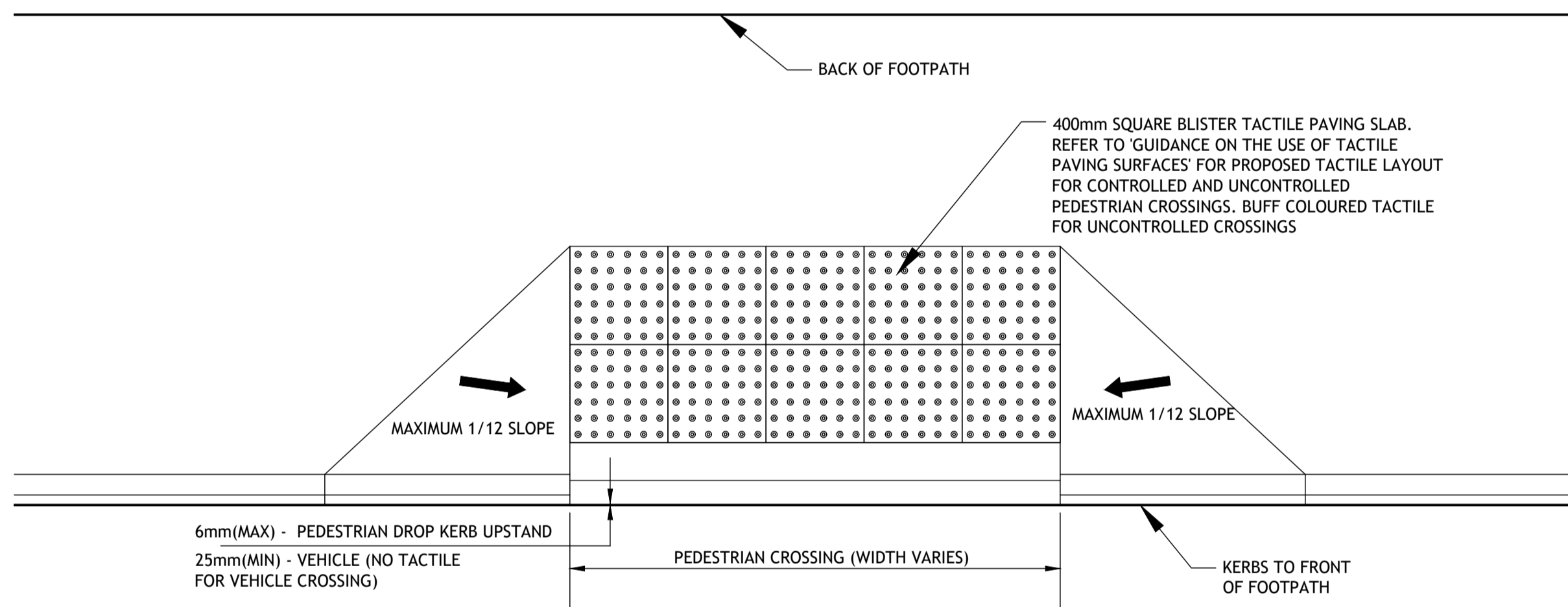
**2. TYPICAL FLUSH KERB DETAIL**  
NOT TO SCALE



**3. LIGHTING/BEACON/CCTV COLUMN BASE DETAIL**  
SCALE 1:20



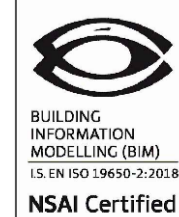
**6. TYPICAL ELEVATION OF DROPPED KERB (DK)**  
SCALE: 1:20



**6. TYPICAL PLAN OF DROP KERB (DK)**  
N.T.S

© PUNCH Consulting Engineers

This drawing and any design hereon is the copyright of the Consultants and must not be reproduced without their written consent. All drawings remain the property of the Consultants. Figured dimension only to be taken from this drawing. Consultants to be informed immediately of any discrepancies before work proceeds.



Rev	Amendment	By	Date	Rev	Amendment	By	Date
C01	PLANNING ISSUE	PF	2023-04-06				

Client:  
**Fingal County Council**



Project: PUBLIC REALM IMPROVEMENTS FOR A PEDESTRIANISED NEW STREET					
Title: ROAD DETAILS					
Drawn: DAP	Date drawn: APRIL 2023	Technician Check: DAP	Engineer Check: MCD	Approved: MKD	
Project No: 222126	Model Ref: 222126-PUNCH-XX-XX-M2-C-0550	Drawing Status: A01			
Scale as indicated	Document No: 222126-PUNCH-XX-XX-DR-C-0550	Revision No: C01			