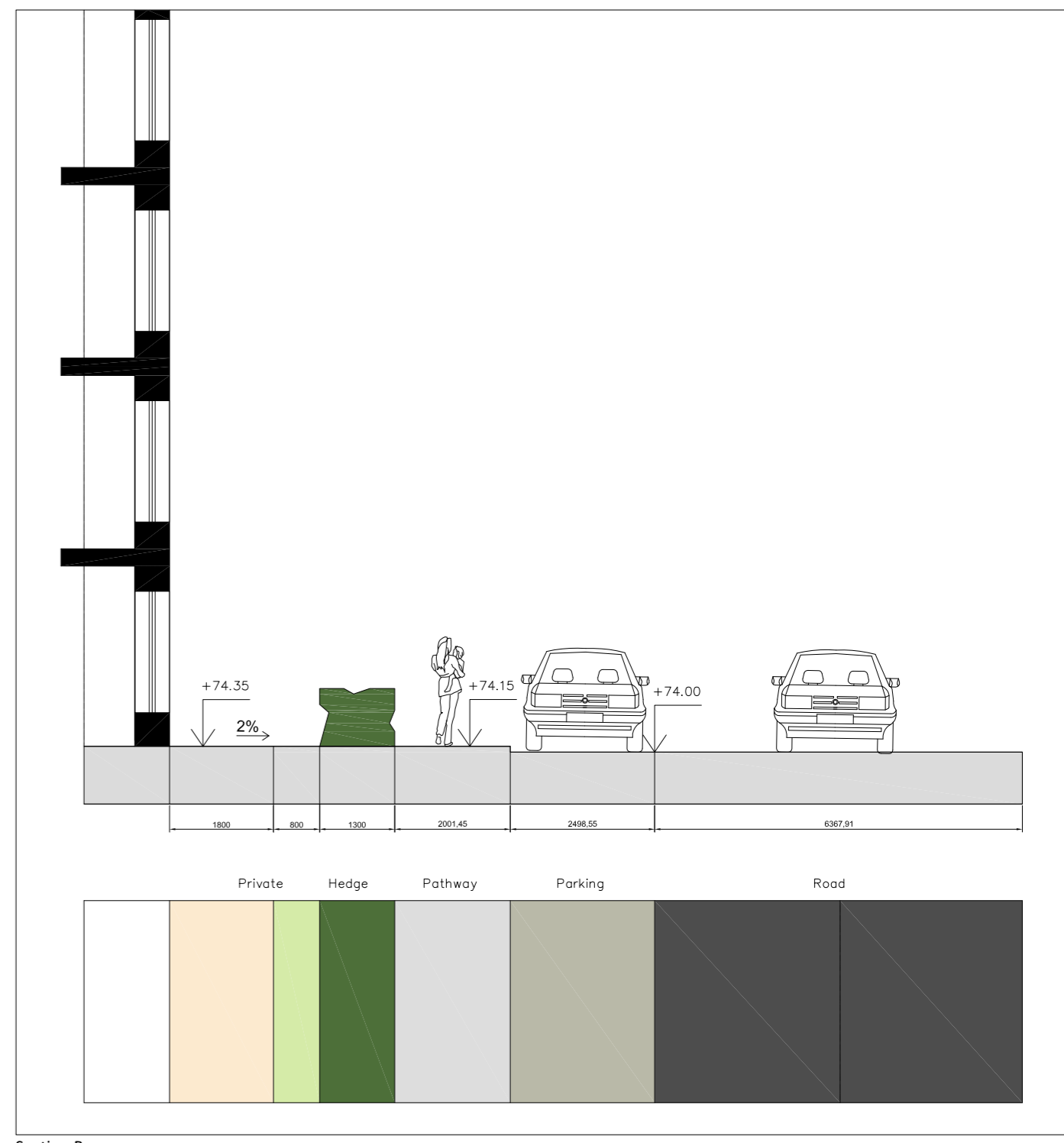
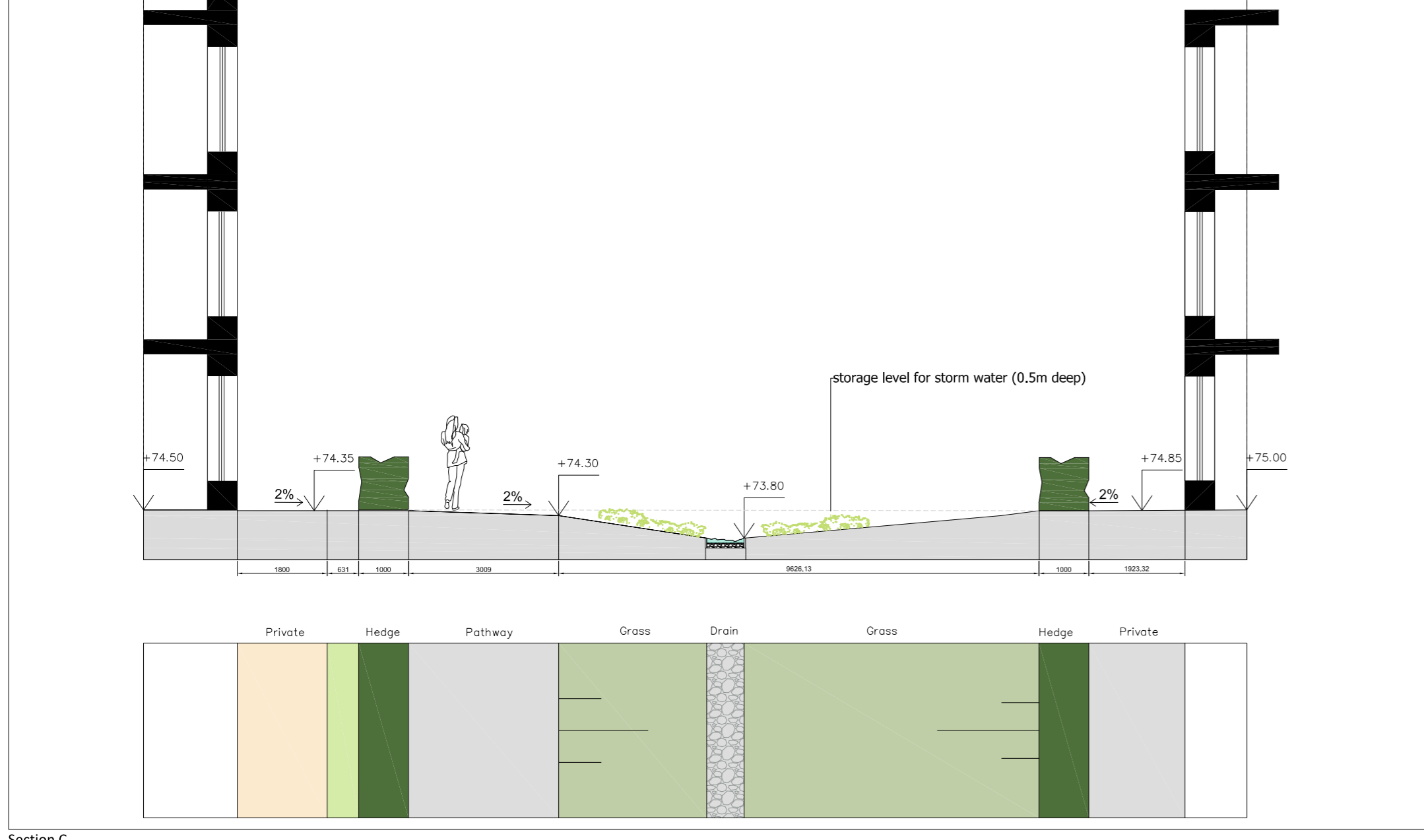


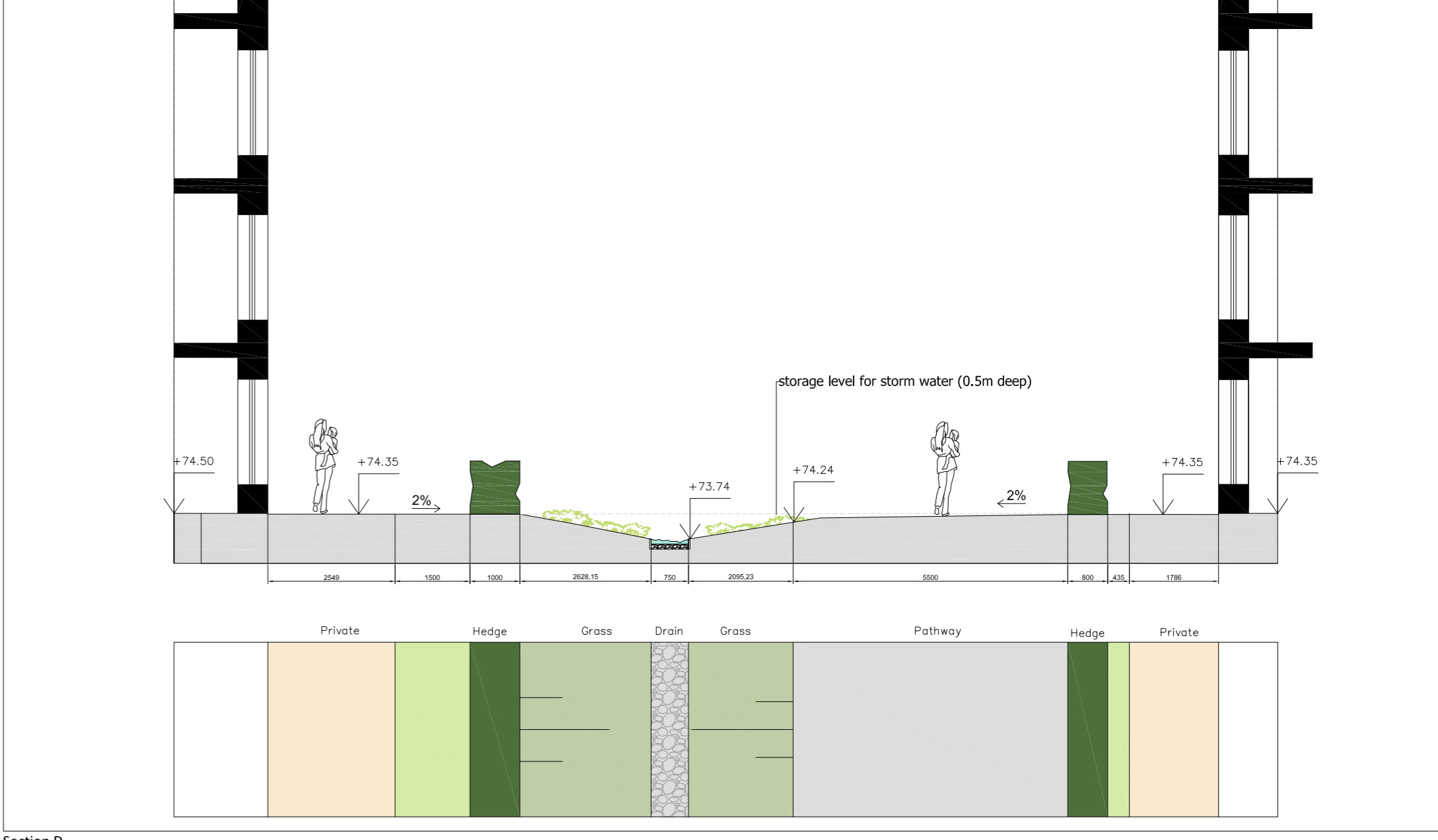
Section A
Sc:1.100



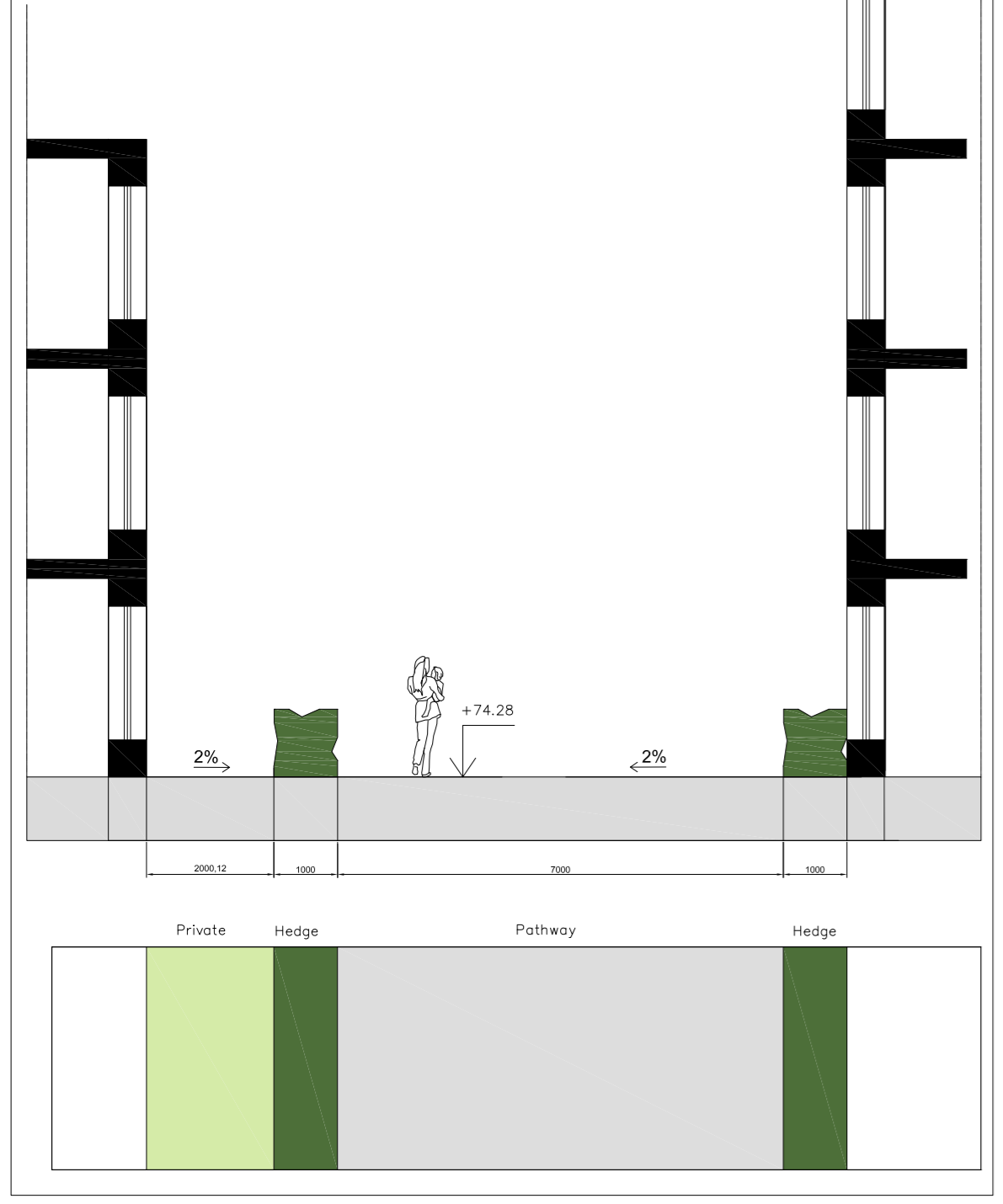
Section B
Sc:1.100



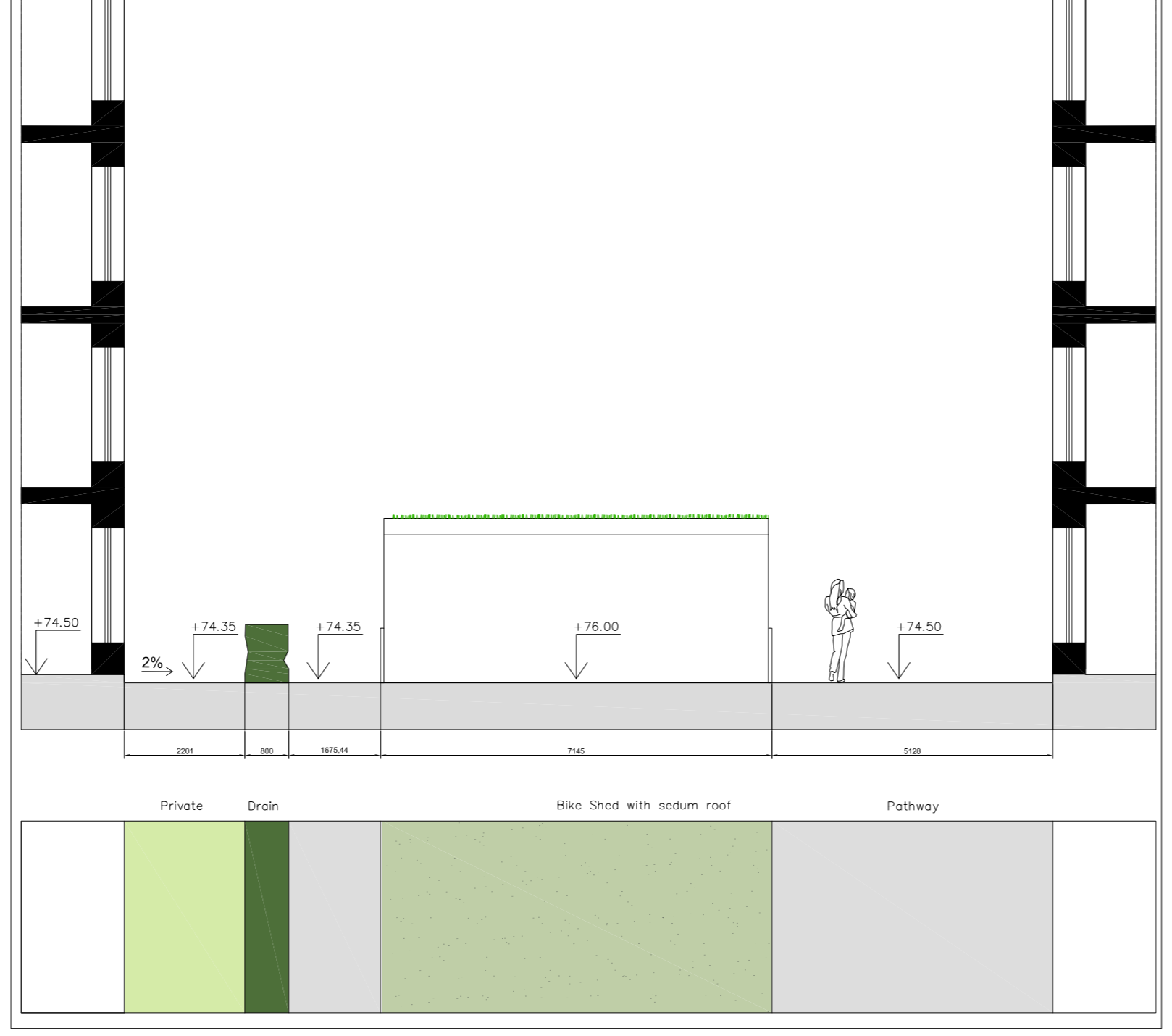
Section C
Sc:1.100



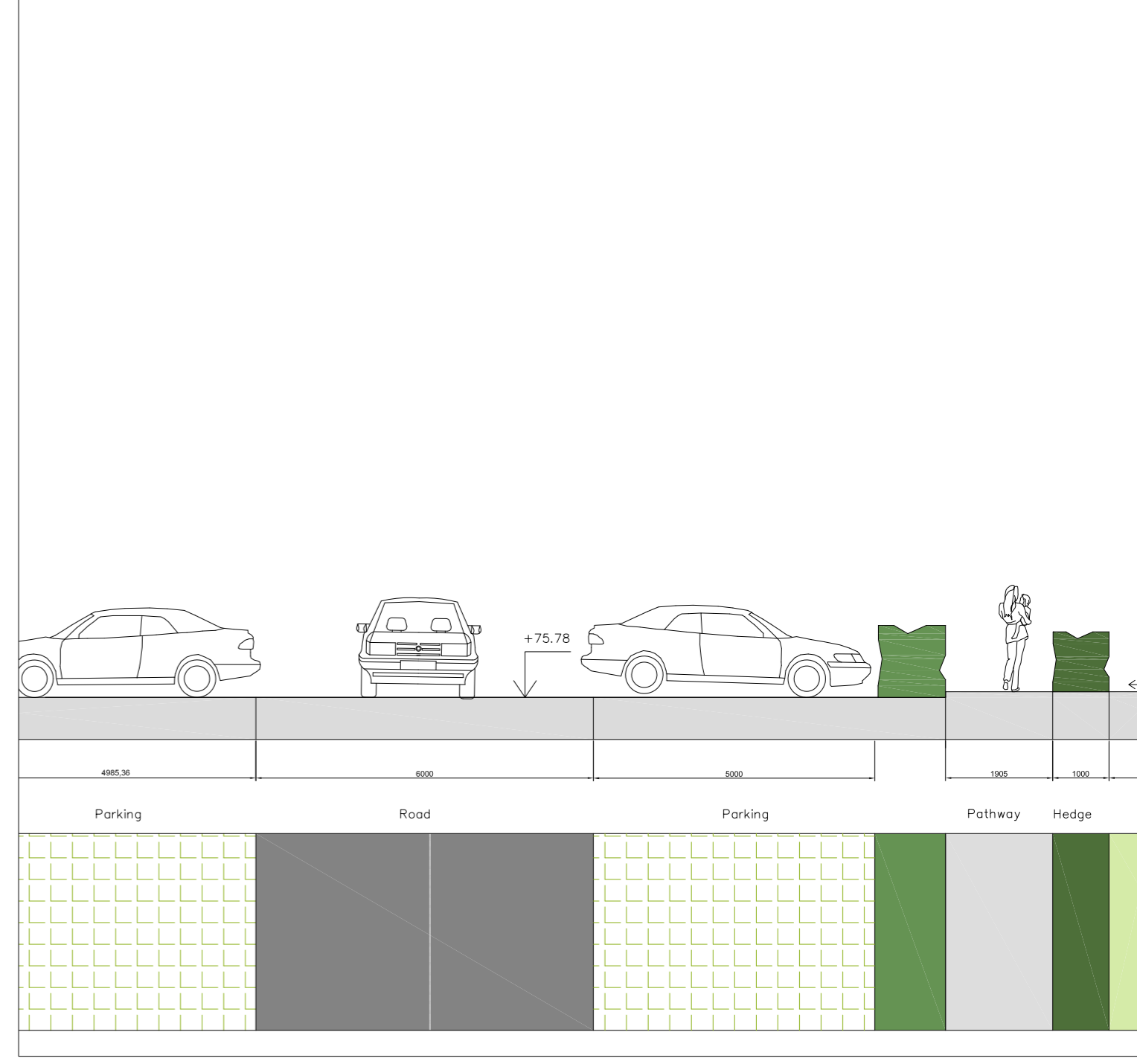
Section D
Sc:1.100



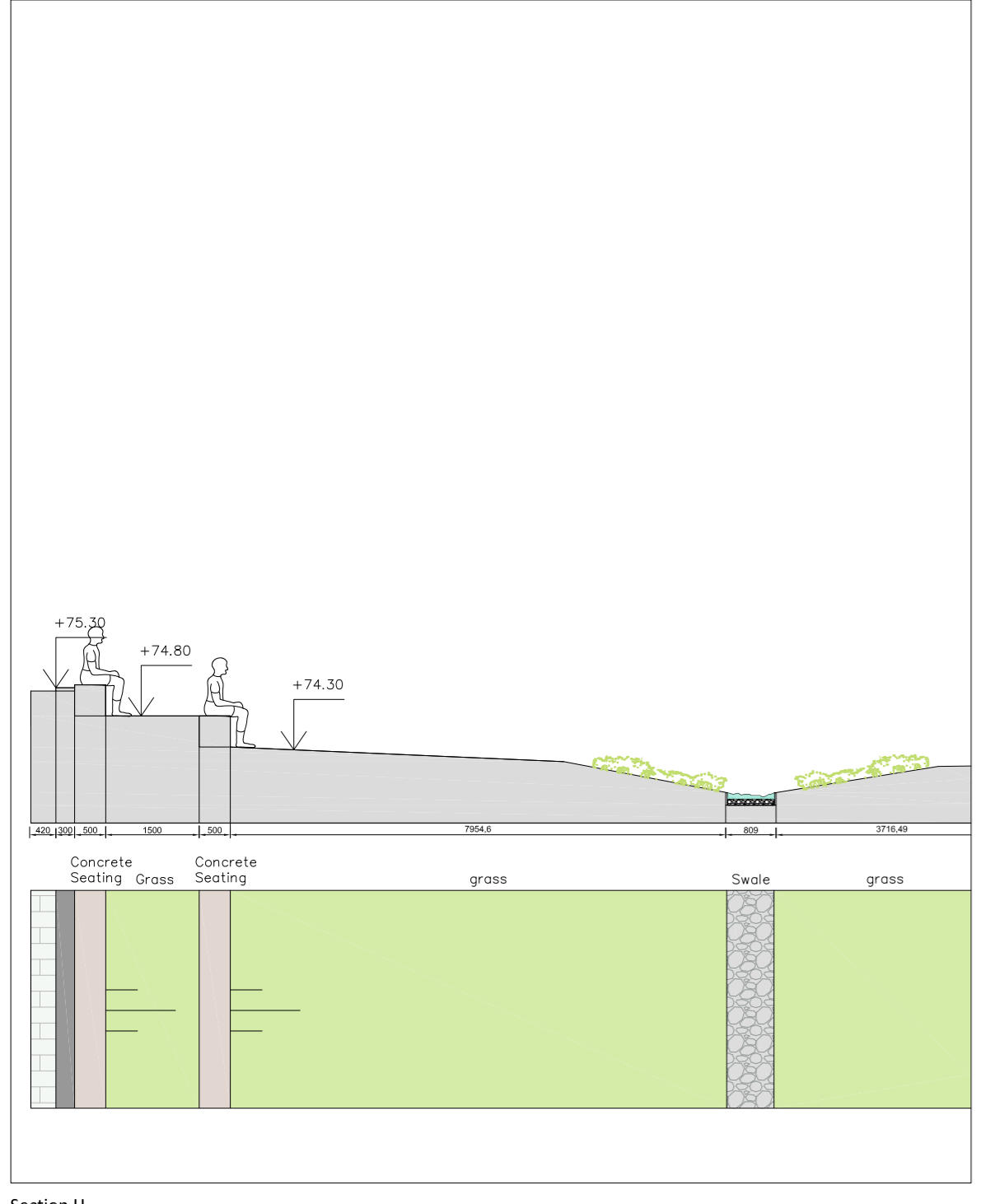
Section E
Sc:1.100



Section F
Sc:1.100

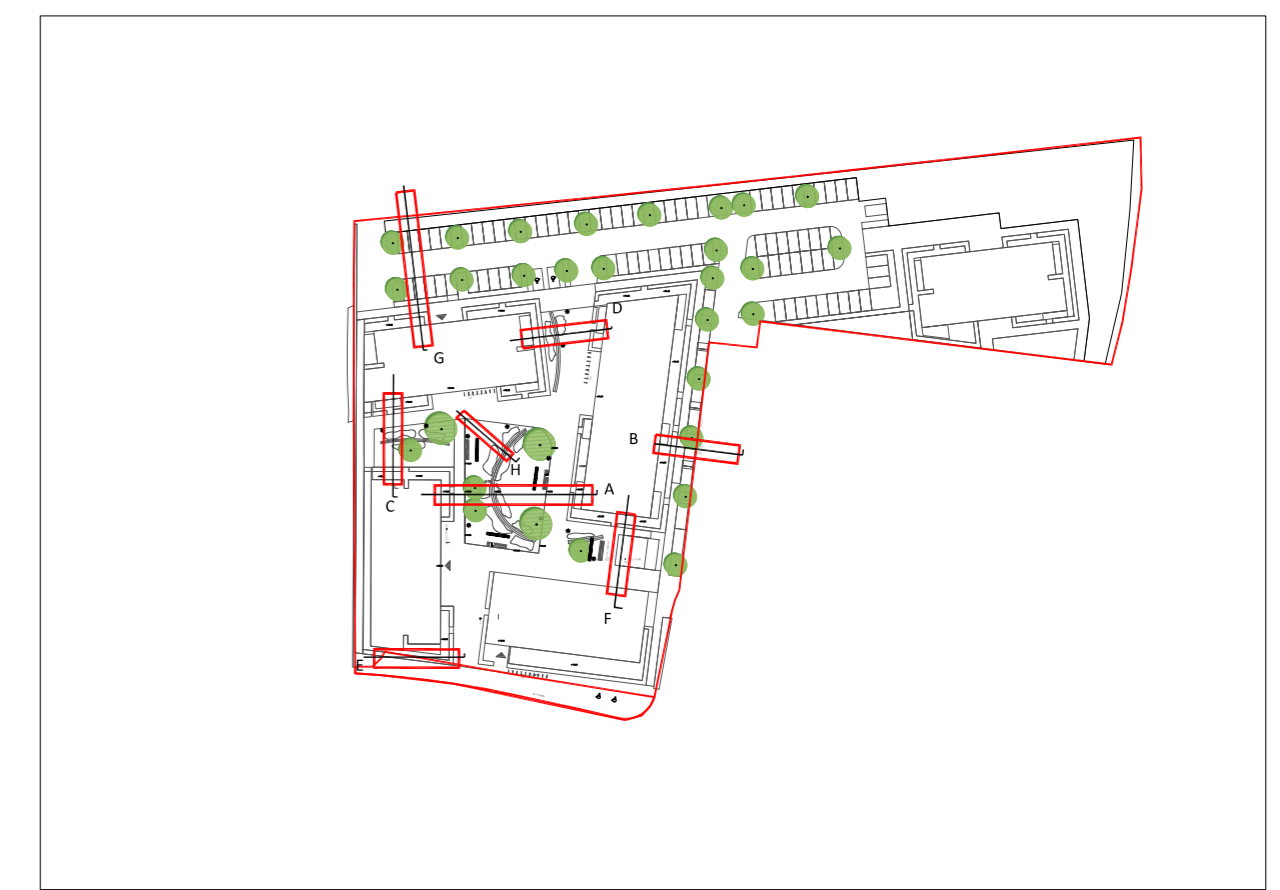


Section G
Sc:1.100



Section H
Sc:1.100

code	Specification
Pavement and surfacing (to architect's and engineers specifications)	
S1	Permeable vehicular street paving
S2	Permeable pedestrian paving
S3	Grass pavers
S4	Grasscrete
S5	Wood chip or sand surface
Drainage (to architect's and engineers specifications)	
D1	Open gull drain
D2	Surface water drain
Furniture (to landscape architect's specifications)	
F1	Wooden bench (with backrest)
F2	Bike stands
F3	Bollards
F4	Concrete step (for sitting)
Lighting & music	
L1	Street lighting 15ft
L2	Orientation lighting
Play, fitness, assembly	
P1	Natural play area 15ft
P2	Sleeping annex
P3	Adventure play area
P4	Fitness area
P5	Community garden
P6	Campsite for managers
HEDGES	
H1	High hedgerow
H2	Mix of 80% Cotoneaster, 20% Prunus spinosa and 20% Acer campestre
GRASSES AND PERENNIALS INCLUDING GROUND COVER	
G1	Grass
G2	Moisture vegetation
G3	Mulch
STRUCTURAL TREES MEDICAL	
T1	Acer campestre 'York'
T2	Tilia cordata 'Worplewood'
STRUCTURAL TREES MEDICAL FOR PARKS	
T3	Quercus petraea
T4	Quercus robur
STRUCTURAL TREES MEDICAL FOR COURTYARDS	
T5	Prunus spinosa 'Spiralform'
T6	Prunus laurocerasus 'Shanicleaf'
T7	Malus baccata 'Street Parade'
WOODLAND PLANTING	
T8	Woodland planting mix of native species



scale 1.100	project FINGLAS_MAYESTON_GREEN	2214	
format A1	client OBB_ARCHITECTS		
date 220620	subject SECTIONS		
changed 230126	drawing number RED2214.02.S01		