



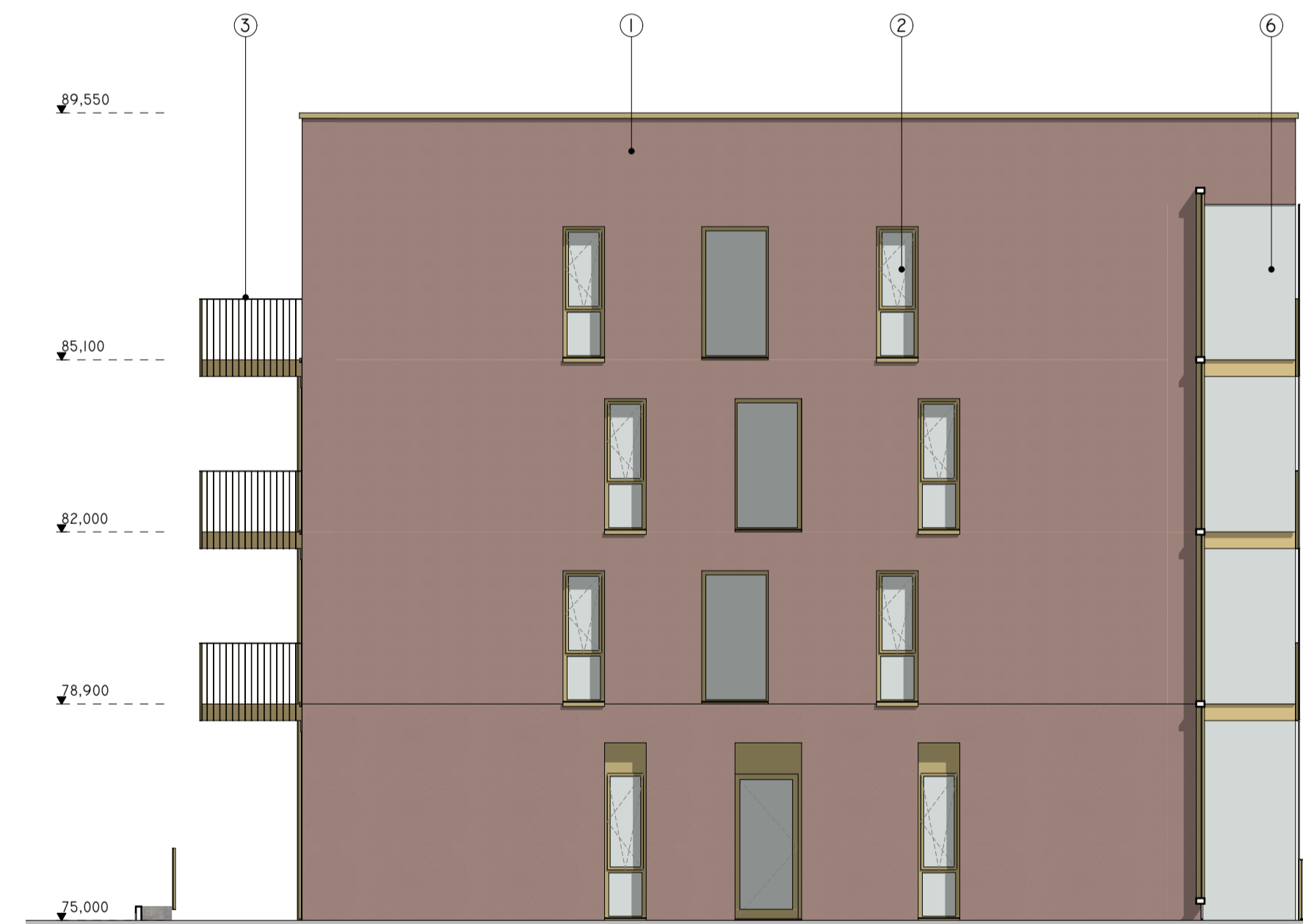
E-01 BLOCK D EAST ELEVATION I-100  
P305 1:100



E-02 BLOCK D SOUTH ELEVATION I-100  
P305 1:100



E-03 BLOCK D WEST ELEVATION I-100  
P305 1:100



E-04 BLOCK D NORTH ELEVATION I-100  
P305 1:100

- ① MINERAL PAINTED SMOOTH RENDER FINISH
- ② POWDER COATED TRIPLE GLAZED WINDOWS
- ③ POWDER COATED METAL BALUSTRADE
- ④ POWDER COATED OPAL GLAZED BALUSTADE
- ⑤ WINTER GARDEN
- ⑥ SCREENED BALCONY
- ⑦ POWDER COATED CLADDING TO ENTRANCE CANOPY
- ⑧ ACOUSTIC BALUSTRADE TO LOW LEVEL WINDOW

REVISION	NOTE	DATE
CLIENT:	FINGAL COUNTY COUNCIL	
PROJECT:	MAYESTON, POPPINTREE	
DRAWING:	BLOCK D ELEVATIONS I-100	
DATE:	26/01/2023	
SCALE:	A1 @ 1:100	
JOB NO.:	21.17 MAY	

obrain:beary

O'Brain Beary Architects  
 C1 The Steelworks Foley Street Dublin 1  
 t+353 1 855 9040  
 info@obrainbeary.ie www.obrainbeary.ie

DRAWING NO. REV:

P305