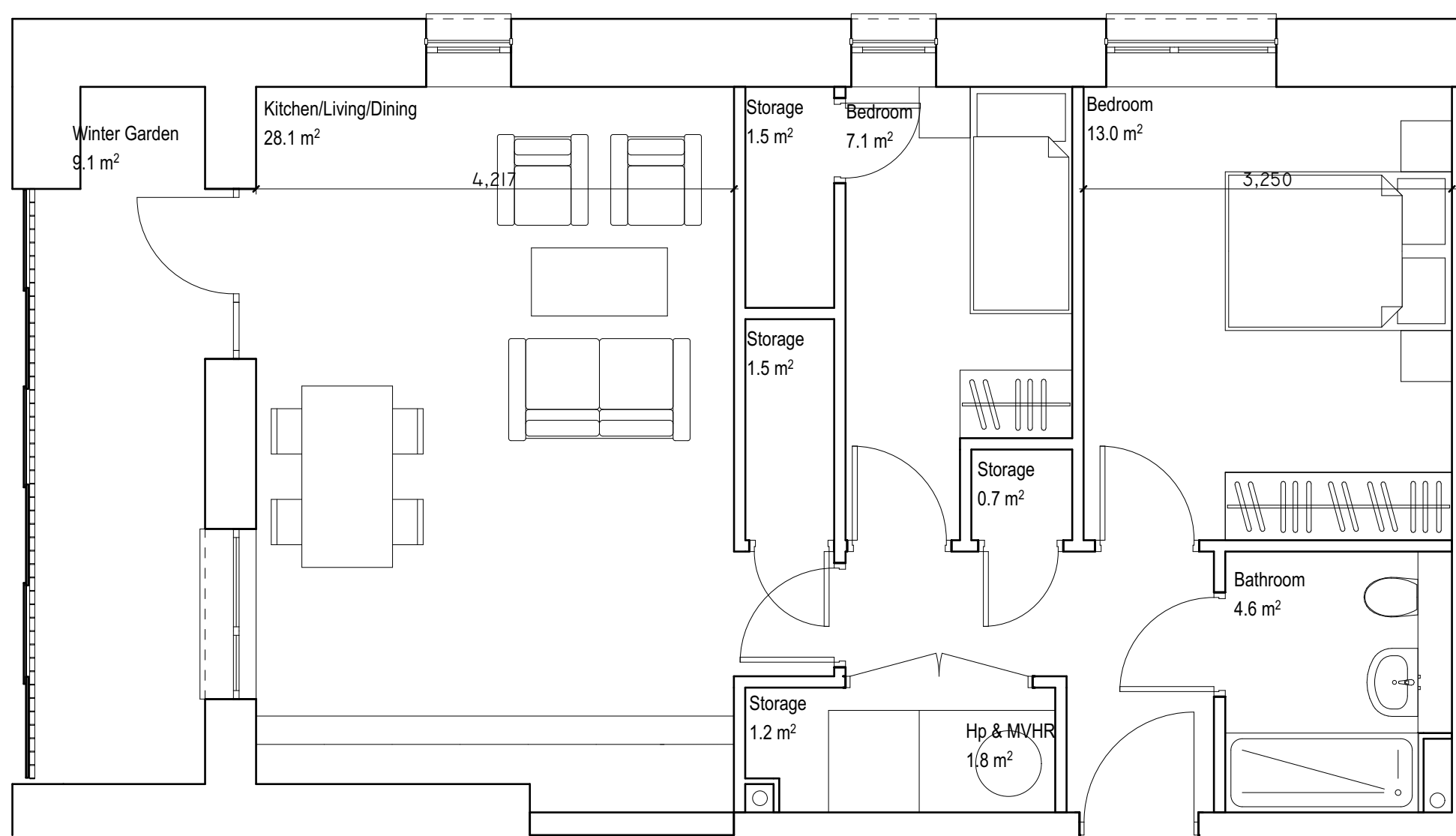
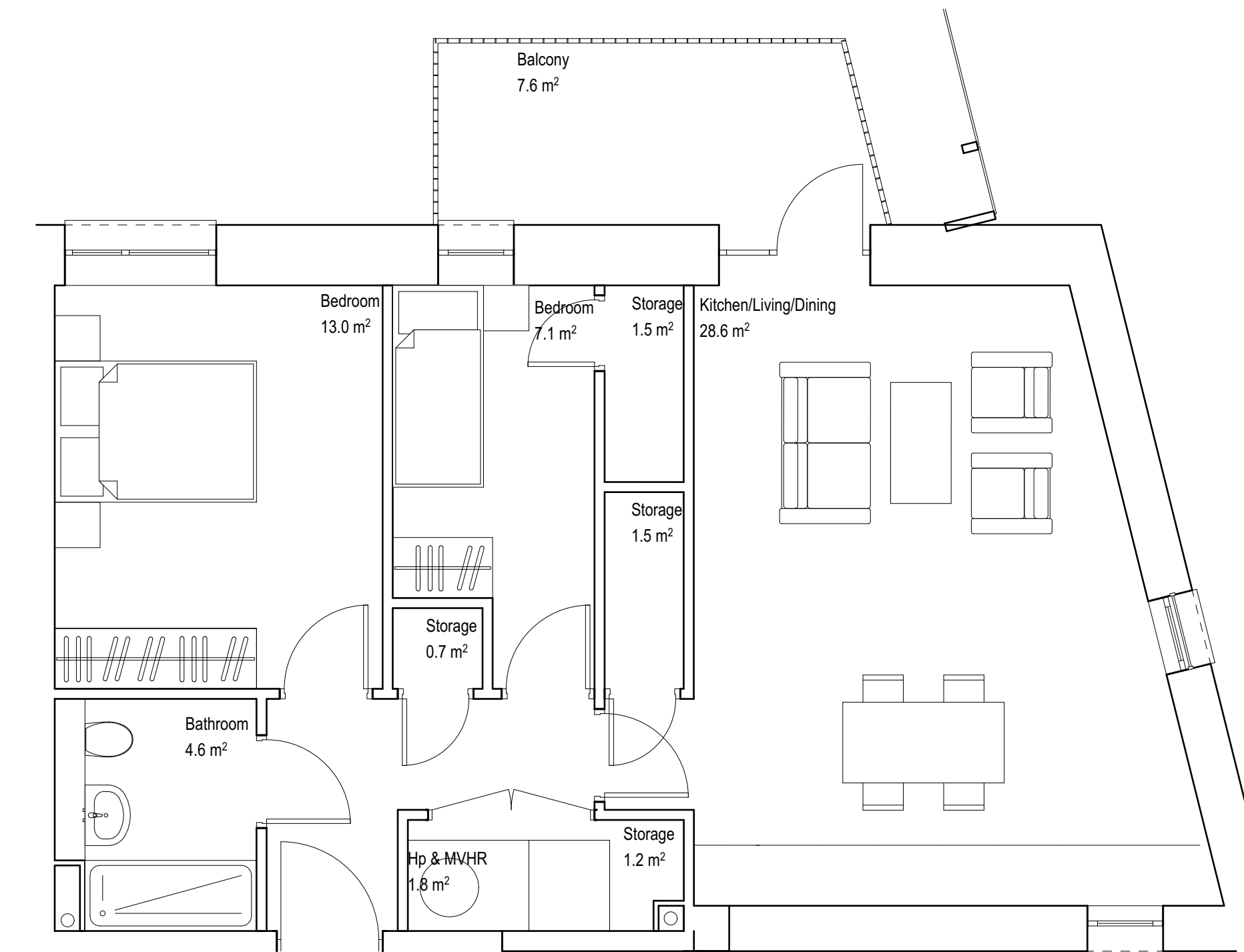


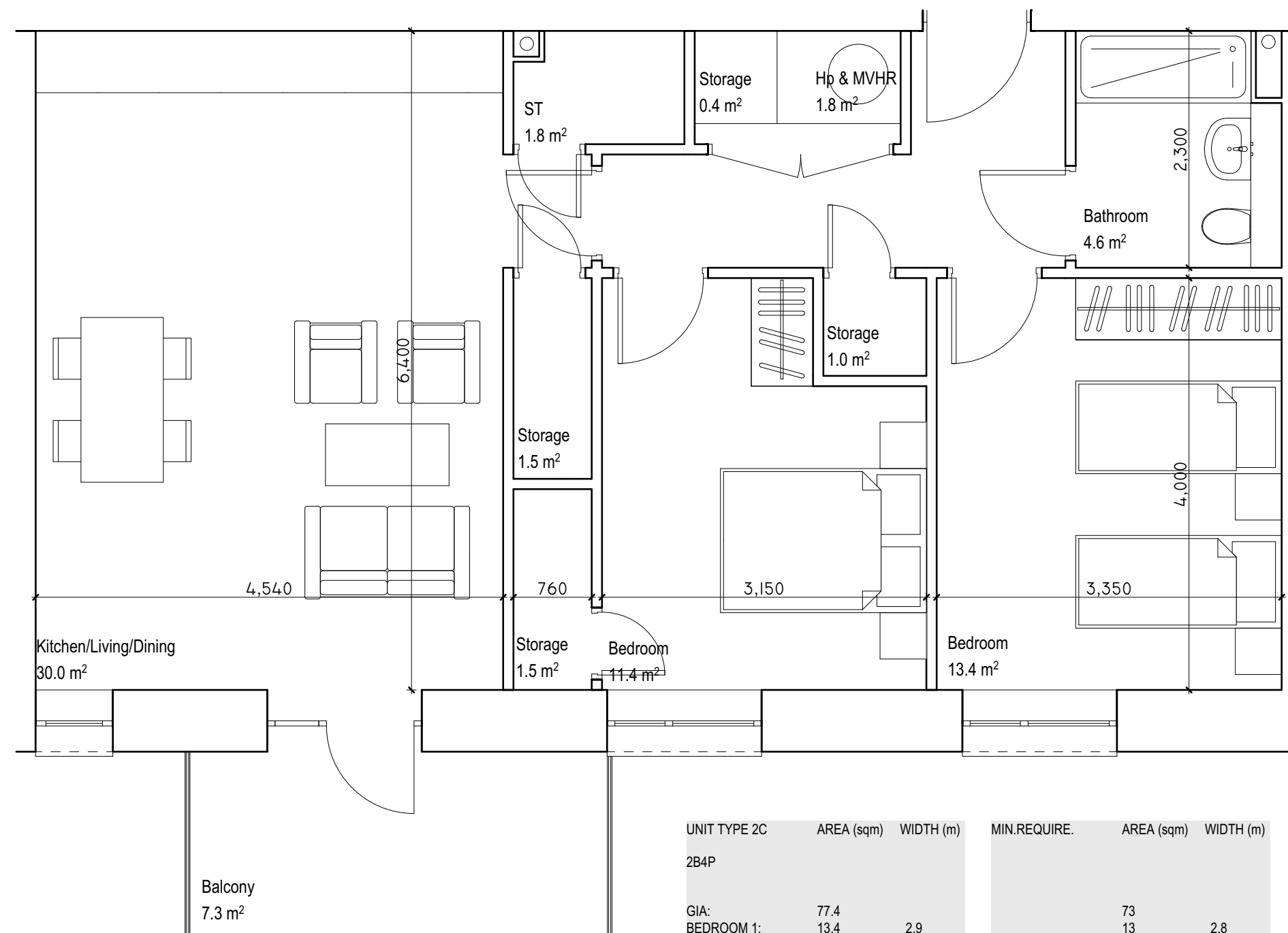
UNIT TYPE 1A	AREA (sqm)	WIDTH (m)	MIN REQUIRE	AREA (sqm)	WIDTH (m)
2BP					
GIA:	50.6	3.1		45	2.8
BEDROOM 1:	11.5			11.4	
BEDROOM 2:	24.1			23	
K.L.D.:	3			2	
STORAGE:	7.1			5	
P.A.S.:					



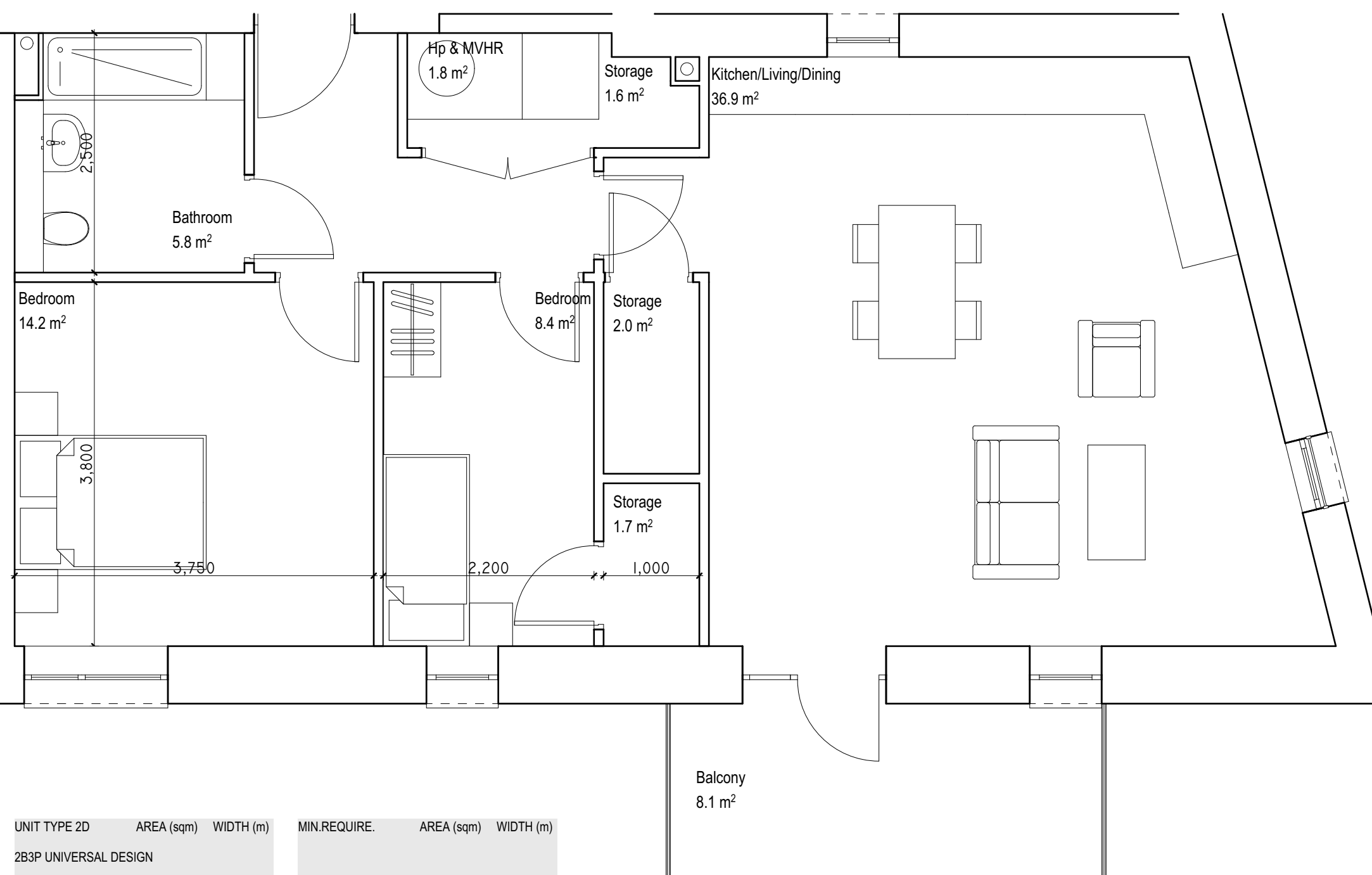
UNIT TYPE 2A	AREA (sqm)	WIDTH (m)	MIN REQUIRE	AREA (sqm)	WIDTH (m)
2BP					
GIA:	66.9			63	
BEDROOM 1:	13	3.2		13	2.8
BEDROOM 2:	7.1	2.1		7.1	2.1
K.L.D.:	28.1			28	
STORAGE:	9			6	
P.A.S.:	5.1			6	



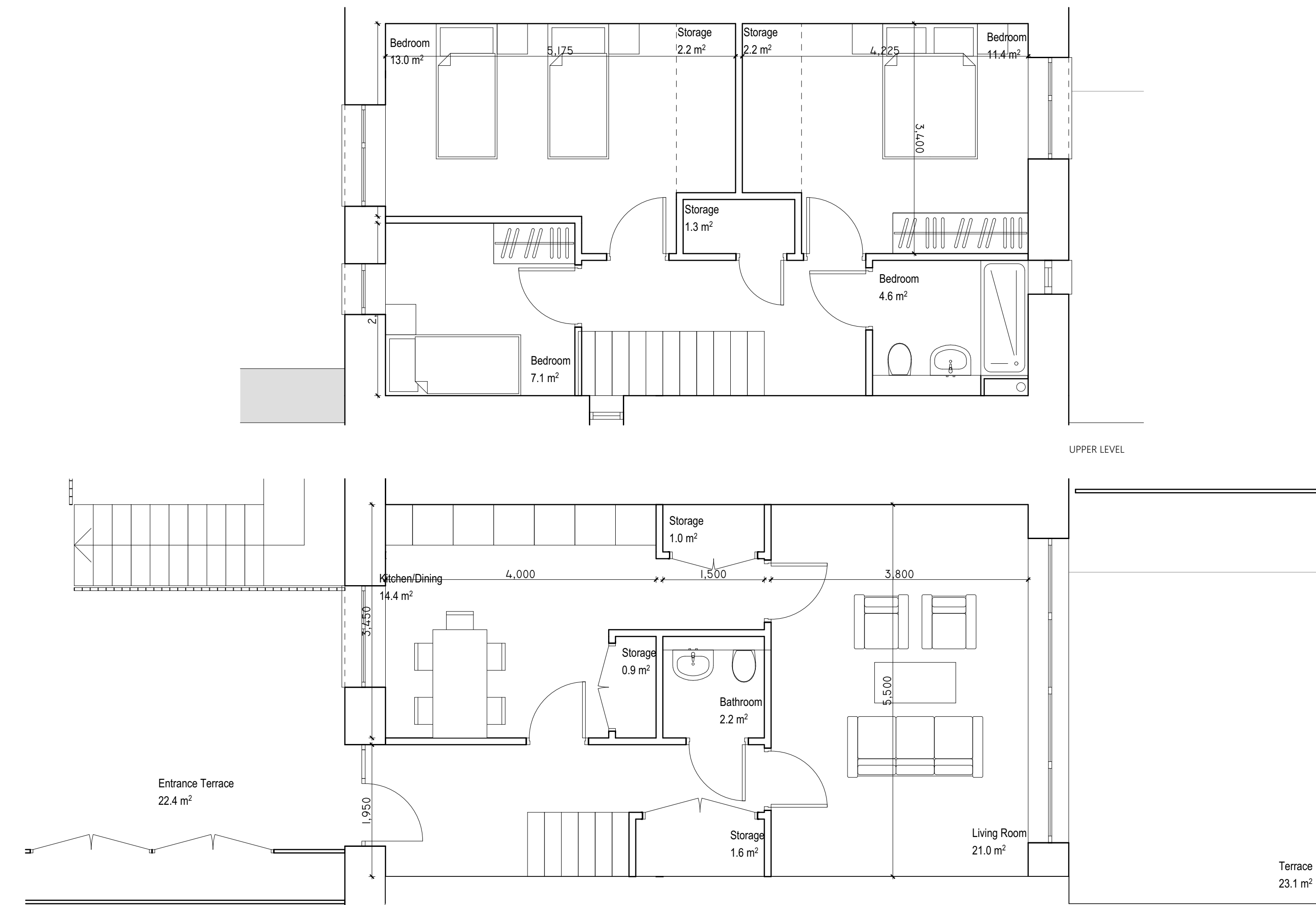
UNIT TYPE 2B	AREA (sqm)	WIDTH (m)	MIN REQUIRE	AREA (sqm)	WIDTH (m)
2BP					
GIA:	66.1			63	
BEDROOM 1:	13	3.2		13	2.8
BEDROOM 2:	7.1	2.1		7.1	2.1
K.L.D.:	28.6			28	
STORAGE:	6.0			6	
P.A.S.:	7.6			6	



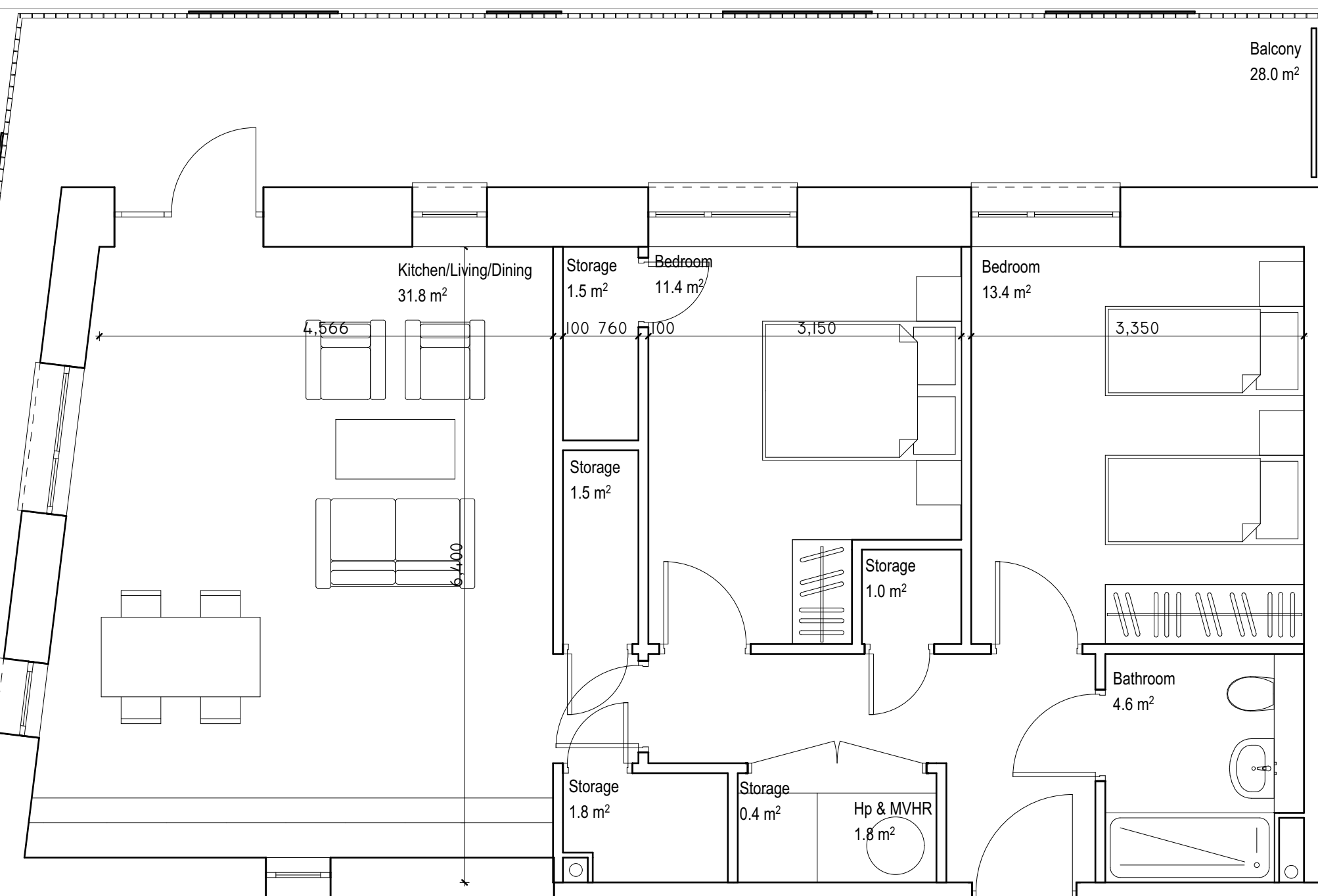
UNIT TYPE 2C	AREA (sqm)	WIDTH (m)	MIN REQUIRE	AREA (sqm)	WIDTH (m)
2BP					
GIA:	77.4			73	
BEDROOM 1:	13.4	2.9		13	2.8
BEDROOM 2:	11.4	3.3		11	2.8
K.L.D.:	30			30	
STORAGE:	6.2			6	
P.A.S.:	7.3			6	



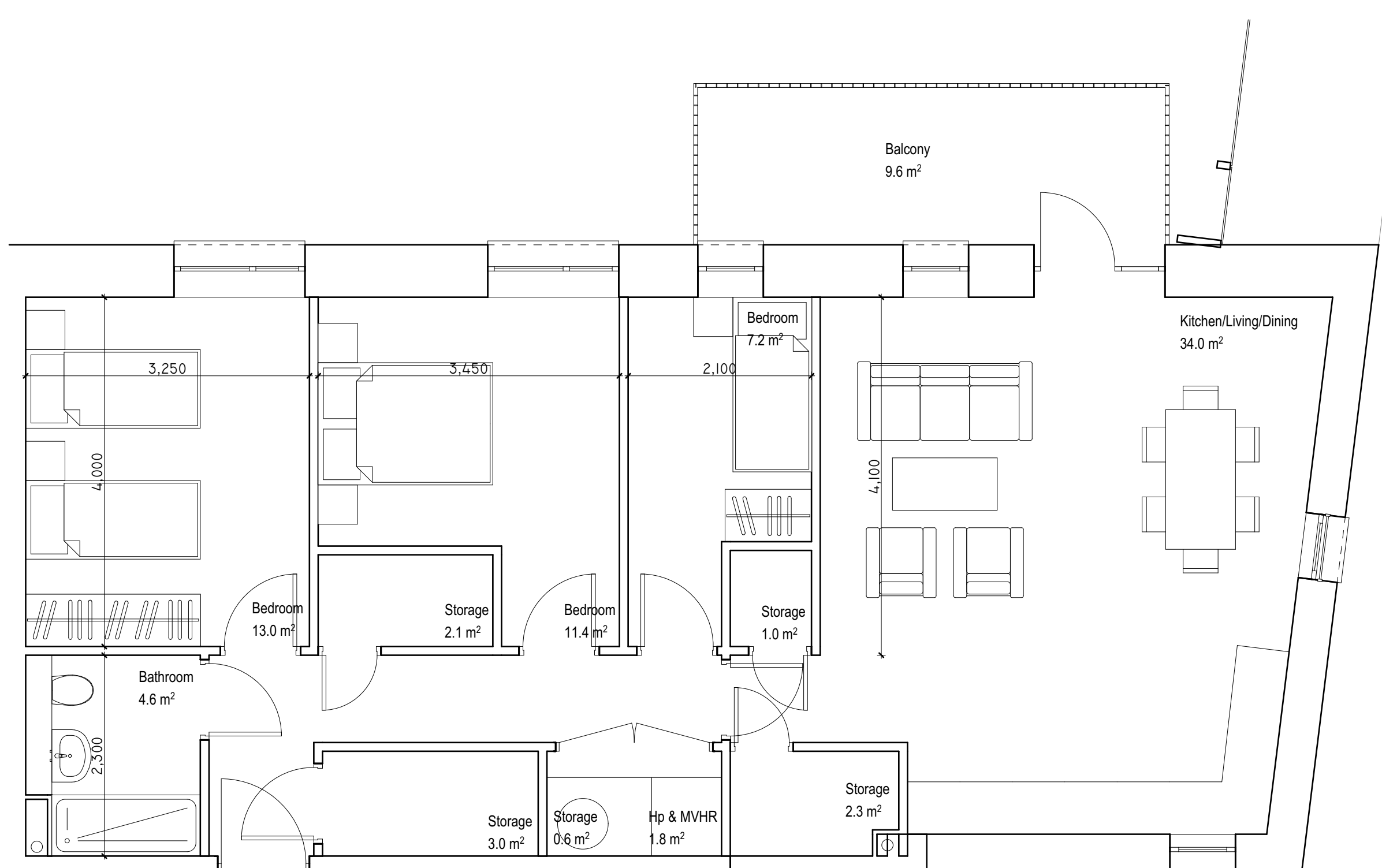
UNIT TYPE 2D	AREA (sqm)	WIDTH (m)	MIN REQUIRE	AREA (sqm)	WIDTH (m)
2BP UNIVERSAL DESIGN					
GIA:	81.7			63	
BEDROOM 1:	14.2	3.3		13	2.8
BEDROOM 2:	8.4	3.1		7.1	2.1
K.L.D.:	36.9			28	
STORAGE:	6.3			6	
P.A.S.:	8.1			6	



UNIT TYPE 2E	AREA (sqm)	WIDTH (m)	MIN REQUIRE	AREA (sqm)	WIDTH (m)
2BP					
GIA:	104.4			90	
BEDROOM 1:	13	3.4		13	2.8
BEDROOM 2:	11.4	2.8		11.4	2.8
BEDROOM 3:	7.1	2.5		7.1	2.1
K.L.D.:	36.4			34	
STORAGE:	6.2			9	
P.A.S.:	22			9	



UNIT TYPE 2F	AREA (sqm)	WIDTH (m)	MIN REQUIRE	AREA (sqm)	WIDTH (m)
2BP					
GIA:	78.8			73	
BEDROOM 1:	13.4	3.3		13	2.8
BEDROOM 2:	11.4	3.1		11.4	2.1
K.L.D.:	31.8			30	
STORAGE:	6.2			6	
P.A.S.:	28.0			7	



UNIT TYPE 3A	AREA (sqm)	WIDTH (m)	MIN REQUIRE	AREA (sqm)	WIDTH (m)
2BP					
GIA:	92.2			90	
BEDROOM 1:	13.0	3.25		13	2.8
BEDROOM 2:	11.4	2.85		11.4	2.8
BEDROOM 3:	7.2	2.1		7.1	2.1
K.L.D.:	34.0			34	
STORAGE:	3.6			9	
P.A.S.:	9.6			9	

UNIT TYPE	DESCRIPTION	AMOUNT	BEDROOM 1 AREA	BEDROOM 2 AREA	BEDROOM 3 AREA	AGG. BEDROOM AREA	K/L/D AREA	STORAGE AREA	GROSS AREA	P.A.S. AREA
1A	1 BEDROOM APT	36	11.5	0	0	11.5	24.1	3	50.6	7.1
2A	2 BEDROOM 3 PERSON APT	8	13	7.1	0	20.1	28.1	5	66.9	9.1
2B	2 BEDROOM 3 PERSON APT	5	13	7.1	0	20.1	28.6	5	68.1	7.6
2C	2 BEDROOM 4 PERSON APT	51	13.4	11.4	0	24.8	30	6.2	77.4	7.3
2D	2 BEDROOM 3 PERSON UD APT	5	14.2	8.4	0	22.6	36.9	5.3	61.7	8.1
2E	2 BEDROOM 4 PERSON APT	4	13.4	11.4	0	24.8	31.8	6.2	78.8	28
3A	3 BEDROOM APT	6	13	11.4	7.2	31.6	24	9	92.2	9.6
3B	3 BEDROOM DUPLEX APT	6	13	14	7.1	34.1	35.4	9.2	104.4	22