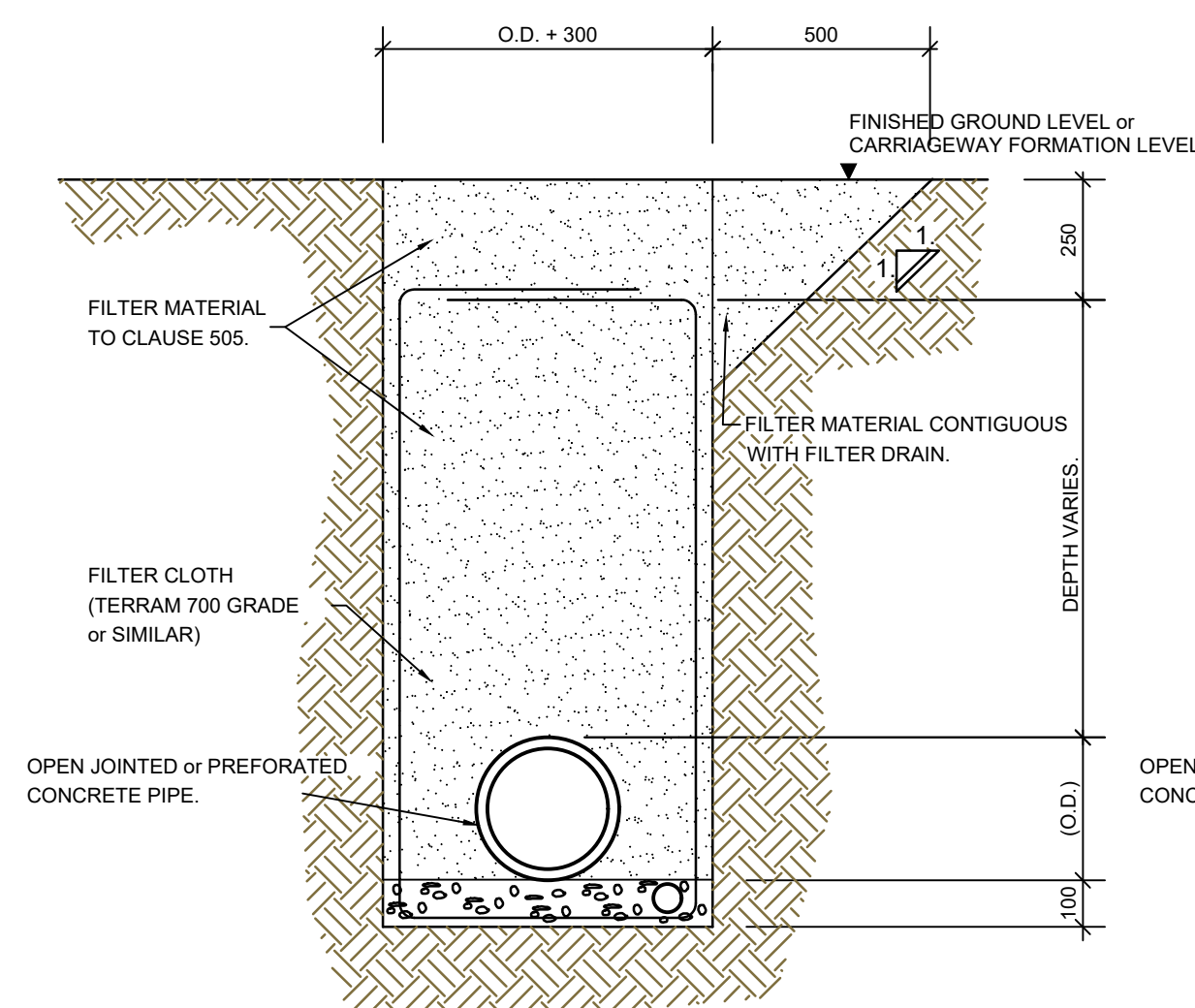
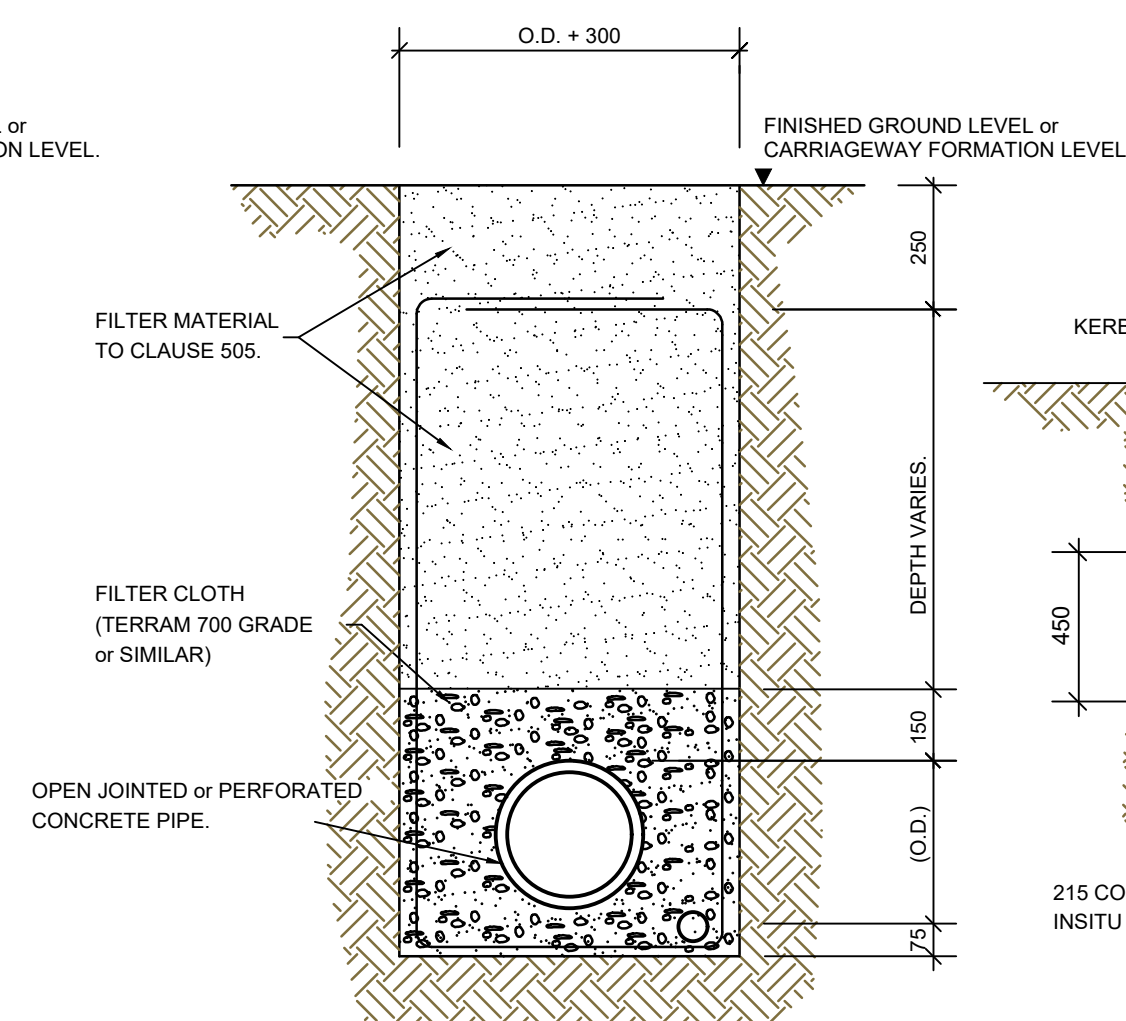


NOTES

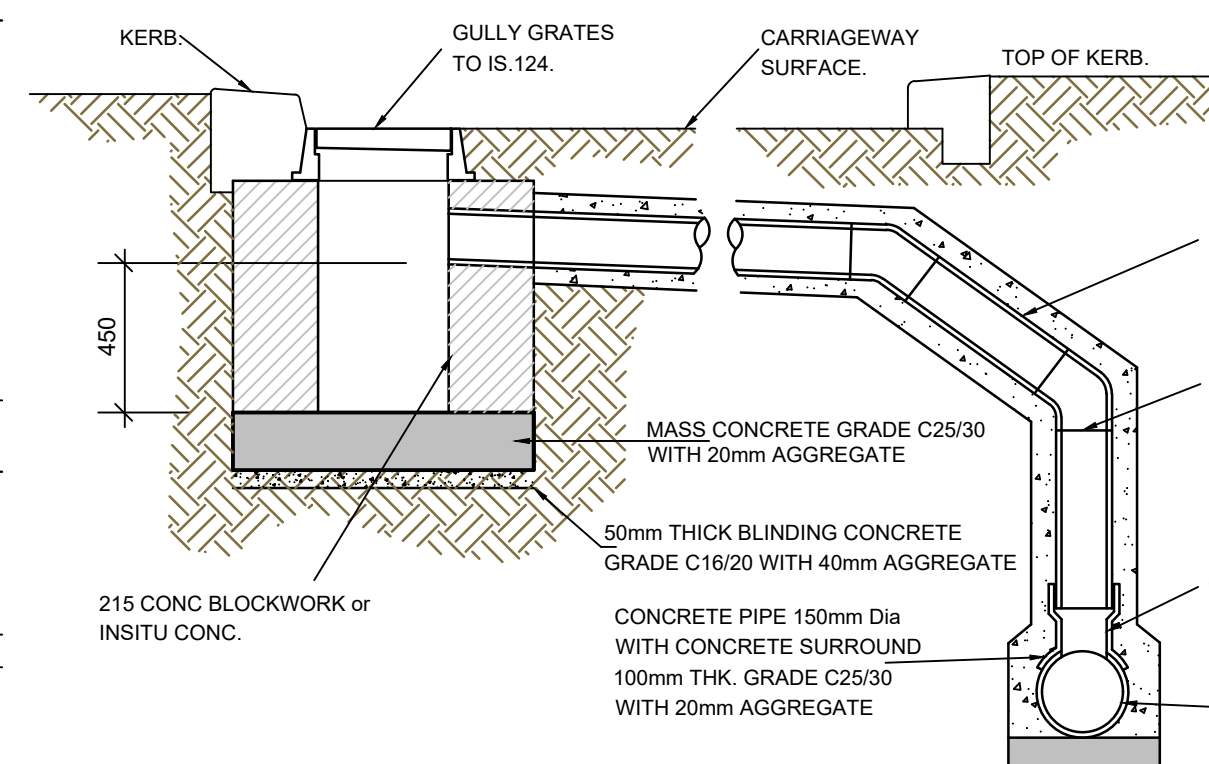
1. THIS DRAWING IS TO BE READ IN CONJUNCTION WITH RELEVANT ARCHITECTS AND ENGINEERS DRAWINGS.
2. FIGURED DIMENSIONS ONLY TO BE TAKEN FROM THIS DRAWING. ALL DIMENSIONS TO BE CHECKED ON SITE. ENGINEER TO BE INFORMED IMMEDIATELY OF ANY DISCREPANCIES BEFORE ANY WORK PROCEEDS.
3. REFER TO DRAWING **21208-DOW-0000** FOR PROJECT SPECIFICATION.



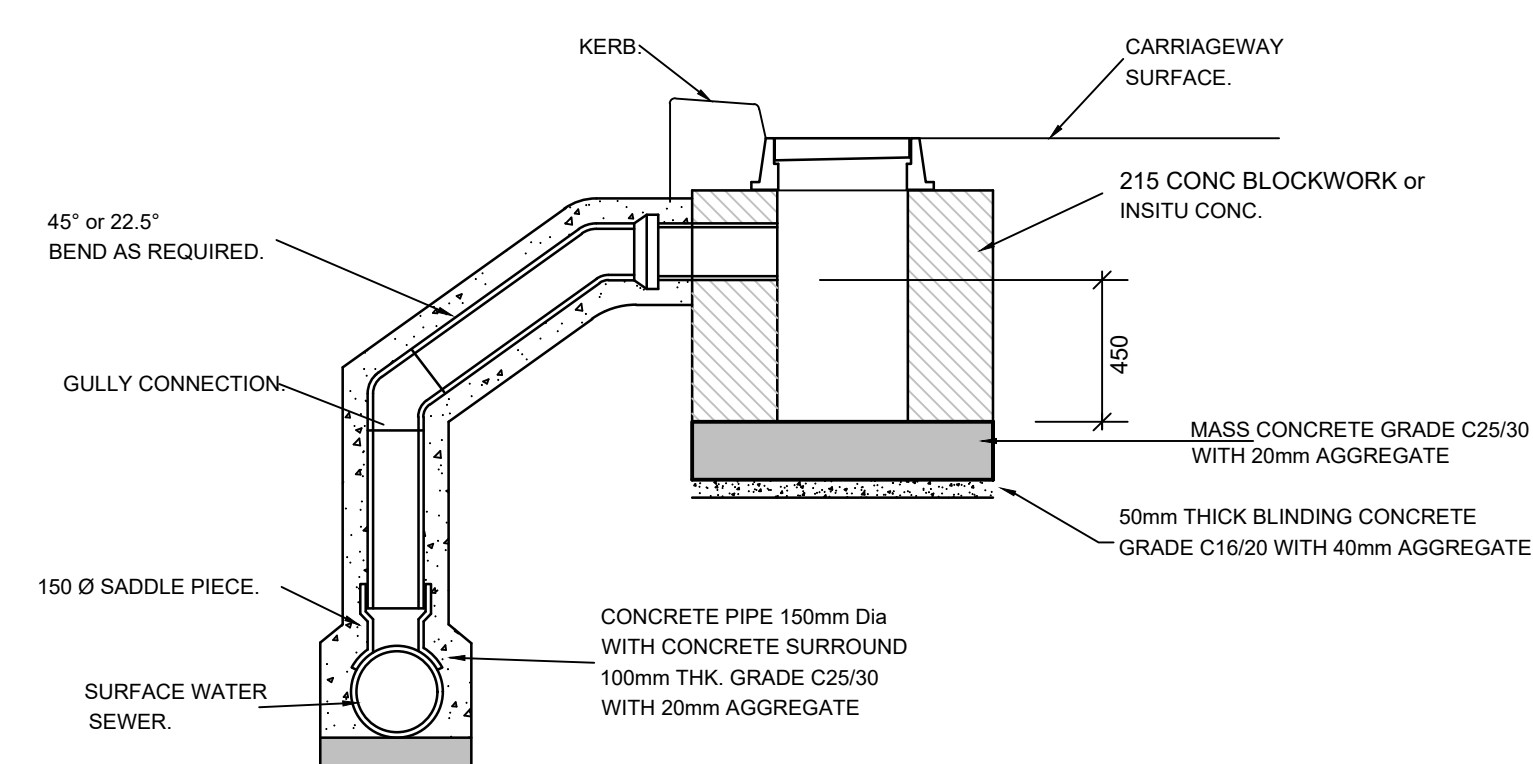
DETAIL-A.



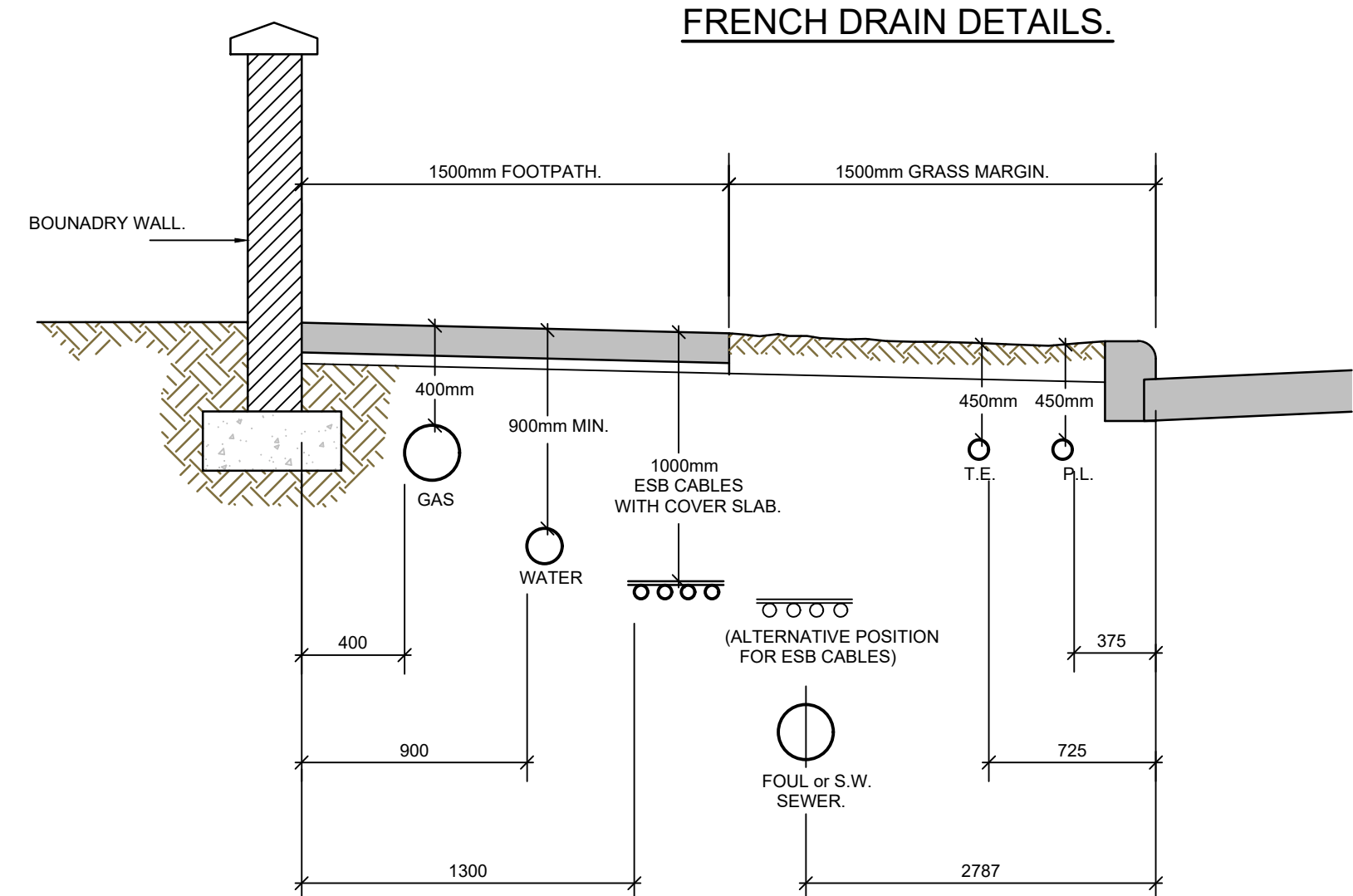
DETAIL-B.



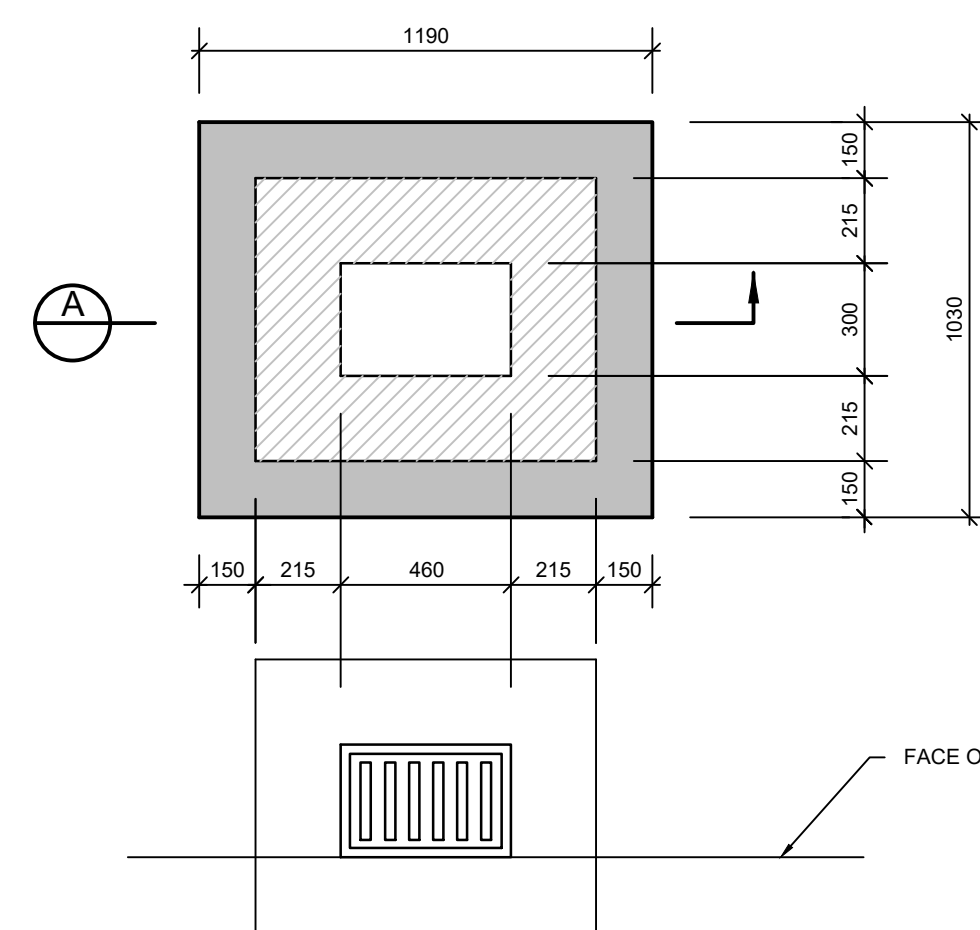
GULLY PIT TO SW. SEWER ON OPPOSITE SIDE OF CARRAGEWAY.



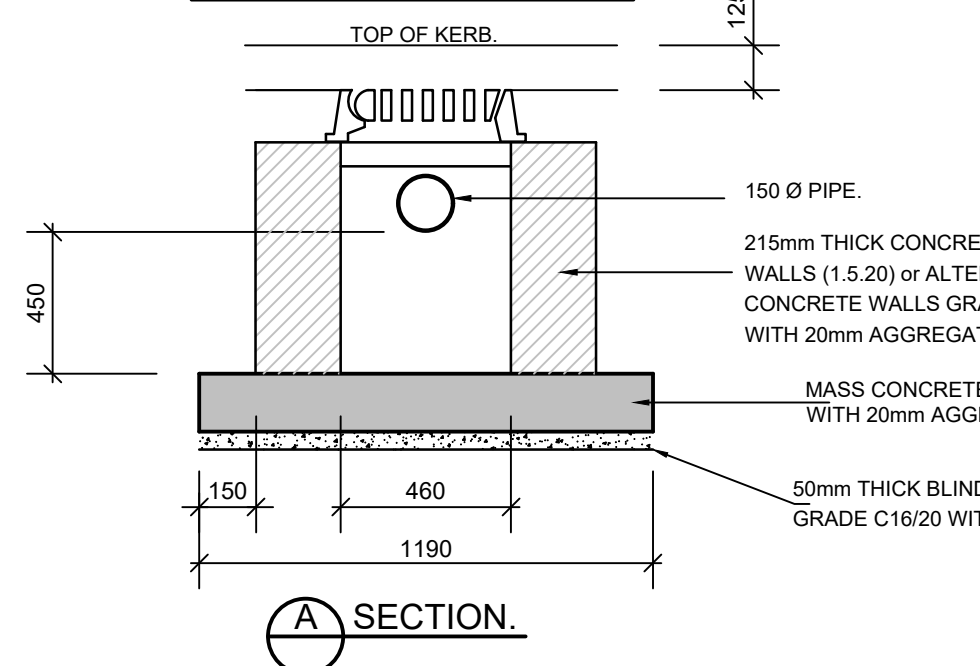
GULLY PIT TO SW. SEWER ON SAME SIDE OF CARRAGEWAY.



TYPICAL LAYOUT OF SERVICES IN FOOTPATH/GRASS MARGIN.

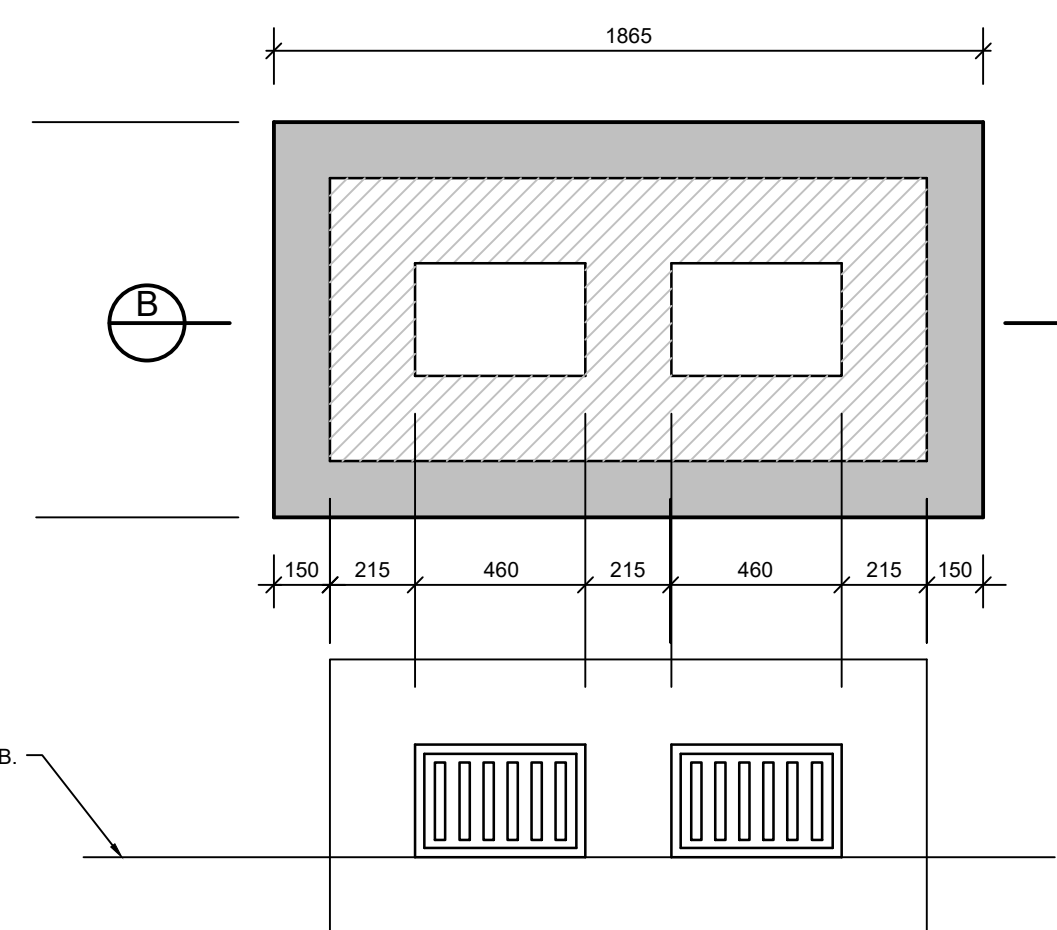


BASE AND SURFACE PLANS.

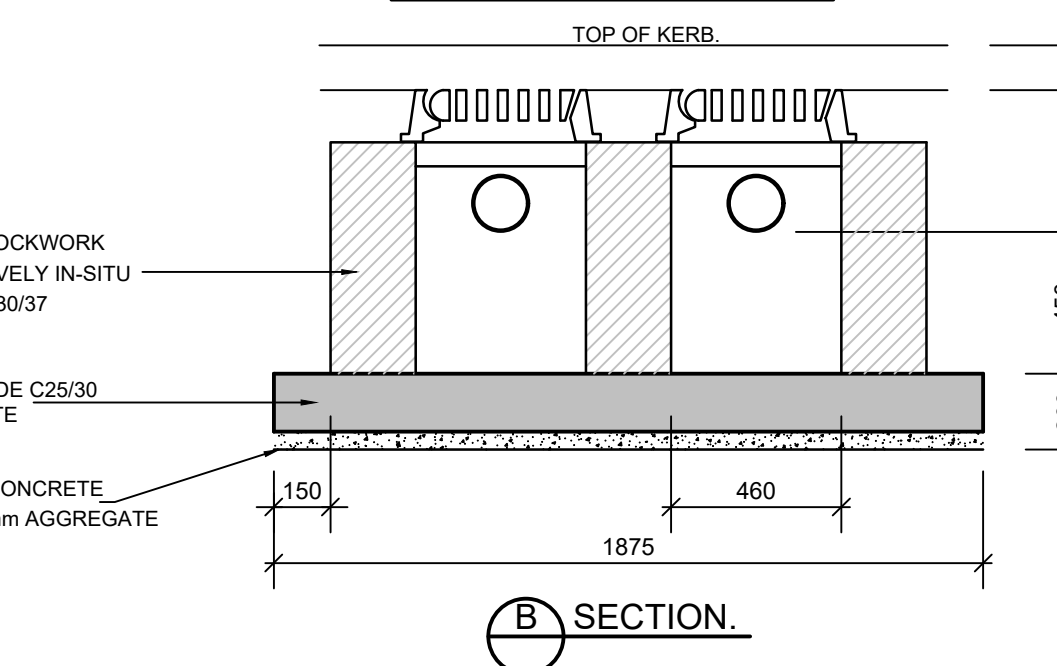


SECTION A.

ROAD GULLY.



BASE AND SURFACE PLANS.



SECTION B.

DOUBLE ROAD GULLY.

Rev	Date	Amendments	by	chkd
P01	18.08.22	ISSUED FOR PLANNING	AG	AD

PROJECT
PROPOSED HOUSING DEVELOPMENT AT MAYESTON, POPPINTREE, DUBLIN 11

CLIENT
FINGAL COUNTY COUNCIL

DRAWING TITLE
GULLY DETAILS

drawn by: AG date: 18.08.22 scale: N.T.S @ A1 chk: AD

MAYE - DOW - 00 - XX - DR - CE

Project	Originator	Volume	Level	Type	Role
21208	4003				P01

S4: SUITABLE FOR PLANNING

Suitability Status: Code - Description
Cashel Business Centre, Cashel Road, Kimmage, Dublin 12
T 01 4901611
E admin@downesassociates.ie
www.downesassociates.ie