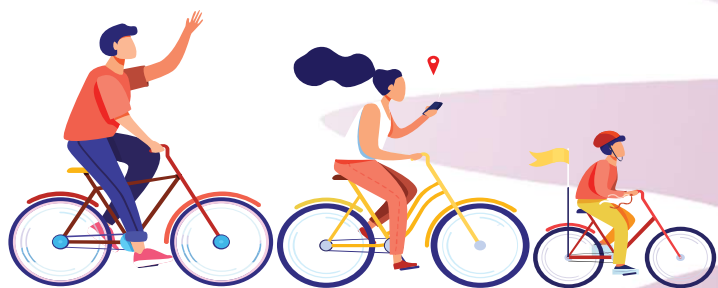


Comhairle Contae Fhine Gall
Fingal County Council



Protected Cycle Lane – R132 Blake’s Cross to Minister Road



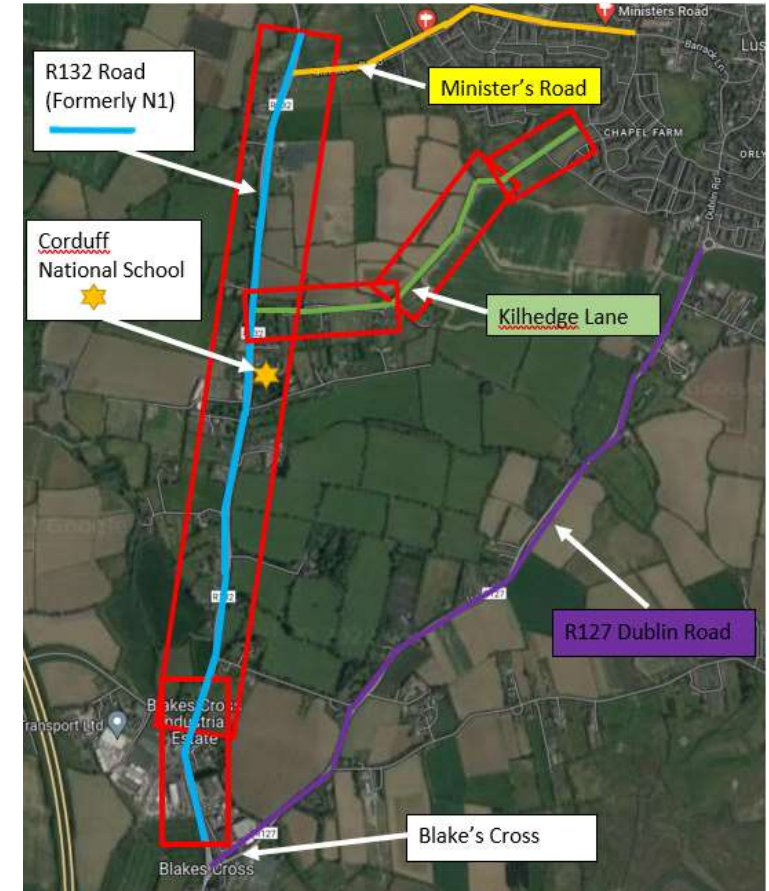
Fingal County Council

Environment, Climate Action & Active Travel Department

fingal.ie

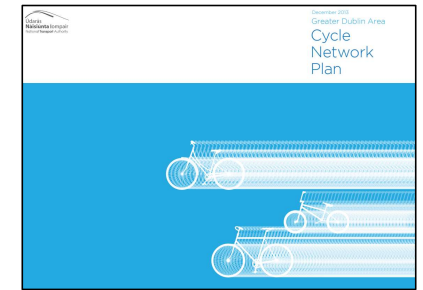
Project Location

- Along the R132 (Formerly N1) in north Fingal between Swords and Lusk
- Commence north of Blake's Cross and travel approximately 2.7km north along the R132 to the junction of Ministers Road
- Works included along Kilhedge Lane between junction of R132 and Dun Emer Avenue (1.4km)
- Project delivered under Section 38 of the Roads Act, 1994 and amendments
- Cycling infrastructure to the south will be delivered through future projects on a phased basis



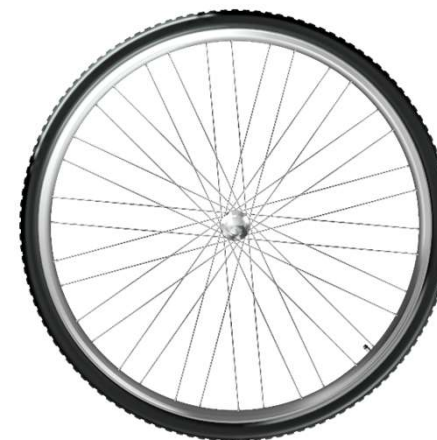
Justification for Project

- National Legislation - Climate Action and Low Carbon Development (Amendment) Act 2021 – key element for LAs to prepare Climate Action Plans
- Fingal’s Development Plan (2017-2023) – promote the development of cycling with emphasis on direct, comfortable, convenient, and safe routes
- Fingal’s Climate Action Plan (2019-2024) – to promote modal shift to active travel and deliver county cycle network
- Greater Dublin Area Cycle Network Plan - Strategic objective of Irish Government, NTA & State Agencies
- Improve regional connectivity between main towns in Fingal and reduce carbon footprint



Benefits Delivered by Project

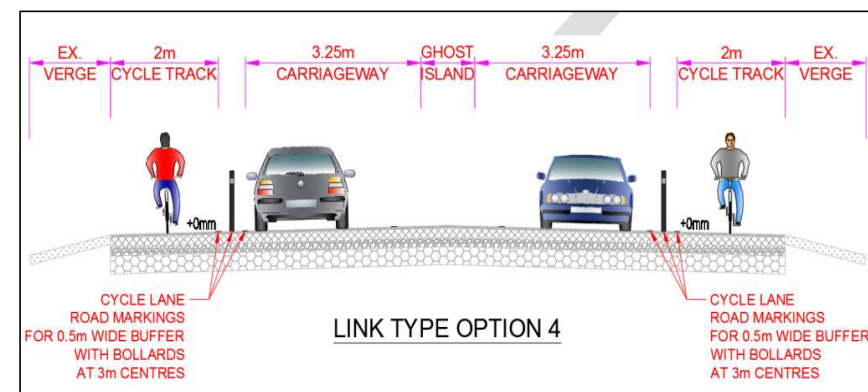
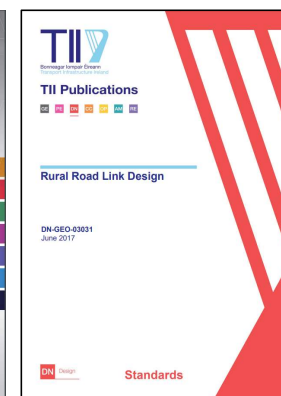
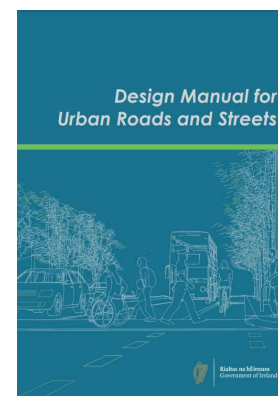
- Lower vehicle speeds will deliver a safer road experience for pedestrian, cyclist and driver
- Creation of safe space for those who wish to cycle within the local area including to Corduff School
- Strengthening the link from Lusk to Blake's Cross and south into Swords and north to Balbriggan and future proofing for links to other projects in GDA cycle network
- Safe local transport alternative to using private car. Route not well served by public transport
- Reduce carbon emissions and improve air quality in area



Design Options Study



- To determine safe suitable design for cycling facilities
- Assessed under Multi Criteria Analysis for Safety, Environment, Accessibility & Social Inclusion, Economy and Physical Activity
- Several design options considered including ; Cycle Lane with Line Markings, Two-Way Cycle Track, Raised Cycle Track, Cycle Track with Kerb Upstand and Cycle Track with Bollards and Separation Zone.
- Recommended Option - **At Grade Cycle Track with Bollards and Separation Zone**
- Suitable proposal considering large agricultural vehicles and machinery along the route, as well as catering for all road users in a safe manner. Vehicles will be able to pass.



Recommended Design

- 2.7km of Protected Cycle Lanes in both directions along R132 Road
- Utilising hard shoulder for Protected Cycle Lane on both sides of the road (No land take required)
- Traffic calming and speed reduction measures
- Improved connectivity for cycling to schools, public transport, residential estates and Lusk Town
- Delineated cycle lanes with bollards, line marking and concrete islands
- Replacement of existing gullies to cycle friendly gullies



Next Steps

- Briefing at Full Council Meeting 04th July 2022
- Public Consultation for Project and Speed Limit Reduction Stage 6 weeks
- Ratification of reduction to speed limit at Full Council Meeting
- Tender process for procurement of works contractor
- Road Safety Audit – Stage 3 (Construction)
- Liaise further with Schools, Residents and Businesses
- Monitoring scheme operation
- Project review & lessons learnt

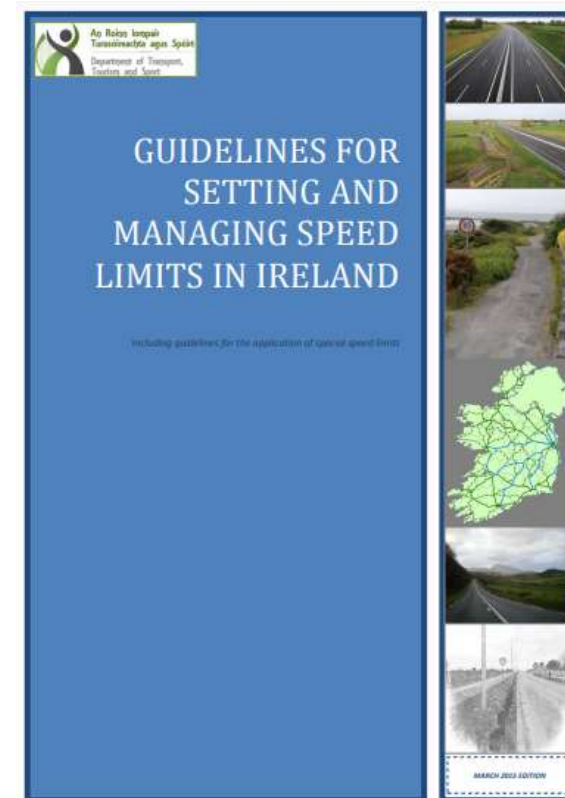




Speed Limit Reduction
For
R132 from Kilhedge Lane to Quickpenny Lane
And
Ministers Road

Special Speed limit Process

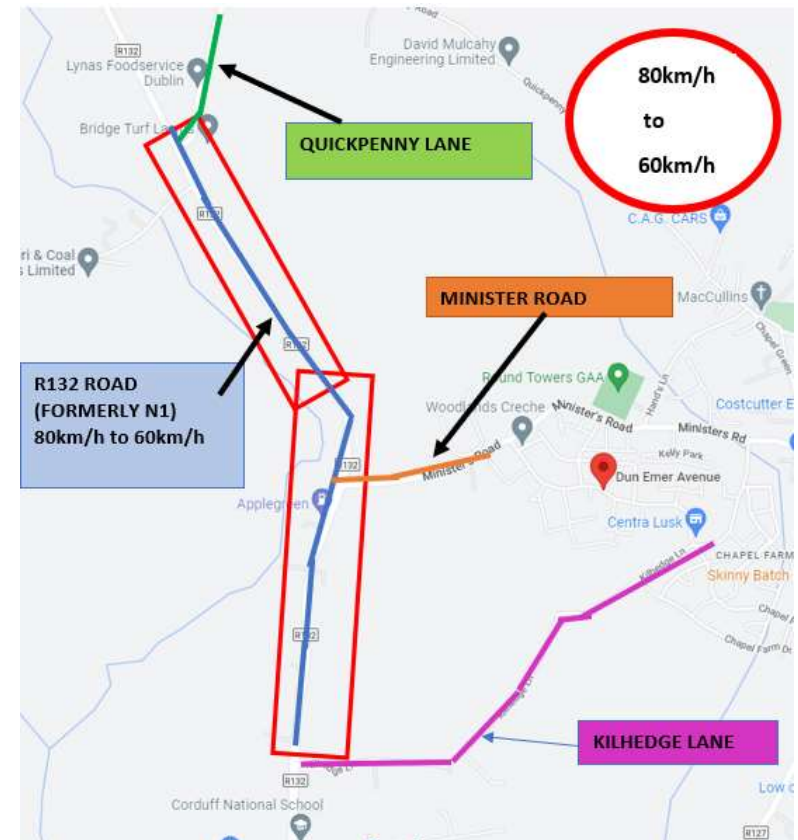
- Notice to Garda Commissioner
- Briefing to Local Councillors
- Headed item at Full Council Meeting July 4th 2022
- Public Consultation (6 weeks)
- Assessment of submissions and preparation of report
- Elected members consider report
- Adopted at Full Council Meeting
- Publish Bye-Laws stating specific day new speed limits come into force



R132 from Kilhedge Lane to Quickpenny Lane – 80km/h to 60km/h



- Proposal to reduce existing speed limit from **80km/h to 60km/h** in line with existing road network south of Corduff School
- Approximately 1.9km in length from north of Kilhedge Lane junction to north of Quickpenny Lane Junction
- Roads of 80km/h and above require separation distances between vehicles and cyclists that are not achievable without significant land take
- Benefit the entire project by falling under one design philosophy rather than changing design midway through
- Reduction road widths will act as traffic calming and assist with protecting the vulnerable road users



Ministers Road – 80km/h to 50km/h

- Proposal to reduce existing speed limit from **80km/h to 50km/h**
- Approximately 0.3km in length from west of Dun Emer Estate to junction connecting to R132
- Reduces the requirement for motorists to adapt to three different speed limits over a short distance
- More appropriate speed for the character of this section of road due to narrowness of road and surrounding boundary vegetation
- Proposed 50km/h more suitable for the character of this section of road

