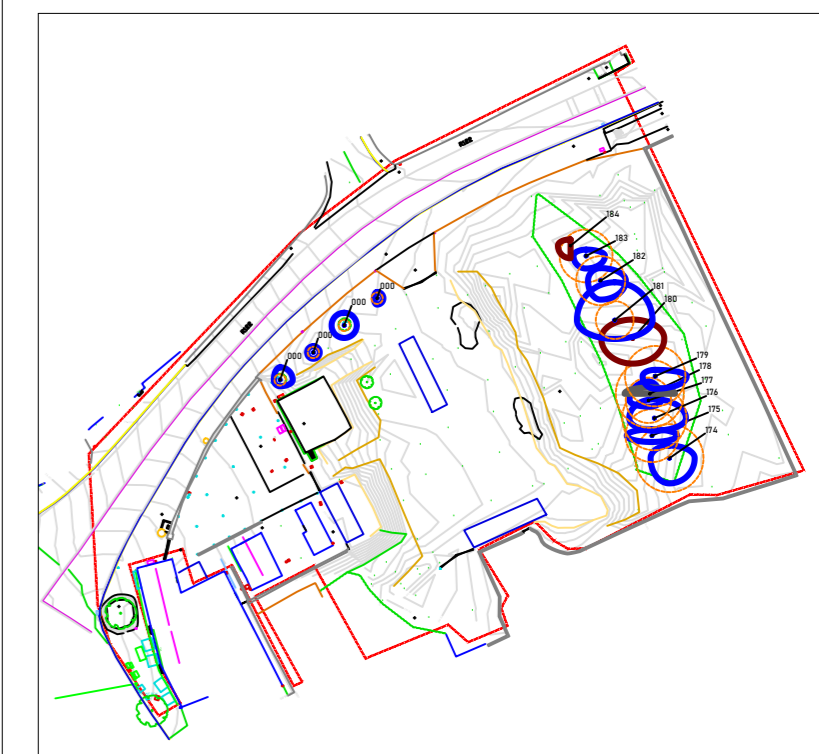


**LEGEND**

**TREE CONDITION CATEGORIES**

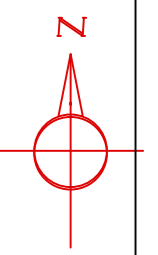
- A TREES OF HIGH VALUE AND QUALITY
- B TREES OF MODERATE VALUE AND QUALITY
- C TREES OF LOW QUALITY AND VALUE
- U TREES OF VERY LOW VALUE AND QUALITY TO BE REMOVED IN THE INTERESTS OF SOUND ARBORICULTURAL MANAGEMENT
- TREE CONSTRAINTS
- SITE BOUNDARY

Drawing to be interpreted with reference to Arboricultural Assessment document.  
 Tree locations are approximate only.  
 Tree constraints shown are calculated from guidelines contained within BS5837 (2012) with dimensions contained within Section 8 of the Tree Survey document. This outline should not be interpreted as the exact extent of root spread however it is considered the optimal area to be retained free of developmental impacts.  
 Natural and/or man made barriers such as waterlogged soil or buildings may restrict the spread of tree roots. Crown spreads may also prove to be a constraint particularly where crown reduction may not be possible.  
 The constraints lines shown on this drawing are therefore a guide only. An on-site assessment should be undertaken in the event of any developments being planned within the areas shown for retained trees.



SCALE 1:1200

SCALE 1:250



**CMK**  
 Horticulture & Arboriculture

REV	DATE	DESCRIPTION

CLIENT: FCC	PROJECT: SEAMUS ENNIS ARTS CENTRE	JOB NO. TNAU001
DRAWING: Tree Survey & Constraints	DATE: 20-04-21	SCALE: AS SHOWN
DRAWN BY: Ciara Keating	CK INITIALS	REVISION:
STATUS: INFORMATION		

Do Not Scale. Use Figure Dimensions Only.  
 Not for Construction. Purpose: Client Information Only.  
 © THIS DRAWING IS COPYRIGHT OF CMK HORTICULTURE & ARBORICULTURE