


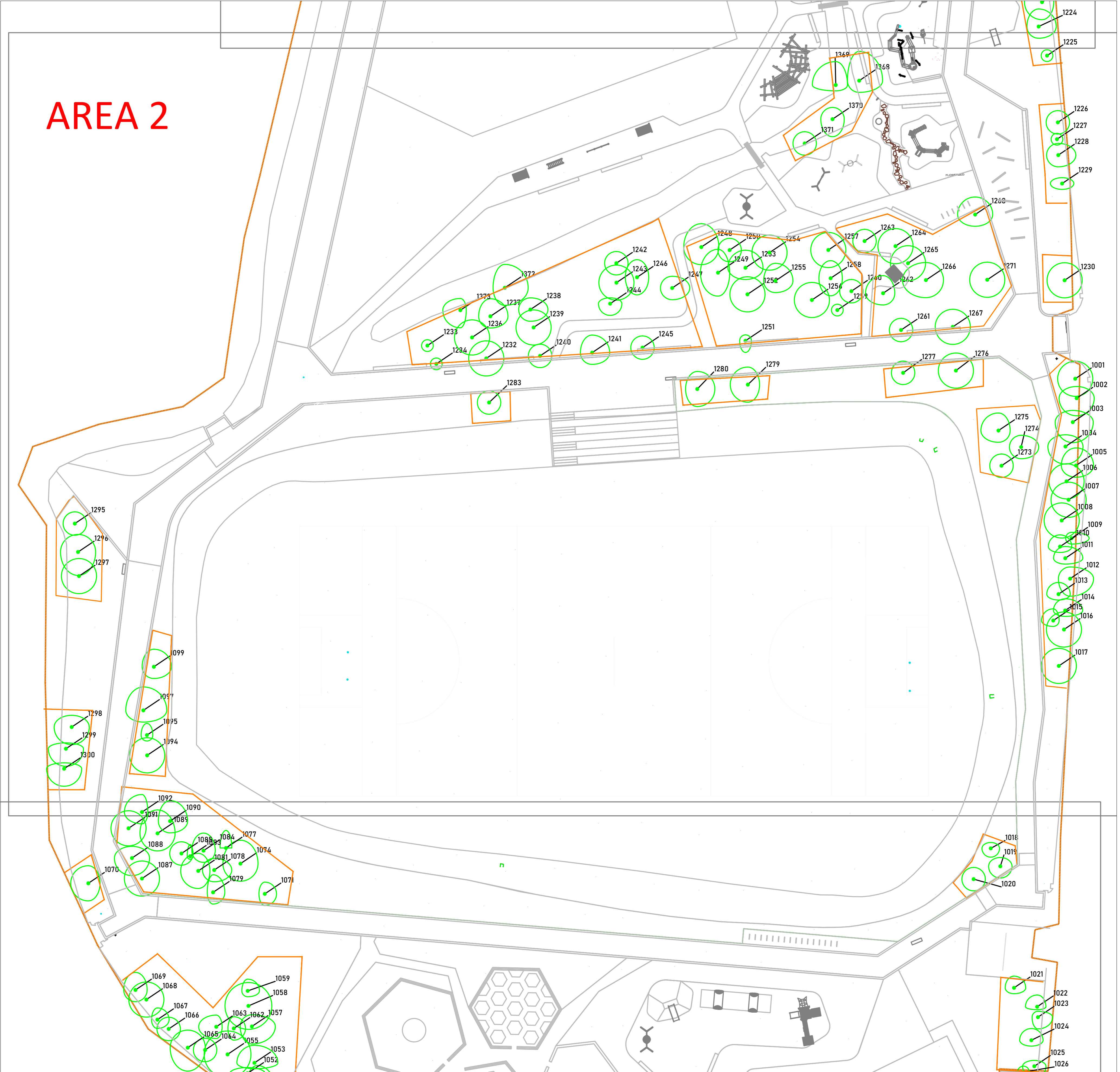


**LEGEND**

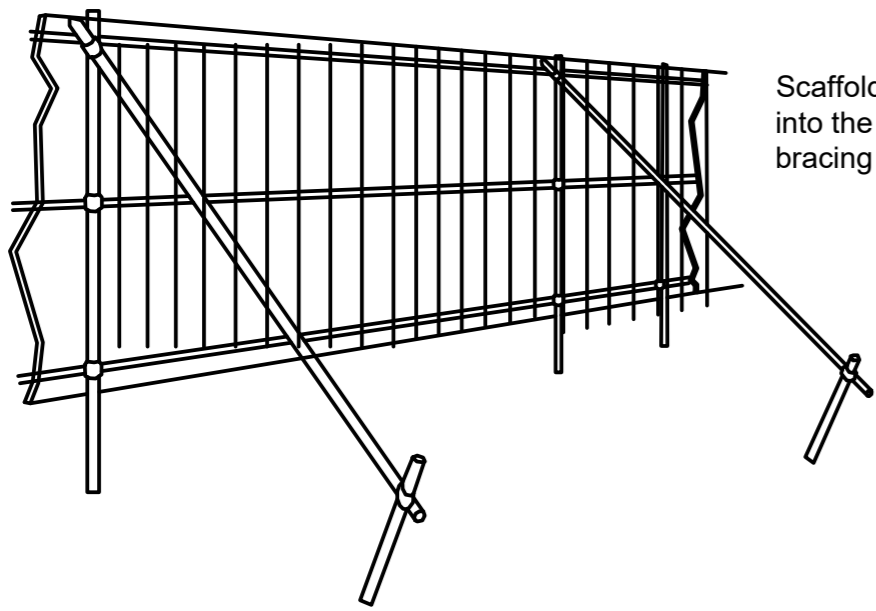
-  TREES RETAINED
-  TREE PROTECTION FENCING
-  SITE BOUNDARY

**NOTE:**  
REFER TO THE ARBORICULTURAL ASSESSMENT REPORT FOR DETAILS ON TREE PROTECTION

# AREA 2

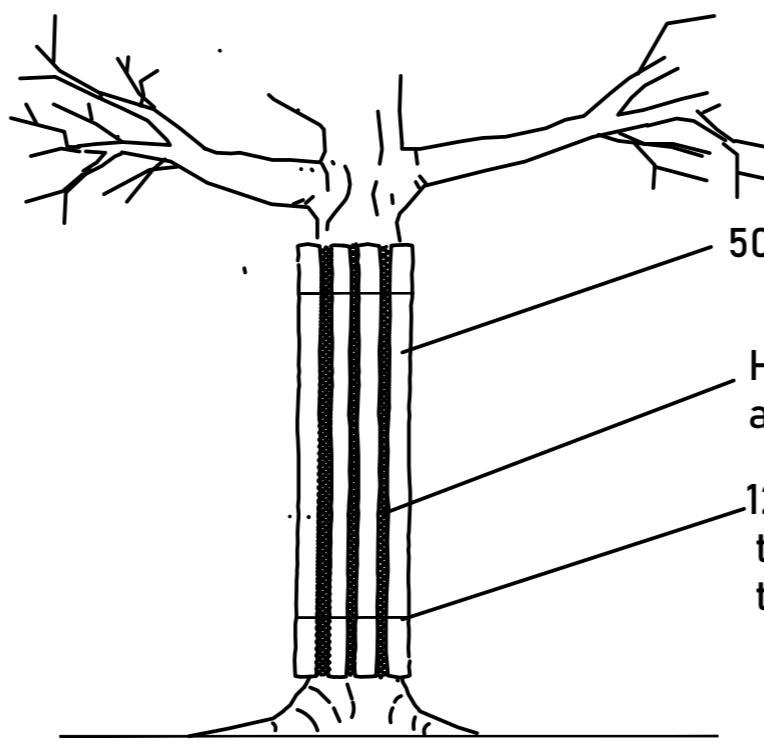


HERRAS FENCING OR SIMILAR APPROVED



Scaffold Uprights driven well into the ground with additional bracing as required

**TREE PROTECTION DETAIL A:  
HERRAS FENCING OR SIMILAR APPROVED**



50x150mm timber boards  
Hessian between boards and timber  
12 gauge wire stapled to boards and tied together

**TREE TRUNK PROTECTION DETAIL B**



**TREE PROTECTION AREA**  
KEEP OUT!  
Trees included on this plan are protected by a tree preservation order. No work should be carried out on any of these trees without the written consent of the Council's Arboriculture Department.

**TREE PROTECTION SIGNAGE**

REV	DATE	DESCRIPTION



**CMK**  
Consultants & Arboriculture Ltd

CLIENT: FRIGAL COUNTY COUNCIL	PROJECT: LANESBOROUGH PARK	JOB NO. TFCC001
DRAWING: TREE PROTECTION (2 of 3)	DATE: 25-08-21	SCALE: 1:350 @ A1
NOTES: 1. See Site Plan for Fenced Dimensions Only. 2. See Arboriculture Department for details of any work to be carried out on any of these trees without the written consent of the Council's Arboriculture Department. 3. This drawing is a component of the overall tree protection plan.	DRAWN BY: C. H. H. H.	CHECKED BY: C. H. H. H.
STATUS: PLANNING		REVISION: A