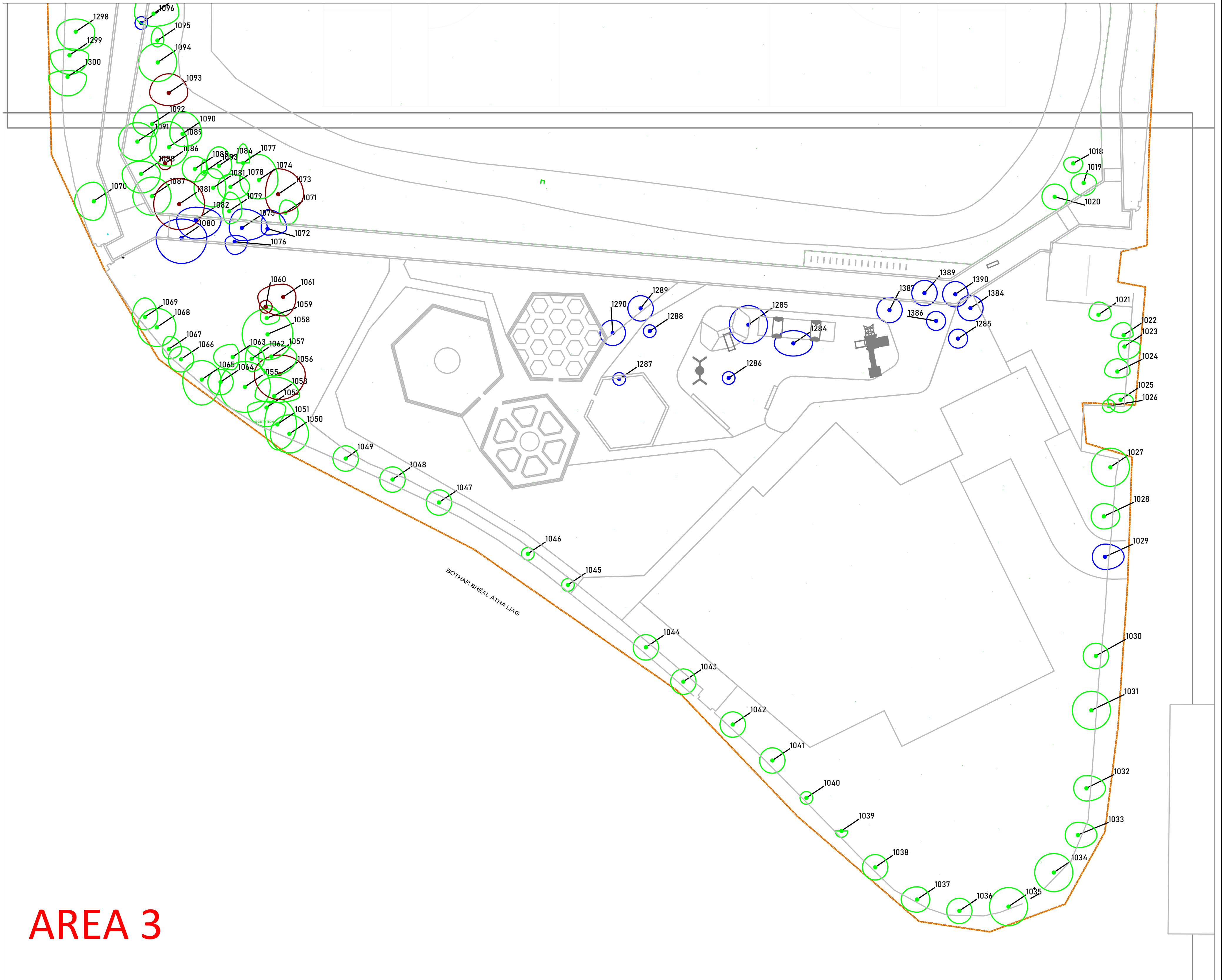


ARBORICULTURAL IMPACT

- TREES RETAINED
- TREES REMOVED DUE TO CONSTRUCTION
- TREES REMOVED DUE TO CONDITION

— SITE BOUNDARY

Note:
REFER TO THE ARBORICULTURAL ASSESSMENT
& IMPACT REPORT FOR DETAILS ON TREE
RETENTION / REMOVAL



AREA 3

REV	DATE	DESCRIPTION



CMK Consultants & Arboriculture Ltd		PROJECT: LANESBOROUGH PARK		JOB NO. TFCC001
CLIENT: FINGAL COUNTY COUNCIL	DRAWING: ARBORICULTURAL IMPACT (3 of 3)	DATE: 25-08-21	SCALE: 1:350 @ A1	DRAWING NO. 108
NOTES: Do Not Scale - Use Figure Dimensions Only © This Drawing is Copyright of CMK Consultants & Arboriculture Ltd	DRAWN BY: Clare Keating	Checked: CK	REVISION: A	STATUS: PLANNING