

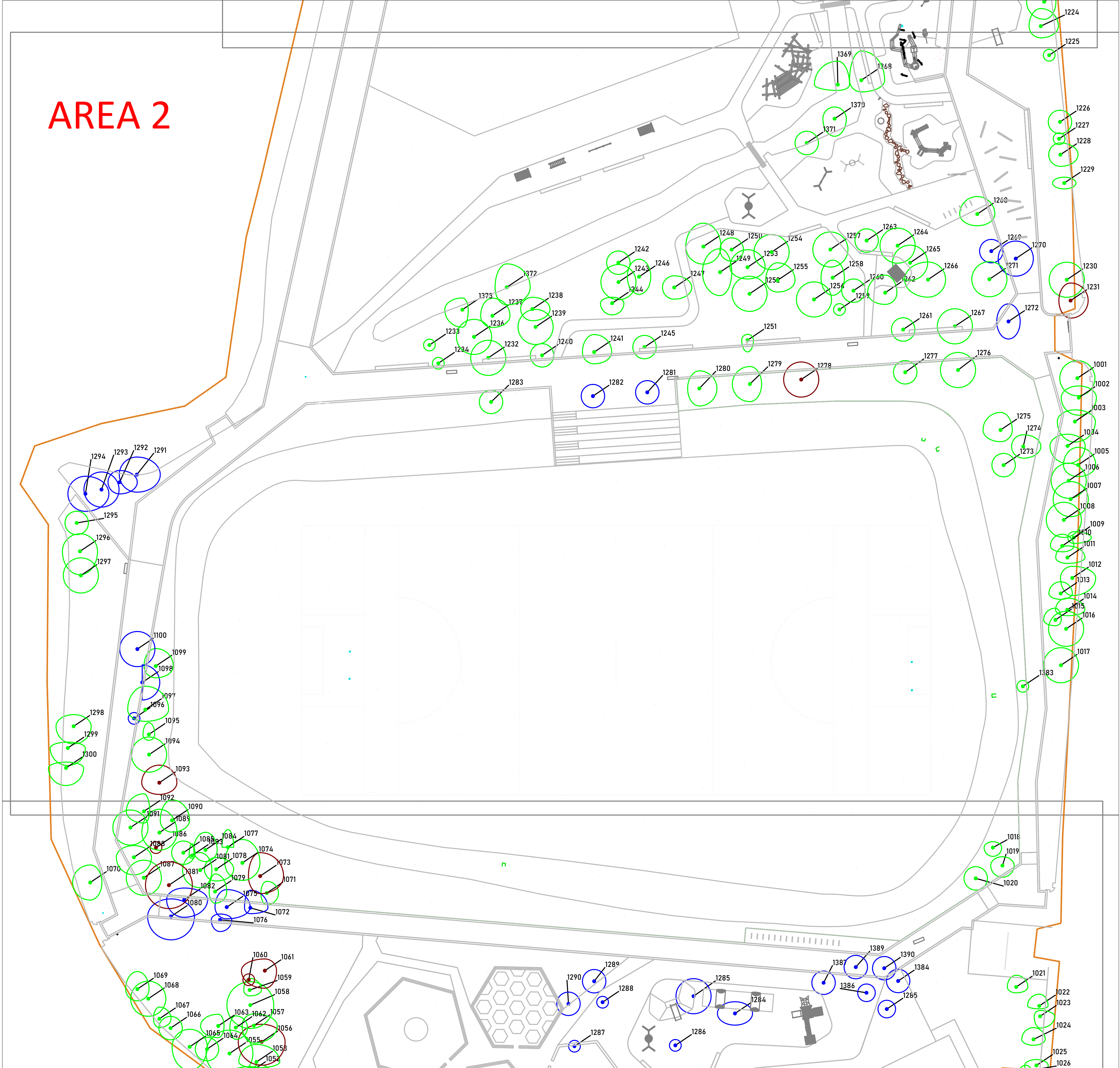
ARBORICULTURAL IMPACT

- TREES RETAINED
- TREES REMOVED DUE TO CONSTRUCTION
- TREES REMOVED DUE TO CONDITION

— SITE BOUNDARY

Note:
REFER TO THE ARBORICULTURAL ASSESSMENT
& IMPACT REPORT FOR DETAILS ON TREE
RETENTION / REMOVAL

AREA 2



REV	DATE	DESCRIPTION



CMK
Consultants & Arboriculture Ltd

CLIENT: FRINGAL COUNTY COUNCIL	PROJECT: LANESBOROUGH PARK	JOB NO. TFCC001
DRAWING: ARBORICULTURAL IMPACT (2 of 3)	DATE: 25-08-21	SCALE: 1:350 @ A1
DRAWN BY: Claire Harding	CHECKED BY: CMK	REVISION: A
STATUS: PLANNING		