

**Fingal County Council Development Plan
Stage 2 Submission**

*Cultural Centre with a place of worship, horticultural community
& recreational areas*



**International Society for Krishna Consciousness (IRL) Ltd.
Founder-Acarya His Divine Grace A.C. Bhaktivedanta Swami Prabhupada**

Member of the European Council of Hindu Organisations
and National Council of Hindu Temples (UK)

Ireland Office: 83 Middle Abbey Street Dublin 1 & 4 Aungier Street, Dublin 2, Rep. of Ireland.
Phone: (01) 4750309 Fax: (01) 4786204 E-mail: contact@krishna.ie & Praghosa.sdg@pamho.net



International Society for Krishna Consciousness (IRL) Ltd.

Founder-Acarya His Divine Grace A.C. Bhaktivedanta Swami Prabhupada
83, Middle Abbey Street, Dublin 1, Ireland.

Email: contact@krishna.ie & Praghosa.sdg@pamho.net

Phone: (01) 4750309 Fax: (01) 4786204

To:

Fingal County Council
County Hall, Main Street,
Swords, Co. Dublin
K67 X8Y2.

[FINGAL DEVELOPMENT PLAN STAGE 2 - COVER LETTER](#)

The International Society for Krishna Consciousness (ISKCON) includes over seven hundred major centers, temples and rural communities, nearly one hundred affiliated vegetarian restaurants, thousands of local meeting groups, a wide variety of community projects, and millions of congregational members worldwide. ISKCON has been a charitable organisation in Dublin since 1980, with a great record of working with the community in religious, multicultural and humanitarian areas. ISKCON also operates two vegetarian restaurants in Dublin City Centre, one on Middle Abbey Street and the other on Aungier Street Street, The restaurants are called 'Govindas'. Our head office is at Middle Abbey Street, which also serves as the communities' main cultural centre.

Our proposal is to build a Cultural Centre with a place of worship, along with a horticultural community & recreational areas. Since ISKCON's inception in Ireland we have constantly been seeking a community building which reflects our lifestyle and caters for the ever growing Indian community in Dublin. Having been restricted to date to temporary leases, small halls and inappropriate locations, we now feel it is time to facilitate our community with a custom built centre and temple which will fulfill the social, spiritual, cultural and educational needs of our growing community. With our large indigenous membership, together with the Indian diaspora, ISKCON has demonstrated across the world how to fully cater for this community. Having our own organic farm in Fingal to provide vegetables for our restaurants in Dublin and having examined the Fingal Development Plan, we feel our application very much fits the objectives of your plan. Especially in the underlying areas:

1. Social Inclusion: Our target would be mainly new ethnic communities, children and young people, families and so on.
2. Sustainable Development: Supporting economic growth through the creation of jobs.
3. Healthy Lifestyles: By introducing simple living and high thinking.
4. By focusing on agriculture and horticulture
5. Supporting and exploring different forms of energy – Biomass, Solar energy, Water and Wind energy.
6. In terms of food production, manufacturing, rural based tourism and farm based activities.
7. The creation of parks, recreational areas and open space.

For any further queries, please do not hesitate to contact us on (01) 4750309 or by Email at contact@krishna.ie.

Sincerely,

Martin Davis, Paul Murphy & Tim McEvitt.

Board of Directors

Table of Contents

- 1. INTRODUCTION..... 1**
 - 1.1. PURPOSE OF THIS DOCUMENT 1
 - 1.2. INFORMATION ABOUT THE ORGANISATION 1
 - 1.3. BOARD OF DIRECTORS AND COMMUNITY MEMBERS 3
 - 1.3.1. Directors 3
 - 1.3.2. Community Members..... 4
 - 1.4. OUR CURRENT ACTIVITIES AND FUTURE PLAN..... 5
 - 1.4.1 Teaching..... 5
 - 1.4.2 Yoga and Meditation..... 6
 - 1.4.3. Cultural Events..... 6
 - *Public Festivals*..... 6
 - *Weddings*..... 7
 - 1.4.4. Food for all..... 7
 - 1.4.5. Farming..... 7
- 2. ARCHITECTURAL DESIGN 8**
- 3. OBSERVATIONS 10**
 - 3.1. CHAPTER 3 - PLACEMAKING..... 10
 - 3.2 CHAPTER 5 - RURAL FINGAL..... 11
 - 3.2.1. Agriculture 12
 - 3.2.2. Horticulture 12
 - 3.2.3. Agri food..... 12
 - 3.2.4. Rural tourism 12
 - 3.3. TARGET AREAS..... 13
- 4. OBSERVATION SUMMARY..... 14**
- 5. APPENDICES 15**
 - Appendix A. Rathayatra Parade in Dublin 15
 - Appendix B - Summer Festival Celebrated in 2015 in Dublin, Galway, Cork & Belfast 17
 - Appendix C - Weddings..... 22
 - Appendix D- Government leaders visiting ISKCON 23

1. INTRODUCTION

The International Society for Krishna Consciousness (ISKCON IRELAND LIMITED) was incorporated in Dublin in 1980 and like many of its 700+ branches throughout the world; it has consistently catered for the Hindu Diaspora as well as a growing community of indigenous and international members.

ISKCON's main aim is to bring members in the community closer together for the purpose of teaching a simpler and more natural way of life. In addition, the organisation wants to systematically propagate spiritual knowledge to society at large and to educate all peoples in the techniques of spiritual life in order to check the imbalance of values in life and to achieve real unity and peace in the world.

1.1. PURPOSE OF THIS DOCUMENT

This document has been written for Stage 2 of the Fingal County Council Development plan and its main purpose is to provide the Council with information about our organisation, our past and current activities and also provide the council with an overview of our future plan. Furthermore, we are also putting forward in this document our observations in relation to the Fingal County Council Draft Plan and our observation summary which includes our main requests and opinions.

In addition with this document, we have a cover letter attached and a PowerPoint presentation to summarise our project as a whole and some architectural design to give an overview of our plans.

1.2. INFORMATION ABOUT THE ORGANISATION

ISKCON Ireland Limited has been a registered company/charity since 1980. The details are as follows:

Registered Company Details:

Name:	INTERNATIONAL SOCIETY FOR KRISHNA CONSCIOUSNESS (IRELAND) LIMITED
Type:	CLG - Company Limited by Guarantee
Company Number:	74340
Registered On:	19/03/1980

Charity Details:

Charity Reg. No.:	20011482
CHY Number:	6368
Charitable Purpose:	Advancement of religion
Previous Location:	2 Belvedere Place, Dublin 1, Ireland

1.3. BOARD OF DIRECTORS AND COMMUNITY MEMBERS

1.3.1. Directors

MARTIN DAVIS



Martin Davis, a native of Dublin has been a member of ISCKON since 1982 and has served as the temple manager and director for many years. He currently runs an art business from his gallery in Dawson Street where he showcases both Irish and International artists. He coorganised the first Irish Biennial in 2012 and in 2015 showcased the London Irish Art Exhibition in Westminster which was opened by the Irish Arts Minister and the Irish Ambassador

Link for the Exhibition: <http://solart.ie/Videos.cfm?VideoID=170>

PAUL MURPHY



Paul Murphy (Praghosa das), a native of Dublin, Ireland, joined the ISKCON Soho Street temple in London in 1983. A year later he relocated to Dublin and took initiation from Satsvarupa Dasa Goswami. He spent the early part of his devotional career distributing Srila Prabhupada's books, raising funds and managing temples in Belfast, the island of Inis Rath, and a rural community in Wicklow, Ireland. Concurrently he and his wife, Goloka devi dasi, raised two sons, Sankarsana and Pancajanya. As things now stand, Paul Murphy and Goloka Devi Dasi direct two Govinda's Restaurants and a preaching centre in Dublin and still care for their two grown sons.

An active contributor to ISKCON's web site Dandavats.com and the driving force behind it, Paul Murphy is also a GBC member. He began in 1997 as a deputy GBC member, but his ability to rise to a challenge, his quick thinking, his creativity and good sense of humor were all noted by the GBC body, and he became a full GBC member in 2001. His areas of responsibility cover some of the world's colder climates: the Channel Islands, Denmark, England, the Faroe Islands, Iceland, Ireland, Northern Ireland, Norway, Scotland, Sweden and Wales. Additionally, Praghosa Dasa assists as co-zonal secretary for ISKCON's headquarters in Mayapur, West Bengal, India.

Paul Murphy is currently serving as chair of the GBC team building group. He also sits on the GBC Appointments, Finance, and BBT/GBC Liaison committees. For three consecutive years, 2002, 2003, and 2004, Paul handled decision-making as an executive officer in the executive committee of the GBC body. For that entire period, he also chaired the annual GBC meetings. Indeed Paul was the first grand disciple of Srila Prabhupada to be chairman of the GBC body. His solid commitment to serving ISKCON in a significant way is further

highlighted by his participation in the European Regional Governing Body (RGB) from its inception in 1997 and by his ongoing managerial responsibilities in ISKCON Dublin.

The GBC meetings, in which current issues and the future of the Hare Krishna movement are discussed, are full of gravity. However, with great determination and flair, Paul Murphy puts together a drama every year to celebrate the lighter side of spiritual life—an amazing feat for someone already fully engaged in devotional service.

TIM MCEVITT



Lake Isle Retreats is a business owned by Tim McEvitt, who hosts retreats in conjunction with a group of friends who are self employed therapists and facilitators.

Tim left his Dublin home at 18 to become a Krishna monk, which was initially a bit of a shock to his family, but now everyone is happy!

He trained at Bhaktivedanta Manor temple near London, and then lived in the temple on Inish Rath Island for 8 years. While in the temple he studied Vedic philosophy from the ancient Sanskrit texts such as Bhagavad Gita and the Bhagavat Purana, plus he learned kirtan-yoga - sacred chant music.

1.3.2. Community Members

Ishani Davis	Homemaker
John McDonnell	Architectural Technologist
Eshwar Kessopersadh	Retired Orthopaedic Surgeon at Connolly Hospital
Pushpa Gheenah	Care Assistant
Sandeep Chowdhury	Software Engineer
Sanjeeb Barik	Database Consultant
Siroumi Daniel	Software Engineer
Sudeep Sanyal	Senior Solution Designer
Manish Babbar	Business analyst and Developer
Ashok	Retired Businessman

1.4. OUR CURRENT ACTIVITIES AND FUTURE PLAN

In this section of the document we will elaborate on our main activities and also introduce our future plans.

1.4.1 Teaching

Teaching is one of our most important activities. We not only teach people about spiritual awareness but also many other areas such as culture, history, self sufficiency, sustainability, cooking, simple living and high thinking. Our aim is to give people knowledge about how to improve themselves and the communities around them.

Some of our existing activities are as follows:

- **Pre-Slavic Literature**

This project was a *'European Lifelong Learning Programme'* that we were involved in from 2013 to 2015. The aim of this European initiative was to study and also promote Pre-Slavic culture and literature across Europe. Delegates from 5 different countries in Europe namely Ireland, Poland, Slovenia, the Netherlands and Hungary met in each of those countries and discussed their common European heritage specifically in the areas of culture and language.

Please see: <http://preslavic.eu/>

- **Sunday School**

We provide a Sunday school at our Dublin Centre and our Inis Rath community in Northern Ireland. At these schools we teach cultural and spiritual values and provide recreation according to the children's ages.

- **Cookery Classes**

Food and specifically vegetarian food is an important part of our cultural ethos. Any event we host, we provide vegetarian food to our guests. At our retreat center in county Fermanagh, we provide cooking seminars. By doing this we promote a healthy living standard and lifestyle. Kurma, a world renowned vegetarian chef is now living in Ireland and hopes to establish a cooking program at our center in the near future.

Refer to:

- <http://www.lakeisleretreats.com/Vegetarian-Cookery-school-Ireland-Irish-cooking-classes-courses-food-of-India.html.html>
- <http://kurma.net/>

- **Eco Village**

Ecovillages are now being created worldwide, so people can once more live in communities that are connected to the Earth in a way that ensures the well-being of all life-forms in the future. Ecovillages are one solution to the major problems of our time - the planet is experiencing limits to growth, and our lives are often lacking meaningful content. We want to provide training and perhaps in the future a pilot scheme in how to create eco villages in order to promote a more natural and sustainable way of life to others in Ireland.

Here are 2 successful examples of this being achieved by our communities in Hungary and Pune, India.

- Pune: <http://ecovillage.org/en>
- Hungary: <http://www.navavrajadhama.hu/en/about>

1.4.2 Yoga and Meditation

Yoga is meant to promote a healthy mind, body and spirit. Yoga is a main part of our daily activities in the form of guided meditation, mantra meditation, ashtanga yoga and hatha yoga. Yoga and Meditation are now becoming part of our modern lifestyle and people are now recognising the benefits of practicing on a regular basis. Because of the high demand for yoga nowadays we want to provide an appropriate facility where people can practice as they desire.

1.4.3. Cultural Events

- **Public Festivals**

ISKCON Dublin has been hosting various public events in Dublin City Centre. An example of this is the Ratha Yatra parade, which takes place annually and is inaugurated by the sitting Lord Mayor of Dublin. Last year's parade was again a notable success with St. Stephen's Green hosting the post parade cultural festival. . Each year we work with the Gardai, Dublin City Council and the OPW to bring this spectacular event to the people of Dublin.

Last year for the first time we organized a summer festival tour which took place in Dublin, Galway, Cork and Belfast. It consisted of Drama, Music, Dance, Cultural learning and Food distribution. We found it to be a great success and are preparing to do the same this year.

Please refer to pictures in Appendix A for the Rathayatra Parade and Appendix B for the Summer Festival 2015.

- **Weddings**

Weddings are an integral part of all cultures and communities. Among our future plans, we intend to provide for and support wedding ceremonies within our community. Currently our weddings are celebrated at our Inis Rath Community; however there is much demand to also host them in Dublin.

See wedding pictures in Appendix C.

1.4.4. Food for all

At all of our major events and festivals, we make arrangements for vegetarian food distribution to the general public. In our 2 restaurants in Dublin City we provide for an ever-growing market for vegetarian lifestyle and every evening at 9 O'clock when the restaurant close we provide first class meals for 1 euro to nearby college students, the unwaged and to the needy alike. In London, one of our Dublin members, Peter O'grady provides a thousand meals per day for the student and for the needy and has embarked on the initiative of feeding the 5 thousands which he has done in major cities in Europe including Cork and Dublin.

Please visit:

- <http://www.ffl.org/>
- <http://foodforall.org.uk/>

1.4.5. Farming

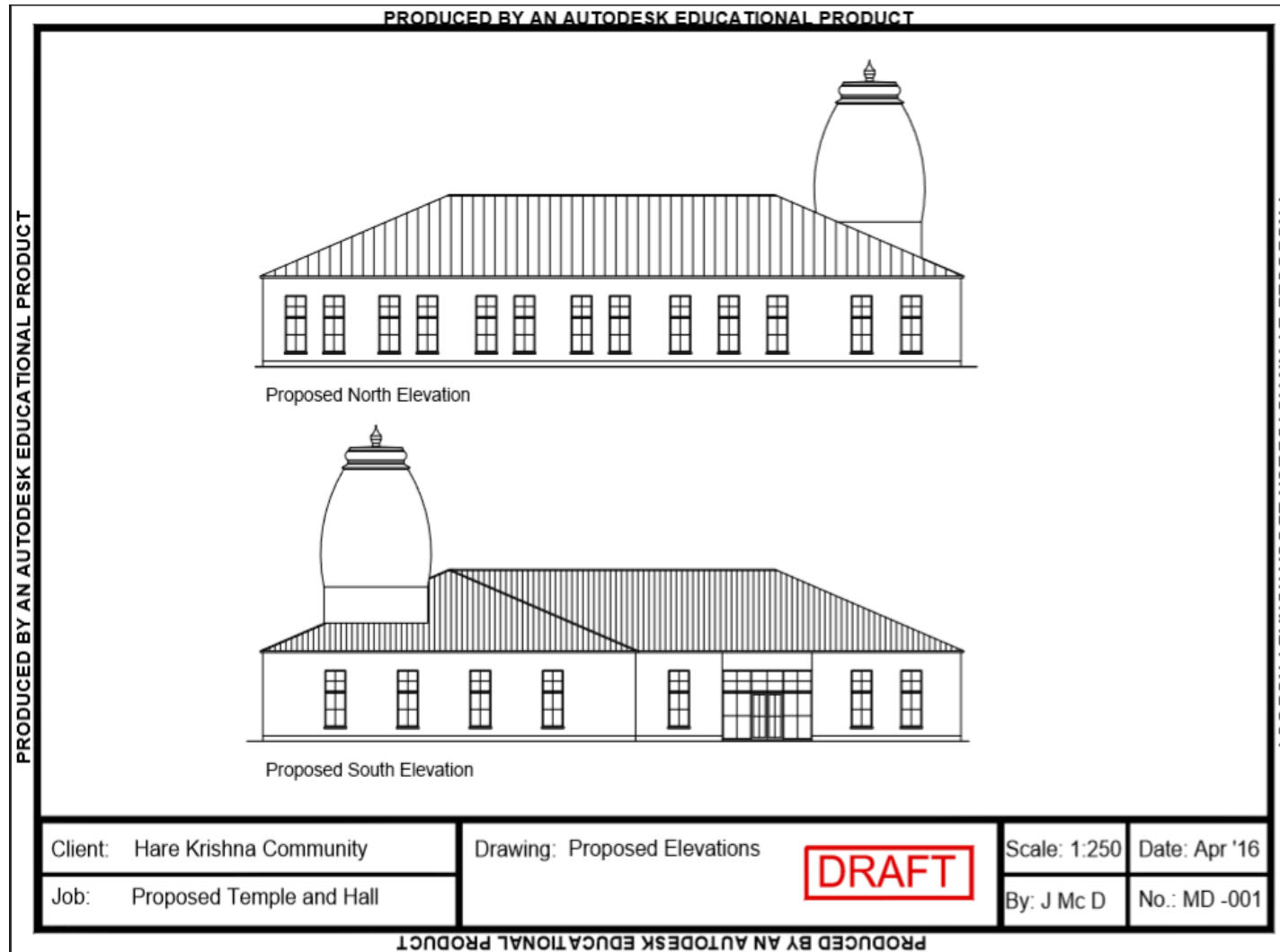
Aforementioned, our organisation community has also developed many farming communities throughout the world and the two nearest to us here in Dublin are in County Fermanagh and in Watford, just outside London. On these farms, we demonstrate self-sufficiency and agribusiness models, growing our own fruits and vegetables, grain production, supplying our own milk, keeping bees and living a lifestyle in harmony with nature which we are looking forward to replicate in Dublin.

See link to website:

- <http://ecovillage.org/en>
- http://www.bhaktivedantamanor.co.uk/home/?page_id=4073

2. ARCHITECTURAL DESIGN

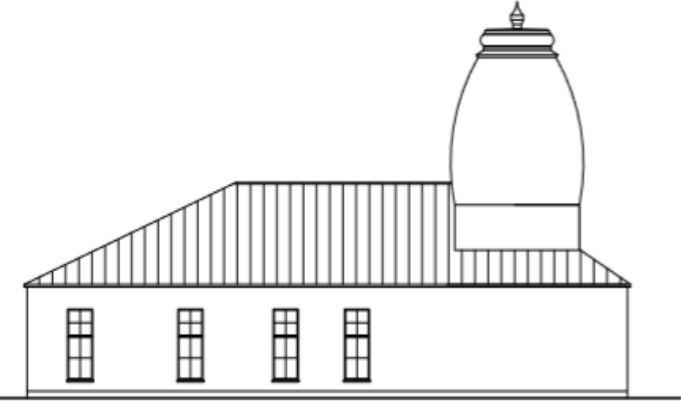
The following is a draft Temple design, which can be adapted to suit the location where the Temple is developed, taking into consideration Fingal County Council design directives.



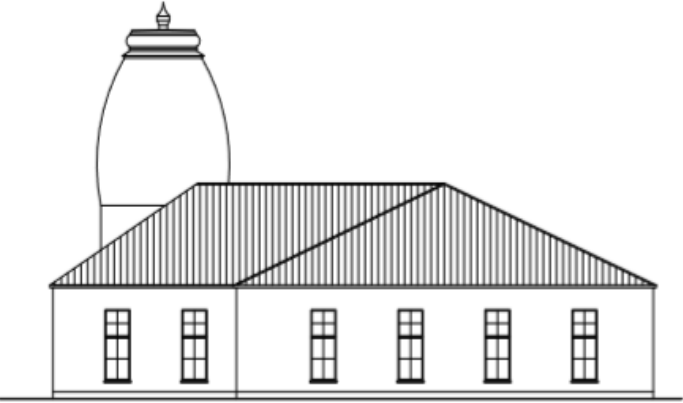
PRODUCED BY AN AUTODESK EDUCATIONAL PRODUCT

PRODUCED BY AN AUTODESK EDUCATIONAL PRODUCT

PRODUCED BY AN AUTODESK EDUCATIONAL PRODUCT



Proposed West Elevation



Proposed East Elevation

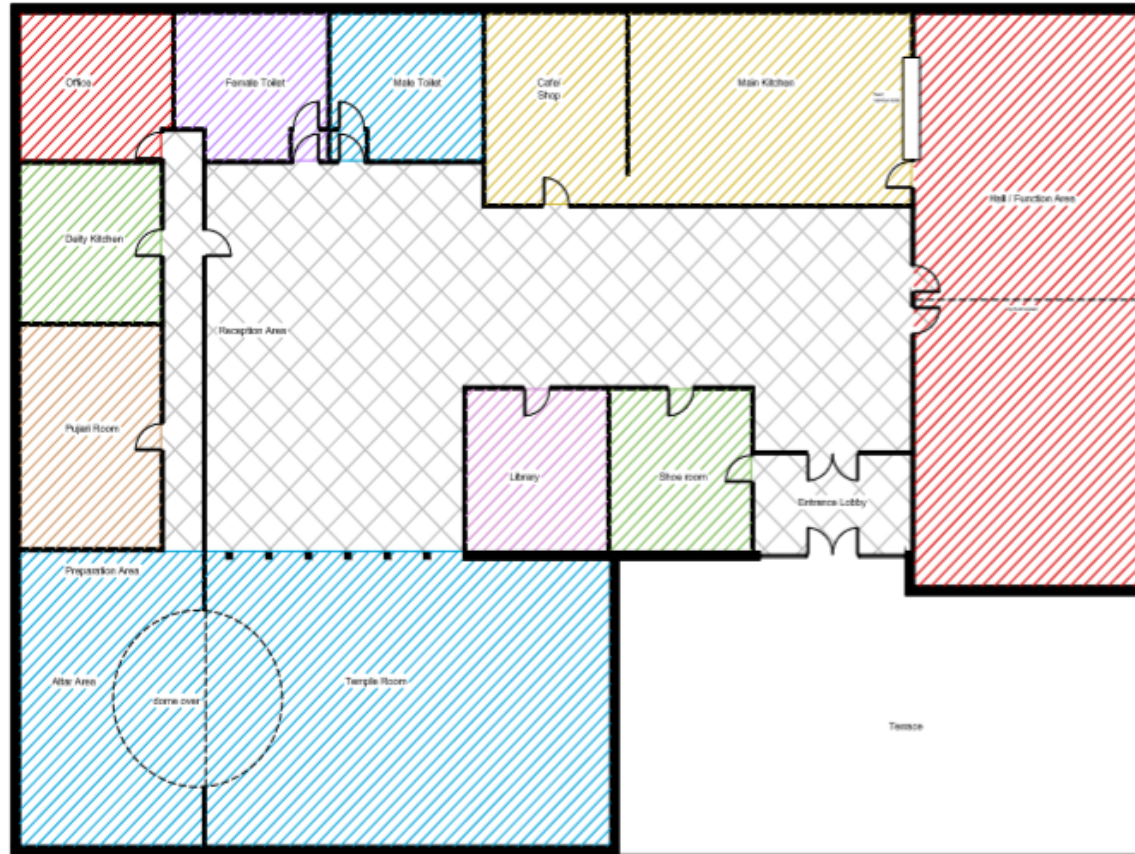
Client: Hare Krishna Community	Drawing: Proposed Elevations	<div style="border: 2px solid red; padding: 5px; display: inline-block; font-weight: bold; font-size: 1.2em;">DRAFT</div>	Scale: 1:250	Date: Apr '16
Job: Proposed Temple and Hall			By: J Mc D	No.: MD -001

PRODUCED BY AN AUTODESK EDUCATIONAL PRODUCT

PRODUCED BY AN AUTODESK EDUCATIONAL PRODUCT

PRODUCED BY AN AUTODESK EDUCATIONAL PRODUCT

PRODUCED BY AN AUTODESK EDUCATIONAL PRODUCT



Proposed Ground Floor Plan

Client: Hare Krishna Community	Drawing: Proposed Ground Floor Plan	Scale: 1:200	Date: Apr '16
Job: Proposed Temple and Hall		DRAFT	By: J Mc D
			No.: MD -001

PRODUCED BY AN AUTODESK EDUCATIONAL PRODUCT

3. OBSERVATIONS

In this section we will be focusing on the Fingal County Council Development Plan and how we meet the various criteria of their plan. ISKCON has always fitted well with government directives and we look forward to working with Fingal County Council in the same way. See pictures in Appendix D.

See below few links from our UK branches:

- Queen visits Krishna Avanti School UK
<http://www.bhaktivedantamanor.co.uk/home/?p=4979>
- ISKCON Leicester wins Heritage Lottery Fund support to restore stained glass windows
http://www.iskconleicester.org/latest-news-article.php?lat_id=36
- ISKCON leaders meet Indian PM Modi and UK PM David Cameron
<http://www.dandavats.com/?p=22174>

Two areas are of particular interest for us are Chapter 3-Placemaking and Chapter 5-Rural life. We have listed below sections from those 2 chapters which best describe the council objectives which also reflect our own.

3.1. CHAPTER 3 - PLACEMAKING

Having studied the Fingal development plan, we think the objectives mentioned below match our criteria.

- Ensure communities develop in a co-ordinated sustainable manner to create vibrant and viable places and ensure new development respects the existing character of existing centres.
- Continue to attract and retain quality jobs that are well-paying and environmentally friendly. Placemaking builds the necessary foundation upon which new enterprises can be developed and can grow, creating lasting, sustainable prosperity for local communities.
- Ensure adequate provision of accessible high quality open space and recreational facilities in the County.
- Promote adequate provision and distribution of community infrastructure in the County
- The provision of good community facilities and services, such as education, training, libraries, childcare facilities, places of worship, health and community centres, in appropriate accessible locations is important as they contribute positively to an enhanced quality of life.

-
-
- There has been an increase in the number of faith communities in the County over the last decade and this has given rise to a demand for worship spaces. While civic halls and community centres may provide opportunities for public worship, faith communities which have a significant number may require their own places of worship. Consideration may need to be given to appropriate locations for new facilities, given the potential for traffic and noise related issues if located in unsuitable areas.

3.2 CHAPTER 5 - RURAL FINGAL

- It also provides opportunities to harness the food, leisure, recreation and tourism sectors in a sustainable manner.
- The Council supports farming, horticulture and other rural based economic activity as important sources of income and sustainable economic diversification of a scale and nature appropriate to rural areas.
- Promote rural development and encourage the sustainable development of resources in agriculture, horticulture, agri-tourism, tourism, farm diversification, and renewable energy resources
- Ensure that new development is physically and visually integrated with and compliments the character of the rural landscape without undue negative impacts on the visual/scenic amenities
- A significant proportion of the report focuses on how to capitalise on the physical, human, cultural and social resources of rural areas. The primary task given to CEDRA was to identify strategic initiatives that will ensure rural areas contribute to sustained and sustainable national economic growth and development in the future.
- Collaboration between the tourism offering and local service providers, such as local shops, restaurants, cafes, farmer's markets, has the potential to significantly expand the economic impact on the rural areas of the County. Fingal County Council will encourage and support such collaboration within and between the Rural Villages and their hinterlands.
- Community services which allow residents to meet and interact on a social basis, and include churches, community and sports halls, libraries and pubs;

3.2.1. Agriculture

Agricultural activity in Fingal includes tillage of cereals and other crops, pasture and dairying and is an important part of the economic life of rural Fingal helping to sustain, enhance and maintain the rural economy. Agriculture will continue to be an important component of Fingal's rural economy. The agricultural sector must adapt to the challenges posed by modernisation, restructuring, market development and the increasing importance of environmental issues.

3.2.2. Horticulture

The development of a well-managed, sustainable horticulture sector which can capitalise on the proximity to the available markets in the Greater Dublin Area and beyond will be supported and facilitated.

- Support and facilitate the development of environmentally sustainable horticultural practices.

3.2.3. Agri food

"The growing trend of farmers markets for the sale of locally produced goods will be encouraged at appropriate locations. Such country markets can increase the commercial and social vitality of the area in which they are held." -

3.2.4. Rural tourism

"As a former manager of the ISKCON center in Northern Ireland, it is very clear to me that a self-sufficient project is of great interest even from a tourism point of view." - said Martin Davis. "Many people who came to our project in County Fermanagh were there solely to see the self-sufficiency aspect". Our goal is to run different courses promoting this.

3.3. TARGET AREAS

The areas we are most interested in developing our project we will present in order.

1. Lusk/Rush

The reason our preference is for Lusk/Rush is that it is sufficiently rural but also close to road rail and bus network from Dublin. In that way we could facilitate not only the large following we have in the Fingal area but also cater for our following in Dublin South specifically in the Lucan/Leixlip Adamstown area. We also have a following in Drogheda/Dundalk who would also be benefitted by our location there.

2. Balbriggan

Balbriggan would be our second choice because of its proximity to the main road and rail networks.

3. Fingal North & Fingal Central

Fingal North and Fingal Central are also of interest.

4. OBSERVATION SUMMARY

Ever Since Fingal County Council has asked for submissions for the Development Plan, we have been very enthusiastic at the prospect of being part of that vision. We feel we have a lot to offer not only to our constituency of members but also to the broad Fingal community in general. At a time when on the one hand there are a lot of interesting developments in the areas of self-sufficiency, sustainability, and environmental awareness, at the same time, there are major challenges in the areas of health, well-being, mental health, social inclusion and specific awareness and responsibility. Our commitment is to add to the quality of life being promoted in this exciting development plan via the principle of simple living and thus living and working in a sustainable way. . The benefits that flow from such a lifestyle have a very positive impact on those areas of health and social inclusion.

Our aim is to:

1. Provide a dynamic model of self sufficiency
2. To provide a place of worship for a growing Fingal constituency.
3. To provide a training center for sustainable living in the 21st century.
4. To provide a cultural center for the social needs of our growing community.
5. To provide healthy and nutritious food for our 2 restaurants in Dublin.

Our Main request is that when we buy a piece of land which is zoned rural or greenbelt, using it as a place of public worship is not excluded, hence we would need planning granted for the project. We would assume the horticultural and agricultural aspect of our proposal would be automatically included in this. Of course, we would work closely with the Council planners regarding choice of site, especially in the aspect of design, drainage and traffic impact. In fact, only this month, our temple in Watford received planning for a community building, together with relocation of their existing polytunnels and playground from Hertsmere Council. Through consultation and working within the Council's planning brief they achieved unanimous approval because the outcome resulted in a win-win for the Council, the community and residents alike.

We would need some residential quarters for our altar servers as a typical day contains seven different services beginning early and finishing at 9pm.

We feel that the inclusion of a project like this would be of immense benefit to the people of Fingal and it would increase the inclusive economic, sustainable, spiritual and social aspect of the Fingal area.

Whereas the community hall because of its nature could be opened to the outside community for hire for similar minded events, the temple aspect would be operated solely under the ISKCON direction.

- Temple in Watford given planning permission:

http://www.watfordobserver.co.uk/news/14450124.Bhaktivedanta_Manor_given_planning_permission/

5. APPENDICES

Appendix A. Rathayatra Parade in Dublin



Lord Mayor Oisín Quinn sweeps the streets of Dublin to open Rathayatra 2013



Lord Mayor in 2012



Gardaí assisting at Rathayatra 2015, Dublin



Lord Mayor and Indian Ambassador during the opening ceremony in 2015

Appendix B - Summer Festival Celebrated in 2015 in Dublin, Galway, Cork & Belfast



Cultural dance in Dublin during the summer festival 2015



The crowd in Dublin enjoying the ecstatic music.



The Summer Festival in Galway



The crowd singing and dancing in the Galway Festival.



Food Preparation during the Summer Festival in Belfast,



Food Distribution after the Summer Festival in Belfast, 2015.

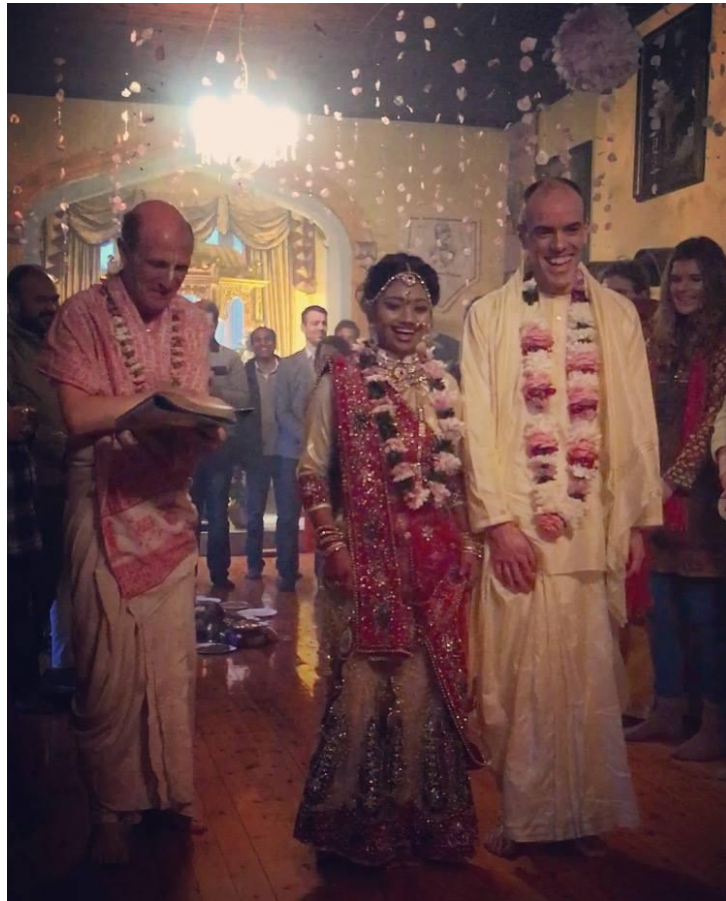


The crowd in Belfast for the Summer Festival



Food Distribution in Cork after the Summer Festival

Appendix C - Weddings



Latest Wedding in Northern Ireland, December 2015.

Appendix D- Government leaders visiting ISKCON



Queen visiting the Krishna Avanti School, UK in 2012



As the Queen arrived the children could barely contain their excitement



ISKCON leader meets UK PM David Cameron



ISKCON leader meets Indian PM Modi