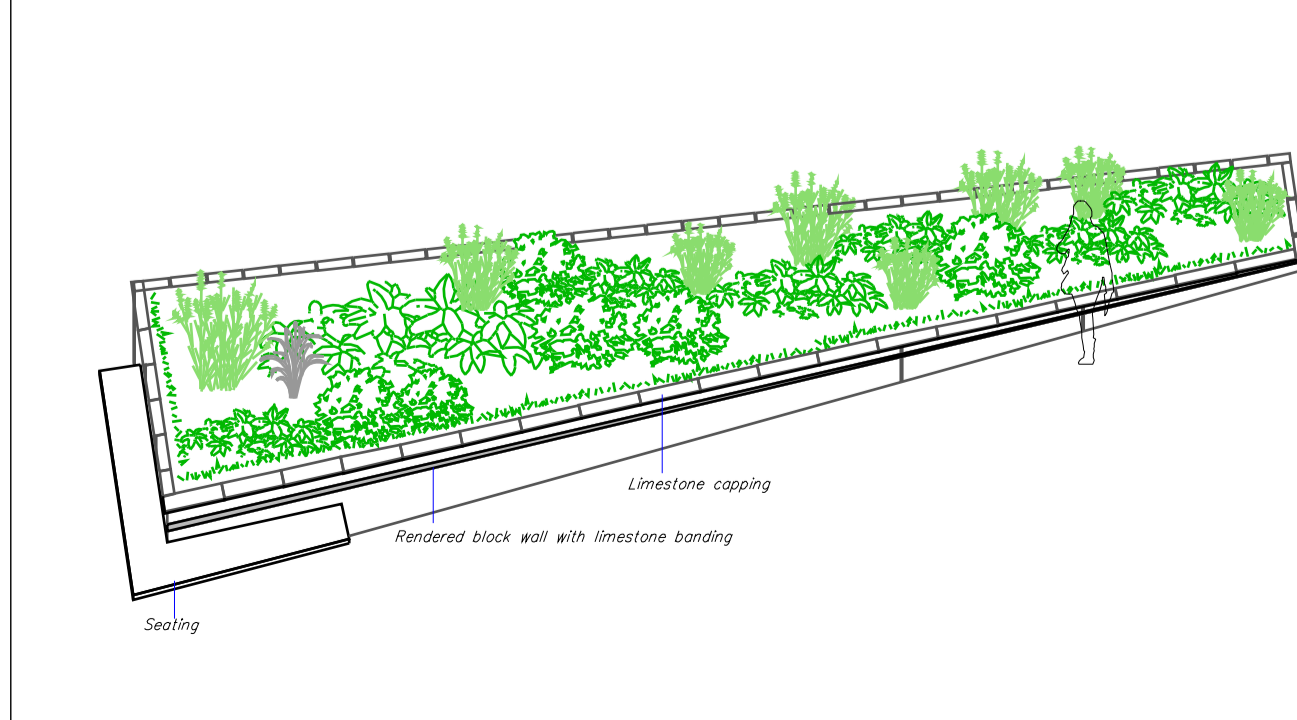


Legend

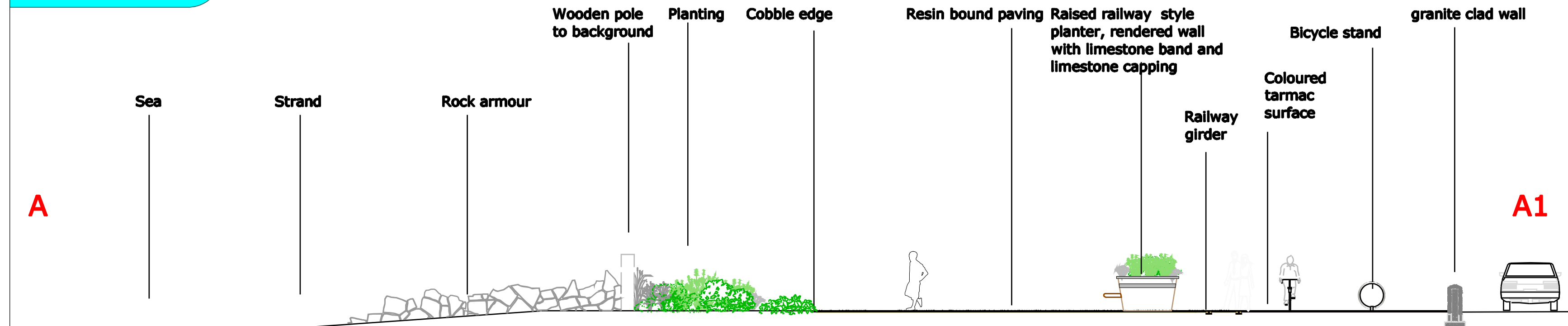
- Ornamental planting with perennials and shrubs using plants such as Hebe x franciscana 'Blue Gem', Cleome nummularifolia, Agapanthus orientalis, Artemisia arbuscula and Eryngium x olivaceum
- Native planting using plants such as Arenaria maritima, Centaurea erythraea and Tripleurospermum maritimum
- Maritime shrub planting using plants such as Calceolaria arbuscula, 'Apple Blossom', Hydrangea macrophylla and Spartium junceum
- Grass lawn
- Wild Grasses
- Coloured tarmac
- Resin bound paving, beige
- Double row of cobble setts
- Metal rail girder set into paving
- Raised planter with seating, planter is finished with a rendered block wall with limestone banding and limestone capping
- Wooden post of varying heights, min 1.3 to max 1.8m, 300x300mm square
- Bicycle stand, stainless steel brushed finish, 649 (h) x 795mm
- Poured concrete paving with etched signs
- Wall clad in granite rubble with round top, height 1.2m



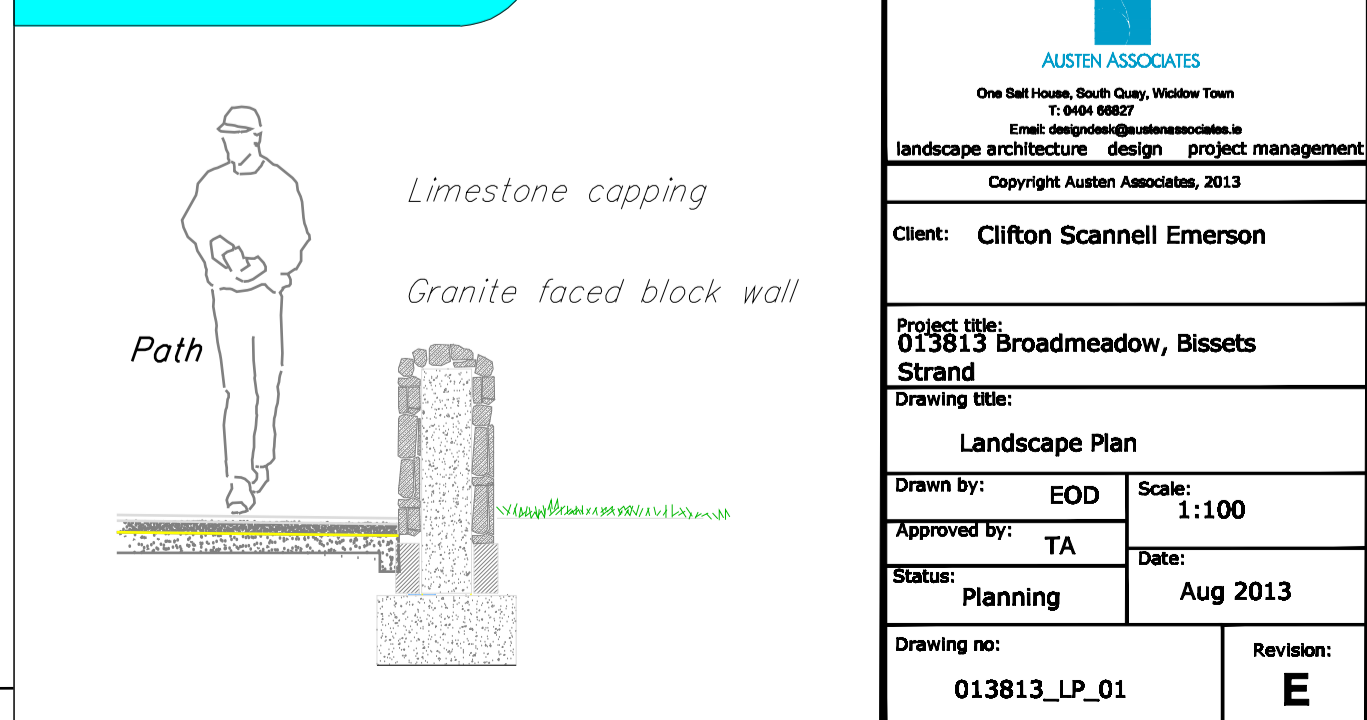
Planting Axonometric



Section A A1, 1:50



Detail_Round topped granite wall



Rev	Date	By	Details

AUSTIN ASSOCIATES
 One Bell House, South Quay, Whitehall Tower
 T: 0444 8827
 Email: design@austinassociates.co.uk
 landscape architecture design project management
 Copyright Austin Associates, 2013

Client: Clifton Scannell Emerson

Project title: 013813 Broadmeadow, Bissets Strand
 Drawing title: Landscape Plan
 Drawn by: EOD Scale: 1:100
 Approved by: TA Date: Aug 2013
 Status: Planning
 Drawing no: 013813_LP_01 Revision: E