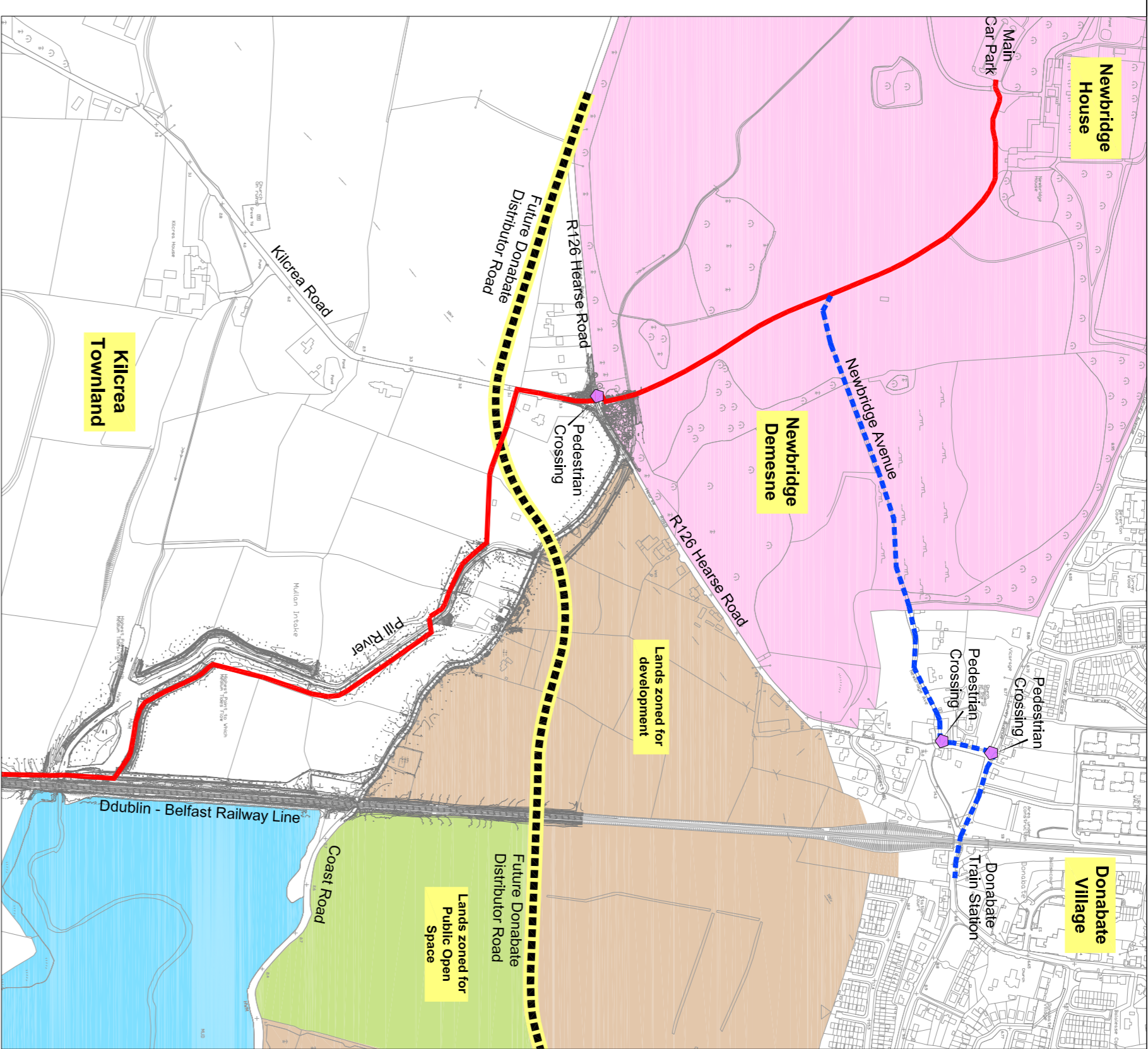




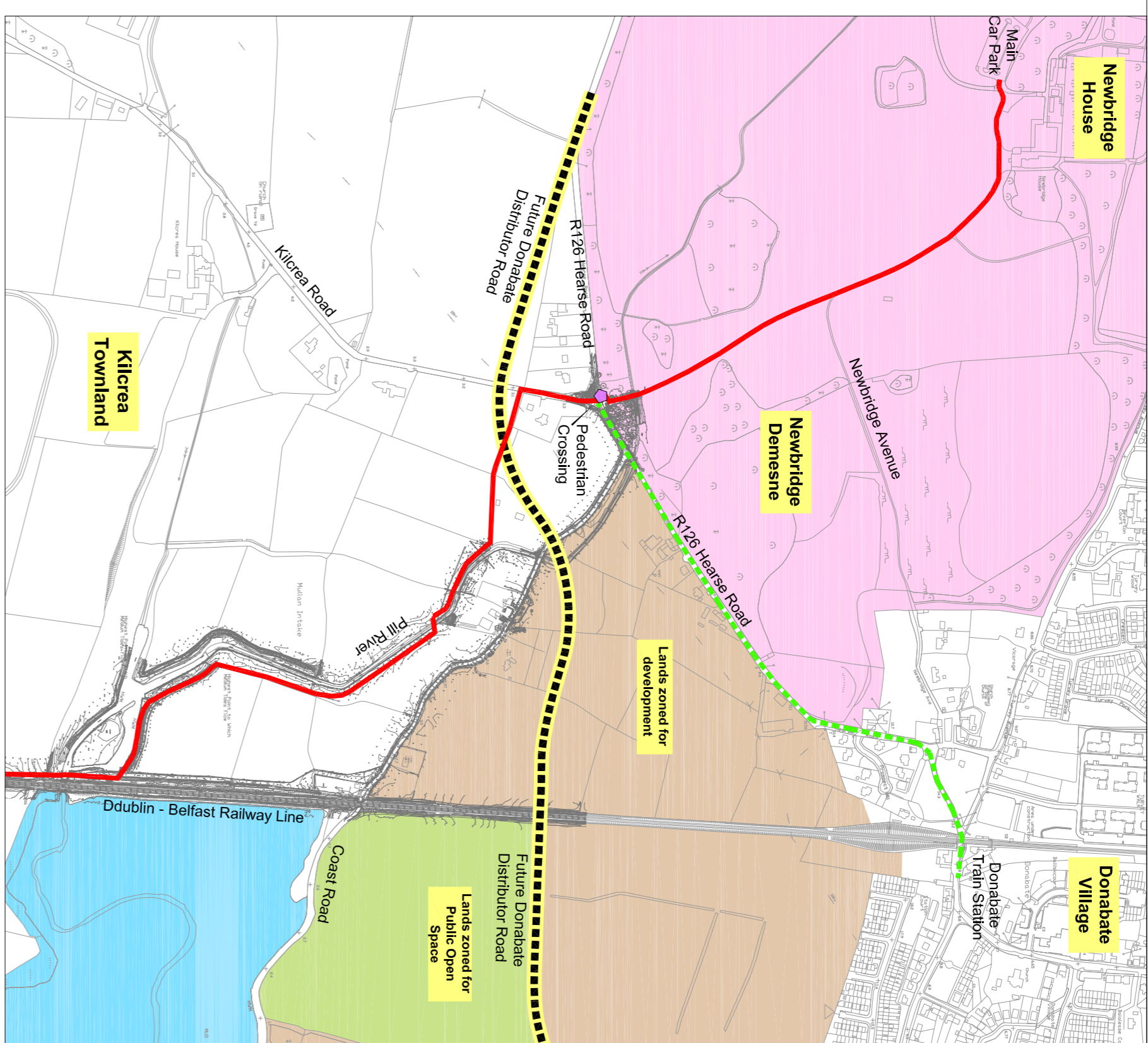
Broadmeadow Way

This drawing is produced using the
 Irish Transverse Mercator (ITM)
 Geographic Coordinate System

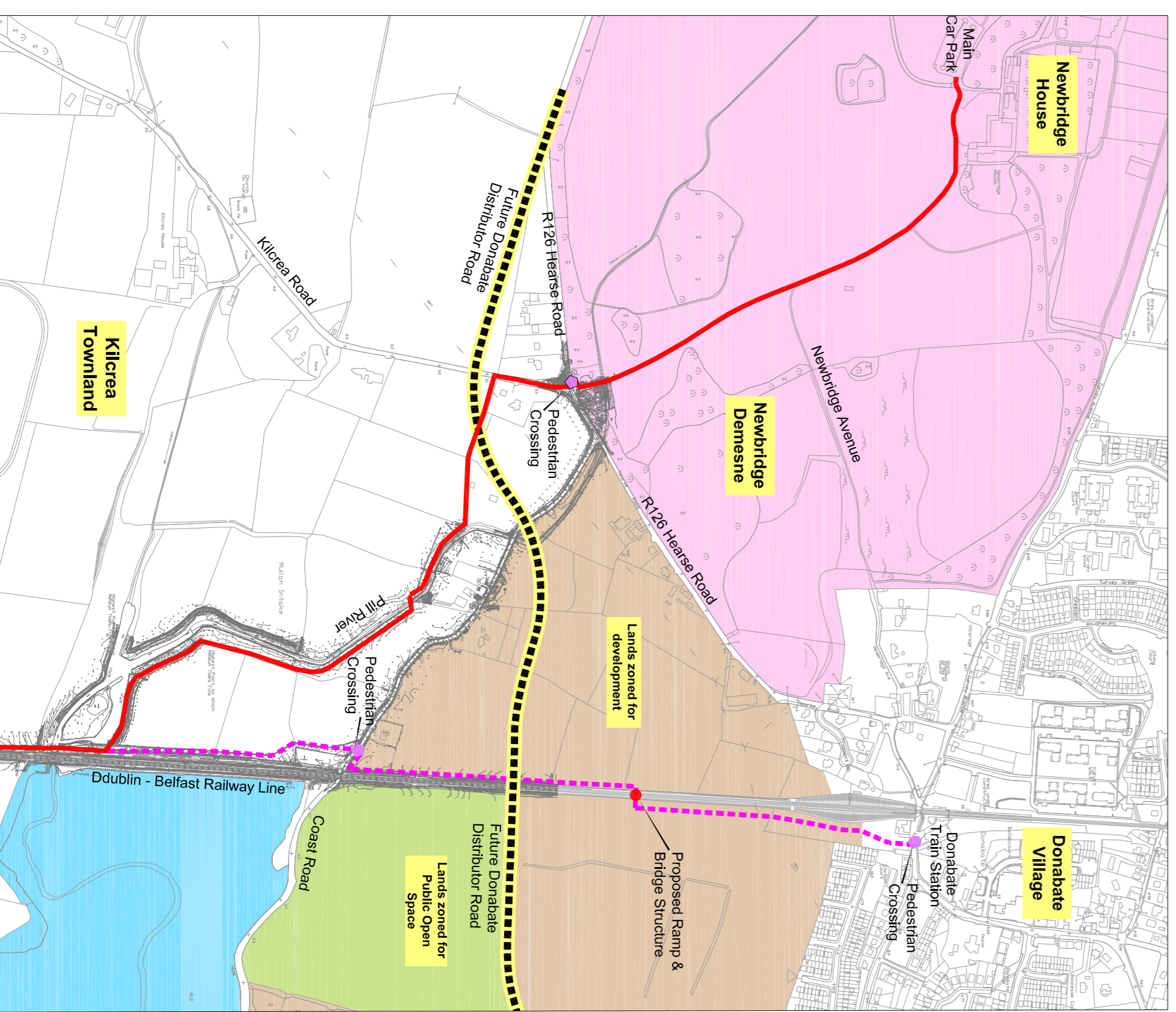
A1



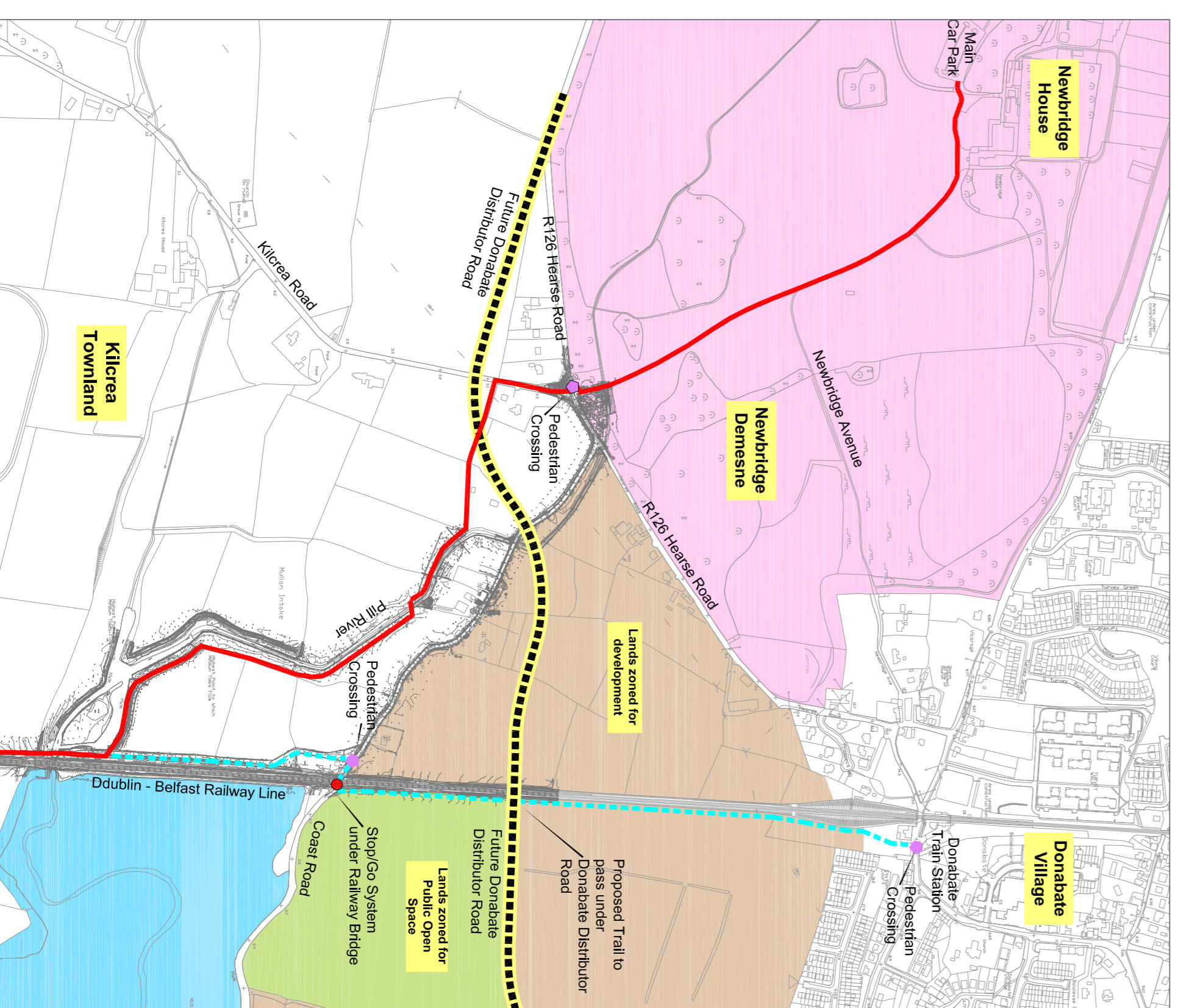
BRANCH 1



BRANCH 2



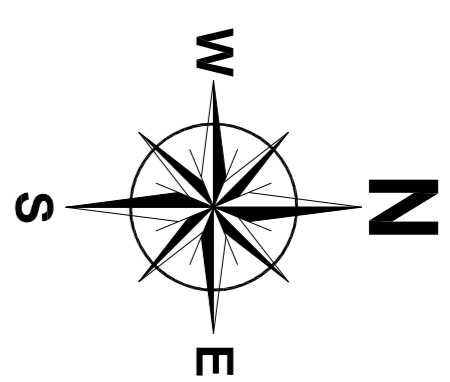
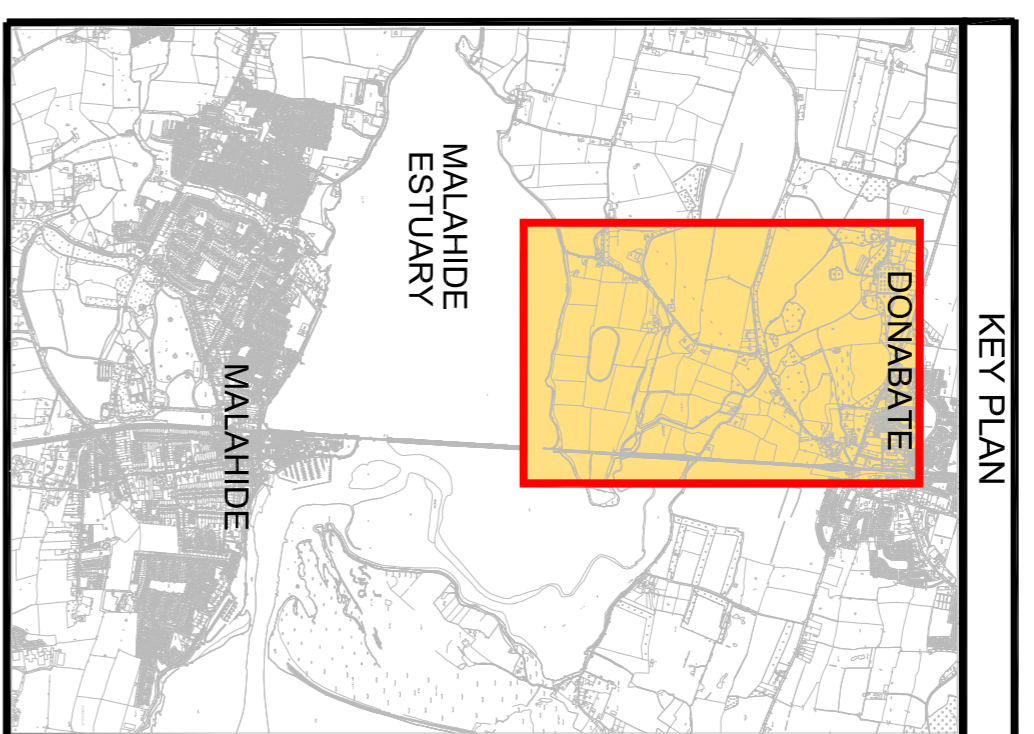
BRANCH 3



BRANCH 4

Legend:

- Emerging Preferred Route
- Branch No. 1
- Branch No. 2
- Branch No. 3
- Branch No. 4
- Proposed Crossings
- Local Constraints
- Future Donabate Distributor Road
- Malahide Estuary
- Local Amenities (Newbridge Demesne)
- Lands Zoned (For Development)
- Lands Zoned (For Public Open Space)



Client	Fingal County Council
Project	Broadmeadow Way
ROUTE OPTIONS POST PUBLIC CONSULTATION	
DONABATE BRANCH OPTIONS (INDIVIDUAL)	
Drawn By	NH
Checked by	NH
Date	May 2014
Scale	NTS @ A1
Dwg. Progress	
Dwg. No.	12_160_187-A

Clifton Scannell Emerson Associates

Report June 2014 CSEA

Revision	Description	Initials	Date

Clifton Scannell Emerson Associates Limited
 Scoil na Uí Eoghain,
 Castlehaven Avenue,
 Ballyrook, Co. Dublin,
 Ireland.
 T: +353 1 281 5006
 F: +353 1 281 3468
 E: info@cseai.com
 W: www.cseai.com