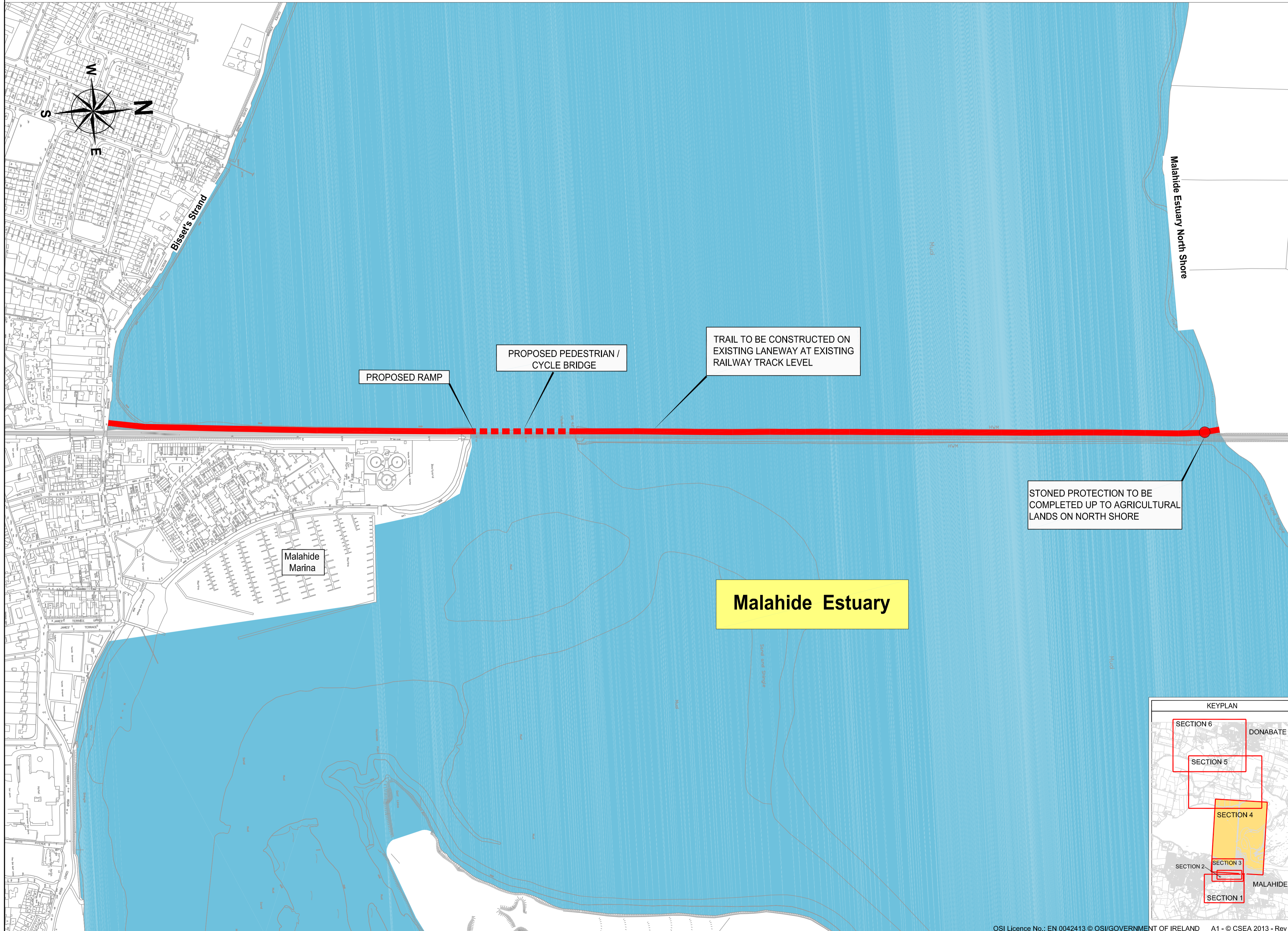


# Broadmeadow Way - Emerging Preferred Route - Section 4

## Bisset's Strand To North Shore Malahide Estuary



**Legend:**

- Section 3 Option 1
- Malahide Estuary

**Clifton Scannell Emerson Associates**  
Report 18/12/2013  
CSEA

Revision	Description	Initials	Date

**Clifton Scannell Emerson Associates**  
Clifton Scannell Emerson Associates Limited  
Consulting Engineers,  
Seafort Lodge,  
Castledawson Avenue,  
Blackrock, Co. Dublin,  
Ireland.  
T. +353 1 288 5006  
F. +353 1 283 3466  
E. info@csea.ie  
W. www.csea.ie

Client	Fingal County Council
Project	Broadmeadow Way
Dwg. Title	EMERGING PREFERRED ROUTE SECTION 4
Drawn By	NH Date DECEMBER 2013
Checked by	NH Scale NTS @ A1
Dwg. Progress	
Dwg. No.	12_160_158

